

Thursday, March 30, 2023 • Issue 115



Promoting
public interest
and participation
in the arts
since 1961



eSKETCHES

NEWS OF THE WEEK:

"Jazz Meets Classical" • Sunday, April 2, 4 pm.

A Truly Special Event!

**Mads Tolling (violin), Anna Maria Mendieta (harp),
Miles Graber (piano), Dave MacNab (guitar).**



Top: Anna Maria Mendieta. Bottom: Mads Tolling.

"Jazz Meets Classical"

Some Tickets still available for the April 2 Concert.

\$29 advance, \$5 more the day of.

**Available at Gualala Arts, the Dolphin Gallery,
and online at [EventBrite.com](https://www.EventBrite.com).**

MORE DETAILS

"Mr. Yakushev can do just about anything he wants."

The New York Times

**Come and experience this exceptional talent at Gualala
Arts' Coleman Hall. The April Chamber Music Concert**

is **SATURDAY Afternoon, April 8, 4 pm!**



Pianist and Composer Ilya Yakushev.

Tickets available now. \$40 advance, \$5 more the day of at Gualala Arts, Dolphin Gallery, and online at [EventBrite.com](https://www.EventBrite.com).

MORE DETAILS

The 2023 “Art in the Schools” exhibit continues in the Burnett Gallery & Elaine Jacob Foyer at Gualala Arts. Come and explore one of the coastal community’s favorite annual exhibits.



This exhibit puts beautiful, fun and highly creative art on display through April 9.

MORE DETAILS

**Final Weekend for "Suzanne Dunn: New Paintings",
Visit the Exhibit at the Dolphin Gallery thru Sunday.**



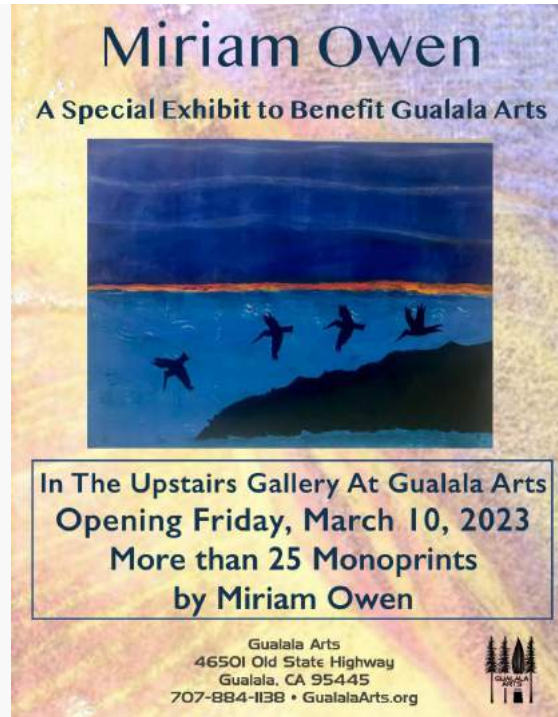
Art by Suzanne Dunn

What influences Suzanne Dunn? The idea of rural coastal

architecture juxtaposed by graphic suns,
moon shapes and high contrast compositions.
See Dunn's art in person at the Dolphin Gallery, through
Sunday, April 2. And do some gift-shopping as well.

[MORE DETAILS](#)

**"The Art of Miriam Owen. The Special Exhibit and
Fundraiser for Gualala Arts continues in the Upstairs
Gallery and the Upstairs Foyer.
All proceeds from the exhibit benefit Gualala Arts.**



**Take a walk upstairs at Gualala Arts and
look through the art donated by Miriam Owen.
All sales benefit Gualala Arts.**

[MORE DETAILS](#)

**LAST CALL FOR EXHIBITS FOR 2024.
Whether you're an artist or an art lover who'd like to curate
an exhibit—or both, contact Gualala Arts.
Explore "how" to create an exhibit [here](#).
Applications are due APRIL 1st.**



Be creative! Bring an exhibit to Gualala Arts in 2024.
Fill out the application, [Available Here](#).

[MORE DETAILS](#)

Mark Your Calendar!

Ilya Yakushev, Chamber Music Concert
At Gualala Arts, SATURDAY, April 8, 2023 at 4 pm.
Tickets at Gualala Arts, Dolphin Gallery, and [EventBrite.com](#)

Gualala Arts and Fred Adler Present
"Jazz Meets Classical", Sunday, April 2, 2023, 4 pm.
Tickets available at Gualala Arts, the Dolphin Gallery,
and [EventBrite.com](#).

"Encaustic Art: Exploring the Seen and the Unseen"

**The art of Larain Matheson
Opens April 8 at [the Dolphin Gallery](#).**

**"Lines & Faces" and "Wrapped in Ruins"
An Exhibit and a Performance, featuring Lucinda Weaver,
Alan Bern, Karl Young, Robert Woods. Opens April 14 at
[Burnett Gallery](#). Performance Tickets at [EventBrite.com](#).**

**Light and Dark: The Art of Doug Volz
A New Exhibit in Coleman Hall. Opens April 14.
Information at [GualalaArts.org](#)**

**"Hold On To Your Dreams:
Homage to the Legacy of Gil Scott-Heron
Exhibit features the art of Jeanie Dooha
Opens April 14 at [GualalaArts.org](#)**

**"Begin Free Motion Quilting"
A Workshop with Karen Bolan.
Thursday, April 20, 10 am to 4 pm. [Online registration](#).**

**Poetry For Everyone, Saturday, April 29.
The Annual Open Poetry Event at Gualala Arts
[More Information Here](#).**

**36th Annual Architectural Tour, Wine Tasting & Auction
A Favorite Summer Event Returns May 13.
[More Information Here](#).**

**12th Annual Auto Show June 3, 2023
A Favorite Summer Event Returns!
[More Information Here](#).**

**62nd Art In The Redwoods, August 17-20, 2023
Art and So Much More!
[More Information Here](#).**

Call To Artists!

**["Sculpture In The Gardens"](#) • A New Exhibit
April 2023 Exhibit. Download [Registration Form HERE](#).
Register now.**

**["High Off The Land"](#) • A New Exhibit
May 2023 Exhibit. [Registration Form HERE](#).
Registration due no later than March 24, 2023.**

**Exhibit Proposals for 2024.
The Deadline is April 1, 2023
Contact Gualala Arts with your proposal.**

**2023 Gualala Salon and Salon des Refusés
Call To Artists: Registration information here.
Registration Due no later than May 26, 2023**

**Art In The Redwoods_
This Year's Festival is August 17-20, 2023
Contact Gualala Arts to Register or get More Information.**

**Plein Air Affair.
Second Annual Paint Out begins August 26, 2023.
Contact Gualala Arts to Register or get More Information.**

Your Gualala Arts Center & Dolphin Gallery



photo credit: Scott Chieffo




Hygiene protocol is employed to keep all our guests safe including the following but not limited to:

- Gualala Arts is open every day.
- The Dolphin Gallery open Thursday thru Tuesday, 10am to 4 pm.
- **Masks are required for all indoor ticketed events .**
- **Masks are suggested but are optional** when entering the building.
- Gualala Arts Staff will be masked while inside of building during regular public hours 7 days a week 11-4 pm.
- Social distancing will be observed for all visitors
- Hand sanitizer & hand washing will be available for all guests.
- State of the art air purifiers in each room.
- Doors and windows open to allow for plenty of fresh air (dress warmly!).

- Hot touch points will be disinfected regularly.
- Touch-less payment systems.
- Curbside pick up available.

More Information is at GualalaArts.org

You make a difference!

		
Give	Join	Shop

Gualala Arts

(707) 884-1138 voice

(707) 884-3038 fax



Gualala Arts | 46501 Old State Highway, PO Box 244, Gualala, CA 95445

[Unsubscribe \[pr@gualalaarts.org\]\(mailto:unsubscribe_pr@gualalaarts.org\)](mailto:unsubscribe_pr@gualalaarts.org)

[Update Profile](#) | [Constant Contact Data Notice](#)

Sent by pr@gualalaarts.org powered by



Try email marketing for free today!