



Promoting
public interest
and participation
in the arts
since 1961



eSKETCHES

NEWS OF THE WEEK:

Today is the day!
Celebrate Halloween: Wednesday, October 27!

It's a fun time on the coast, and
Gualala Arts is once again inviting you to join the fun.
The Drive-Thru Trick or Treat is 3:30 to 5:30 pm.

Come see the Pumpkins!

- Wear Your Costume or Come See Others in Theirs!
- See the Halloween Decorating Competition!



Join us for a

2nd Annual Drive Thru Trick or Treat

at the Gualala Arts Center
46501 Old State Hwy, Gualala CA

October 27th from 3:30-5:30pm

This year we've made it a competition with Cash Prizes!

Scan this QR Code for information about participating in our Pumpkin Decorating Competition, Grounds Decorating Competition & Costume Competition



Have Questions? Call Kendra at 707.884.1138 or
email info@GualalaArts.org



Drive-thru Wednesday, October 27, 3:30 to 5:30 pm
on the grounds of Gualala Arts

MORE DETAILS

Grammy Winning Guitarist Jason Vieaux
An afternoon Concert at Gualala Arts
Performing Music of Spain, Latin America,
J. S. Bach, Pat Metheny



Image: Jason Vieaux (photo by Tyler Boye)

Wednesday, November 17, 2 pm. At Jami Amphitheater.
Tickets \$25, Available at Gualala Arts,
Dolphin Gallery, and [EventBrite.Com](https://www.EventBrite.com)

MORE DETAILS

"Flying Free" from
Pacific Piecemakers Quilt Guild.
Current Exhibit at Gualala Arts.



Image: "Scrapy String Star Quilt" by Jan Carter

In the Burnett Gallery and Elaine Jacob Foyer.
Open Daily from 11 am to 4 pm. Admission is free.

[MORE DETAILS](#)

**Current Exhibits at The Dolphin Gallery
Featuring the works of
Paula Haymond, "Area 52", and
Chris Grassano, "North Coast Live"**



Images: "Inhabitant of Area 52" by Paula Haymond (left), "Chickens" by Chris Grassano (right).

**The Dolphin Gallery in Cypress Village is open
Thursday thru Monday, 11 am to 4 pm. Admission is Free.**

[MORE DETAILS](#)

**"River Wild" from the
Pointless Sisters Art Quilt Group of Sonoma County.
Current Exhibit at Gualala Arts.**

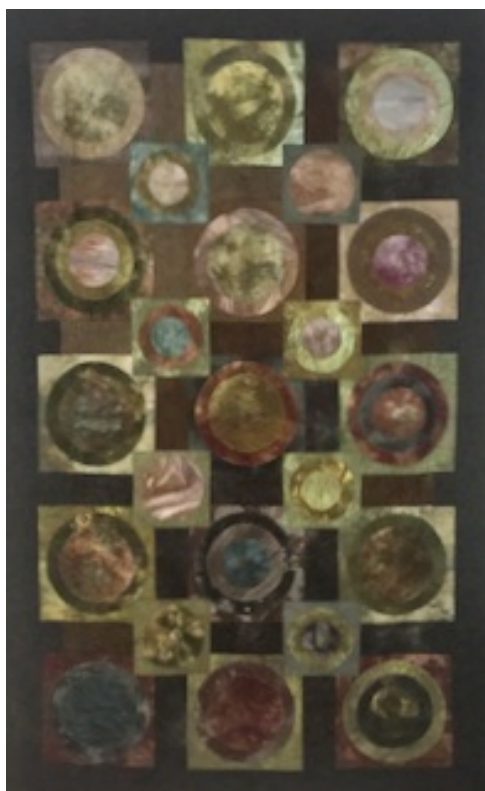


Image: "Soft Moments in Black Point Barn" by Gerrie Mann Peterson

**In Coleman Hall
Open Daily from 11 am to 4 pm. Admission is Free.**

MORE DETAILS

Winter Wonderland Returns to Gualala Arts.



**Winter Wonderland
begins Thanksgiving Week at Gualala Arts.
Open Daily from 11 am to 4 pm. Admission is Free.**

MORE DETAILS

Dates To Remember!

Winter Wonderland

Friday, November 26 thru December 31, 2021

Winter Wonderland returns to Gualala Arts Thanksgiving Weekend, and will continue through New Years. Open every day thru December 31 with a large selection of trees, gifts and treats. Everyone will get into the Holiday Spirit.

Your Gualala Arts Center & Dolphin Gallery



photo credit: Scott Chieffo

Gualala Arts Center, Open Daily from 11 - 4

Dolphin Gallery, Open Thu. - Mon. 11 - 4

Hygiene protocol is employed to keep all our guests safe including the following but not limited to:

- Masks are required to be worn by all visitors when entering property and building.
- Masks are REQUIRED FOR EVERYONE INDOORS AND OUTDOORS until further notice.
- Masks are required by all for outdoor events unless actively eating or drinking.
- Gualala Arts Staff will be masked while inside of building during regular public hours 7 days a week 11-4 pm.
- Social distancing will be observed for all visitors: 6-feet outside, 12-feet inside.
- Hand sanitizer & hand washing will be available for all guests.
- State of the art air purifiers in each room.
- Doors and windows open to allow for plenty of fresh air (dress warmly!).
- Hot touch points will be disinfected regularly.
- Touch-less payment systems.
- Curbside pick up available.

More Information is at GualalaArts.org

You make a difference!



[Give](#)

[Join](#)

[Shop](#)

Gualala Arts

(707) 884-1138 voice

(707) 884-3038 fax

