



Promoting
public interest
and participation
in the arts
since 1961



eSKETCHES

NEWS OF THE WEEK:

**"MusicaLiving" • A Live Concert Featuring The Open Air,
Outdoors at the JAMI Amphitheater at Gualala Arts,
Saturday, October 2, 4 pm**



**The Open Air is Chris Doering, Tim Mueller,
Karl Young, Gabriel Yañez. \$20 adults, \$15 youth.
Advance Tickets at Gualala Arts and Dolphin Gallery.**

[MORE DETAILS](#)

**The Final Weekend for "Paint, Fiber, Glass"
An Exhibit at Gualala Arts
Featuring the works of Thomas Burgard,
Nancy Kennedy, Kathryn Weiss.**



Continues through Sunday, September 26.
At Gualala Arts, open 11 am to 4 pm.

[MORE DETAILS](#)

Update Letter from Gualala Arts' Executive Director David 'Sus' Susalla



"Plan, adjust, see what the day brings, try to get some rest, adjust again!"

The following is an update of our current situation as of today, September 22, 2021.

It has been a roller coaster of a summer, and it is incredible to think it is already over today. We are preparing for fall and continue to lead with Love, gratitude and cautious optimism while we plan our mission to promote public interest and participation in the arts.

- **“Safety First” continues to be the common theme for keeping the Arts Center doors open! Masks are required for ALL visitors and volunteers inside and outside during events** at the Gualala Arts Center and Dolphin Gallery unless actively eating or drinking for EVERYONE. You can walk the grounds unmasked in a family pod during non-event days if distancing 6-12 feet is possible from others, but masking is always safer and preferred.

[Download the entire letter here.](#)

MORE DETAILS

**"Baskets & Gourds: Anything Goes"
Bay Area Basket Makers
Exhibit continues at Dolphin Gallery
Open Thursday thru Monday, 11 am to 4 pm**



**"Baskets & Gourds: Anything Goes", Art and function
by the Bay Area Basket Makers**
The Exhibit Continues through October 3 at the Dolphin Gallery.

MORE DETAILS

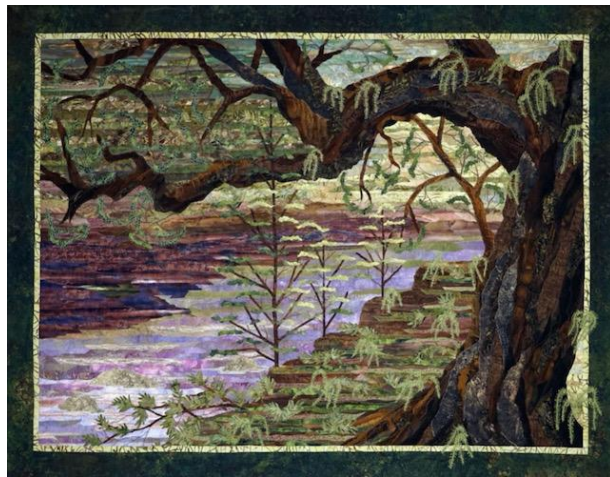
**"Flying Free" from
Pacific Piecemakers Quilt Guild.
A New Exhibit at Gualala Arts.**



Opening is Saturday, October 2, 11 am to 7 pm.

[MORE DETAILS](#)

**"River Wild". A New Exhibit from the
Pointless Sisters Art Quilt Group of Sonoma County.**



Opening is Saturday, October 2, 11 am to 7 pm.
Meet the artists from 2 pm to 4 pm.

[MORE DETAILS](#)

Dates To Remember!

**"North Coast Live" and "Area 52"-
A New Exhibit At The Dolphin Gallery
Opens Saturday, October 9, 11 am to 7 pm**

The exhibit includes local environmental art of birds and animals native to the Mendonoma Coast by Chris Grassano, and wood carvings by Paula Haymond.

Chamber Music Concert Featuring Trio Celeste

Outdoors at JAMI Amphitheater

Sunday, October 10, 2 pm Tickets are \$25.

Winter Wonderland

Friday, November 26 thru December 31, 2021

Winter Wonderland returns to Gualala Arts Thanksgiving Weekend, and will continue through New Years. Open every day thru December 31 with a large selection of trees, gifts and treats. Everyone will get into the Holiday Spirit.

Your Gualala Arts Center & Dolphin Gallery



photo credit: Scott Chieffo

Gualala Arts Center, Open Daily from 11 - 4

Dolphin Gallery, Open Thu. - Mon. 11 - 4

Hygiene protocol is employed to keep all our guests safe including the following but not limited to:

- Masks are required to be worn by all unvaccinated visitors when entering property and building.
- Masks are REQUIRED FOR EVERYONE INDOORS until further notice.
- Masks are required by all for outdoor events unless actively eating or drinking.
- Gualala Arts Staff will be masked while inside of building during regular public hours 7 days a week 11-4 pm.
- Social distancing will be observed for all visitors: 6-feet outside, 12-feet inside.
- Hand sanitizer & hand washing will be available for all guests.
- State of the art air purifiers in each room.
- Doors and windows open to allow for plenty of fresh air (dress warmly!).
- Hot touch points will be disinfected regularly.
- Touch-less payment systems.
- Curbside pick up available.

More Information is at GualalaArts.org

You make a difference!



[Give](#)

[Join](#)

[Shop](#)

Gualala Arts

(707) 884-1138 voice

(707) 884-3038 fax

