

Gualala Arts • October 2020

# SKETCHES

Exhibitions • Events • Workshops • Classes • And More



- “TEXTILES, DRAWINGS AND CLAY”  
JENNIE HENDERSON - MICHAEL HENDERSON
- “MY VALUABLES” WHAT REALLY MATTERS?  
HOLLY STIEL, PEG VIDETTA, BILL APTON, JANA STANFIELD  
PLUS BRIAN HOLDERMAN’S NEW ART
- DOLPHIN GALLERY & GIFT SHOP: PAINTINGS, PRINTS,  
SCULPTURES, WOODWORK, TEXTILES, JEWELRY & SEES CANDIES.

## Contents

Table of Contents, General Info.....	2
Executive Director's Message.....	3
Special Update Announcement.....	4
Dolphin Gallery Opening Exhibit.....	5
Burnett Gallery Opening Exhibit.....	6
Elaine Jacob Foyer Opening Exhibit.....	7
Take A Treasure.....	8
Winter Wonderland.....	9-10
Workshops.....	11
Pumpkin Time.....	11
Christmas Tree Decorating Contest.....	12
Winter Wonderland.....	13



OCTOBER 2020

**Gualala Arts, Inc.**  
4650I Old State Highway  
PO Box 244  
Gualala, CA 95445  
707-884-II38  
GualalaArts.org  
info@GualalaArts.org

**Arts Center Hours:**  
Mon. - Sun. 11 am to 4 pm.

**Sculpture Garden:**  
Mon. - Sun. 11 am to 4 pm.

**The New Dolphin Gallery  
& Gift Shop.**  
39114 Ocean Drive (Cypress Village)  
Gualala, CA 95445  
707-884-3896

**Dolphin Hours**  
Thursday-Monday, 11 am to 4 pm  
(Closed Tuesday and Wednesday)

**Executive Director**  
David "Sus" Susalla

**Gualala Arts Board Members**  
Barry Weiss, President  
Andrea Allen, 1st Vice President  
Eric Wilder, 2nd Vice President  
Bob Mitchell, Treasurer  
Andrea A. Lunsford, Co-Secretary  
Sheralyn Kirby, Co-Secretary  
Mary Eberhard, Jon Handel,  
Paula Haymond, Kelley Kieve,  
Dansie Little, Karen Tracy, Joan Wood

Printed on 30% recycled paper.  
© 2020 Gualala Arts, Inc.

Editor: Gualala Arts Staff  
Publicity and Art Direction: David Steffen  
Mailing Staff: Violet Arana, JoAnn Aiken,  
Trudy Armer, Dick Balch, Pat Chaban, Penny  
Dreyer, Linda Eastman, Marcie Johnston,  
Andrea A. Lunsford, Rhonda Rhumrey,  
Karen Tracy, Harriet Wright

**Promoting public interest  
and participation in  
the arts since 1961**

## Let's Do This Together!



These are difficult times for all of us.  
Please do what you can to support the  
ongoing mission of Gualala Arts.

We all make a difference. Donate at  
**GualalaArts.Org**



## EXECUTIVE DIRECTOR'S MESSAGE

Yahoo! Re-opening the Arts Center!

I am really looking forward to reopening the doors to the arts center again to the public & volunteers! How I miss sharing the arts. I miss welcoming artists carrying art they worked so hard on to display in our galleries, working with volunteers: hanging exhibits, creating delicious food in the kitchen, setting up events, etc... I miss the sound checks, the excitement of pre-show gatherings, the lights dimming, curtain opening and "Welcome to the fabulous Gualala Arts Center!" greeting from the stage.

With that said...oh man am I worried about reopening the center!

I really feel like the community is our family, and my family's safety is my #1 concern.



*Volunteer Flower in JAMI Amphitheater*

We are setting up all the possible precautions: limiting the number of people allowed inside, hand sanitizers, proper face mask required, lots of doors open letting the pacific breezes in to clean the air, air purifiers for rooms with fewer breezes, lots of room for physical distancing (6 feet), staff rotating shifts so only one person in the office when possible, logging in volunteers and staff with temp checks, no food or drinks allowed to be consumed. Buying and experiencing art will happen inside, and the much missed socializing will be encouraged outside.

Also, as we socialize at our wonderful Arts Center and Dolphin please remember one of my personal requests for guests, staff and volunteers (especially this time of year): let's try to refrain from local, regional or national conversations about political debates on issues while experiencing the art. There is enough time for that while not at the Arts Center & Dolphin to talk about those issues. If the conversation must happen...please take it outside away from others. For over 50 years, we have kept our spaces neutral and focused on art....not politics or debates on such

issues unless it is in the art we are talking about.

Back to the pandemic stuff....

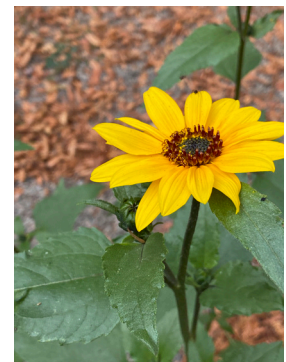
This darn thing is driving me nuts!!! I am trying to create a safe environment for everyone...your safety is the #1 concern that keeps me up at night! We start with opening the galleries for retail sales and will start adding other programs as allowed by county and state regulations.

I am feeling a bit out of control of it all. Please be safe at the Arts Center and in all of your interactions with others. I care about each and every one of you.

Doing my best to carry out our mission, leading with love, realistic cautious optimism and now most importantly SAFETY!

A handwritten signature in black ink, appearing to read "Sus" with a stylized flourish.

David "Sus" Susalla  
Executive Director  
Gualala Arts



*A Sign Of Hope*



## GUALALA ARTS CENTER| **SPECIAL ANNOUNCEMENT**

The following is an update of our current situation as of today, September 30, 2020.

- **GREAT NEWS! We have a plan to open the Gualala Arts Center doors** for retail sales through our gallery spaces starting Friday, October 2. The goal at the moment is to reopen to the public 7 days a week from 11 am to 4 pm. The Global Harmony Sculpture Gardens will be open 7 days a week as well.
- **Burnett Gallery will re-open with “My Valuables” What Really Matters?** Gualala Arts is thrilled to re-open with this new, personal and interactive exhibit curated by Holly Stiel including artists: Holly Stiel, Bill Apton, Jana Stanfield and Peg Videtta. Visitors are encouraged to bring their own memories to share during this exhibit. Sharing is simple. Bring an image and a description or short personal story on a half-sheet of paper or (preferably) on a 5"x7" card. Holly will post new offerings throughout the month in our Jacob Foyer as the exhibit grows with the community's contributions.
- **Festival of Trees is being re-imagined into a “Winter Wonderland”** for a fun, family friendly, safe shopping experience that will be open for 4 weeks instead of 2 days! The ever-popular tree decorating competition and silent auction is on with cash prizes, your favorite artists are being invited to set up booths with their arts and crafts offerings sans artists, Mrs. Claus is firing up the oven for handmade candy and cookies for purchase, decadent raffle baskets are being created and lots of varieties of trees are being brought in for you to purchase and decorate your home for the holidays.
- **The current plan for 2021 is to have exhibits up for 2-month periods at the Dolphin and Burnett & Jacob Foyer Galleries at the Gualala Arts center.** Openings will alternate months so that every month there will be an opening day on the second Saturday of the month from 11 am to 7 pm. Then gallery hours will go back to 11 am to 4 pm. The current plan for our large group exhibits is to be a version of our successful Online! Exhibits and will remain up for 3 months for COVID-19 safety and county and state guidelines
- **WE LOVE OUR NEW DOLPHIN HOME in Cypress Village.** We are creating a new process for new and returning artists to apply to show their work at this wonderful new space. A jury of five will review applications quarterly for inclusion. A refreshing look will happen quarterly or more frequently.
- **Keep and eye out for our annual fundraising letter.** We will send out our annual yearend fundraising letter a month early this year in October. We had a very successful Art in the Redwoods in August under the circumstances, but with that said, your yearend contributions are needed more this year than in previous years due to the pandemic. We are in the process of budgeting 2021 and at this point we are not planning any indoor in person workshops, classes, fundraisers, rentals, concerts, etc...we hope to keep our galleries open for retail sales and utilize our grounds (if allowed) for outdoors concerts or small gatherings, but time will tell. **Please remember us with your yearend contributions. YOU MAKE A DIFFERENCE!**
- **Workshops Online! are being planned for 2021.** The Memorial Mezzanine Classroom is being converted to a digital classroom for our artist instructors. The plan is to create an interactive environment where teachers and students can focus on what is important. Teaching and connecting with the students rather than just presenting digital demonstrations is our goal in bringing that spirit of exchange into the mix.

These are uncertain times for all of us to say the least. The board and finance committees are making prudent decisions with our Gualala Arts assets. **If you find that you are in a position to help our revenue stream loss, it would be greatly appreciated.** We are looking to continue our mission – to promote public interest & participation in the arts since 1961 – well into the future.

**WE make a difference with our choices.**

## **“Textiles, Drawings and Clay”** **Jennie Henderson and Mike Henderson** **Opening October 3, 2020**

The Dolphin Gallery and Gift Shop presents two artists and longtime residents, Mike and Jennie Henderson. The exhibit, “Textiles, Drawing and Clay”, opens Saturday, October 3, from 11 am to 7 pm at the new Dolphin Gallery in Cypress Village, Gualala. The show continues to Nov. 30.



Local residents since 1977, Mike Henderson (drawings and clay) and Jennie Henderson (textiles) will be showing a wide sampling of the art they have created in their three-studio home in Point Arena. While this will be Jennie’s fourth Dolphin exhibit, it will be their second Dolphin showing together since 2014.

In their upcoming October/November show, Jennie will feature a breadth of textile arts including hand-spun, hand-woven rugs and throws along with ice-dyed napkin sets, dishtowels, and silk scarves. And for the first time, she will be showing large, “transparent weave” pieces.

Michael will be showing several new works from his drawing studio that combine abstraction and realism in a developing “Sticks and Stones” series, along with a few of his favorites, and a few oldies from his collection that have never been shown. There will be pottery pieces as well, both black-fired and pit-fired ceramics in several sizes.



Many area artists missed the annual Studio Discovery Tour, which invites visitors into the artists’ studios and homes. Mike Henderson added “Since we truly missed our Studio Discovery Tour loyal visitors, Jennie and I hope that they will visit the Dolphin Gallery exhibit and see ‘the real stuff.’”

The Dolphin Gallery is at 39114 Ocean Drive, Cypress Village, Gualala. Open Thursday through Monday, 11 am to 4 pm. Information is at 707-884-3896 and at [GualalaArts.org/dolphin-gallery](http://GualalaArts.org/dolphin-gallery).

**At the  
Dolphin Gallery  
and Gift Shop.**

Opening  
Saturday, October 3,  
11 am to 7 pm  
The exhibit continues  
through November 30.

Dolphin Gallery & Gift Shop  
39114 Ocean Drive  
Cypress Village  
Gualala, CA 95445.  
Open Thursday-Monday  
11 am to 4 pm  
(Closed Tues. & Wed.)



**Information**  
[GualalaArts.org](http://GualalaArts.org)

707-884-1138  
46501 Old State Hwy  
Gualala, CA 95445  
707-884-1138

## **“My Valuables” - What Really Matters**

**A New Exhibit Curated by Holly Stiel with Peg Videtta, Bill Apton,  
Jana Stanfield, Patrick Sumner, Sheila Davies Sumner**

**At Gualala Arts  
Burnett Gallery**

Opening  
Friday, October 2,  
11 am to 7 pm  
The exhibit continues  
through Sunday,  
November 10.  
Open daily 11 am to 4 pm.

Scheduled to open in the Elaine Jacob Foyer and Burnett Gallery at Gualala Arts Center, “My Valuables—What Really Matters?” is a new, personal and interactive exhibit curated by Holly Stiel. The show, opening Friday, October 2, 2020, will combine a variety of art forms and take visitors on an inspiring journey through the artists’ ideas of what is valuable, via these disparate mediums, personal collections and recollections. The Arts Center will be open daily from 11 am to 4 pm through November 10, 2020.



Inspired by the devastating, destructive and distressing aftermaths of fires, floods and various catastrophes, the artists take a deep look at what matters, and what is ultimately valuable. The show explores the meaning we attach to our “stuff” through the memories and stories we have attached to those things.



The sculptures, like a phoenix literally rising from the ashes, bring new life to what was lost. The goal of the exhibit is for each person to embark on their own personal journey, imagining their own unique valuables, and it is an opportunity to reflect on what is important in these times of ever-present climate caused adversities.

Visitors are encouraged to contribute their own memories to share during this exhibit. Sharing is simple. Bring an image and a description or short personal story on a half-sheet of paper or (preferably) on a 5”x7” card (see example). These personal memories will be tacked to the walls of the Elaine Jacob Foyer, to be shared with everyone. After having your memory posted by Holly Stiel, take time to enjoy the posted memories of others, take time to explore the exhibit of “My Valuables” in the Burnett Gallery. The exhibit includes sculpture by Peg Videtta, photography and paintings by Bill Apton, and contributions by artists Patrick Sumner and Sheila Davies Sumner.



### **Information**

GualalaArts.org

707-884-1138  
46501 Old State Hwy  
Gualala, CA 95445  
707-884-1138

Adding an even more personal touch, a wonderful video with music has been created by artist, writer, poet and curator Holly Stiel, along with composer Jana Stanfield.



## One Man's Journey, Rising from the Ashes of the Camp Fire through Art

**Brian Holderman**

Brian Holderman, whose art was created in the wake of 2018's Camp Fire, returns to Gualala Arts Center in October with new works along with some from his earlier show. While significant in its own right, Holderman's art is a perfect complement to the other exhibit at the Arts Center, "My Valuables-What Really Matters". Both exhibits opened October 2 and will continue through November 10, 2020.

**At Gualala Arts  
Elaine Jacob Foyer.**

**Opening  
Friday, October 2,  
11 am to 7 pm  
The exhibit continues  
through Sunday,  
November 10.  
Open daily 11 am to 4 pm.**



Brian Holderman moved to The Sea Ranch after losing everything in The Camp Fire that devastated the city of Paradise, California in 2018. After his move, painting became a creative outlet for the trauma he experienced. The paintings allowed him to release the pain he was holding. According to Holderman, "The Camp Fire Series are paintings about what happened to me on that day but ending with hope that things will rejuvenate and come back.

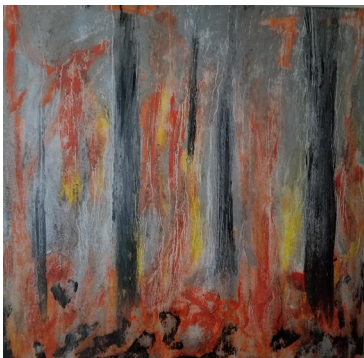
Even though it was a very devastating time in my life and there was a lot of destruction that happened, I can take that pain and do something creative and positive instead of turning my efforts into something that won't help me to grow from the experience. I can't change what happened, but I can make a decision about how I'll react to it."

This past year Brian has been able to take the time to heal and focus on his paintings. He uses salt in his acrylic paints to create pattern and texture. Many of his paintings have several layers of salt. Holderman added, "I have always been drawn to texture. I love the feel of bark on a tree, or old paint chipping off different surfaces. My intent is to draw the observer closer to my paintings, however, when the observer stands back, there are hidden figures. I like to hear what people see when they look at my paintings."

*Left: "Hope"*

*Below: "Friendship"*

*Bottom left: "Inferno"*



In this show visitors will see most of The Camp Fire Series (a few paintings have already been sold) along with video he shot during his experience on that day. He also brings his newest series of Chinese Symbols. There is his political statement for BLM, titled "The Cost of Unity" and many others. Brian's art will be featured at Gualala Arts Center in the Elaine Jacob Foyer. Gualala Arts is at 46501 Old State Highway, Gualala, California, 95445.

**Information**  
GualalaArts.org

707-884-1138  
46501 Old State Hwy  
Gualala, CA 95445  
707-884-1138

## Take A Treasure—Leave A Donation

Come To Coleman Hall, October 10 thru November 1

And Find Clothing, Costumes, Accessories, Art, Dining Pieces,  
Home Furnishings and More

The “Find Something You Like, Make A Donation and Take It Home” Event. **Find a treasure and leave a donation. Coleman Hall will be available during normal business hours, 11 am to 4 pm.**

Gualala Arts is excited to announce a unique event. Coleman Hall at Gualala Arts has been filled with hundreds of things that are worth a first, second or third look. And there are no prices on any item. Place your faves in a bag (provided by Gualala Arts) and simply make a donation as you leave. You determine the value. It couldn't be easier or more fun.

There are so many things you'll find it difficult to choose! There will be **lots and lots of clothing**: Bonnets, Bras, Bustiers, Capes, Caps, Chapeaus, Coats, Dresses, Gowns, Hats, Jackets, Sandals, Slacks, Slickers, Sweaters, Tams, Tops, Vests and more. Lots and Lots of clothing and costumes. **And there will be Things for the kitchen**: Blenders, Bowls, Canisters, Cookie Jars, Glasses, Mixers, Mugs, Pans, Platters, Pots, Salt & Pepper Shakers, Teapots, Tops, Trays, and Whisks. **Plus large and small items for the home**: Barometers, cabinets, Candlesticks, Chairs, Chests, Dolls, Framed Prints, Framed Hearth accessories, Paintings, Frames without Prints or Paintings, Mats, Objets D'Arts, Tables, Trays, Unframed Prints and Paintings, Urns and Vases.



Visit Coleman Hall at Gualala Arts Center • 11 am to 4 pm

Take A Treasure—Leave A Donation

Support Gualala Arts!





GUALALA ARTS



WINTER WONDERLAND



Come Join Us For “Winter Wonderland”

November 23 thru December 30\*

11 am to 4 pm • Admission Free

\*Closed Thanksgiving Day and Christmas Day



Welcome once again to the annual holiday retail shopping experience. There will be something for everyone, young and old.

The holidays are always a special time for adults and children on the Mendonoma Coast. The beautiful coastal landscape is a perfect backdrop, reminding many of their best holiday memories. Even the drive to and from the “Winter Wonderland” event at Gualala Arts will inspire. There will be so much to choose from, including gifts, decorations, food, art, trees (decorated and plain), a fundraising raffle, the tree decorating competition, and of course Santa Claus and a giant tree! Recorded Carols and holiday classics will fill the halls while you shop. A perfect kick-off to the Holiday Season, and a chance to find some unique gifts for friends and family and admission is FREE.

Proper social distancing will be maintained, and masks will be required. We want your visit to be safe, fun and full of memories.

Open 11 am to 4 pm every day (except Thanksgiving Day and Christmas Day) from November 23 to December 30.

# GUALALA ARTS WINTER WONDERLAND

—So Much To See & Do and Get Into a Holiday Mood—

- Locally made fine arts & crafts,
- Decorated trees competition and Silent auction
- Undecorated Christmas Trees (all sizes) for sale
- Fundraising Raffle
- Soups to go:
  - Chili
  - Chowder
- Mrs. Claus' Sweet Shop will have
  - Cookies (Full dozen, half dozen)
  - Whole Pies (Apple, Pecan, Pumpkin)
  - Slices to go.
- Santa's Mailbox, accepting childrens' letters to Santa.
- Recorded Holiday music to help with the holiday spirit
- Decorated Christmas Trees throughout the Arts Center



Proper social distancing will be maintained, and masks will be required. We want your visit to be safe, fun and full of memories. Open 11 am to 4 pm every day (except Thanksgiving Day and Christmas Day) from November 23 to December 30.

## 2021 Workshops: Making Plans For Next Year

While 2020 has been a difficult year for all of us, we are making plans for 2021. Included in those plans is a new slate of workshops. Gualala Arts offers workshops for almost all interests including:

You can propose or teach a workshop next year. Gualala Arts is now accepting workshop proposals for 2021. The deadline for proposals is October 31, 2020.

**Cooking (Sushi, Instant Pot, Fermentation, Nutrition) • Painting (Oil, Watercolor, Acrylic, Chinese brush) • Drawing (Basics, Sketchbook) • Quilting, Sewing • Fitness (Tai Chi, Martial Arts, Yoga, Aerobics) • Conversation & Dialogue • Ceramics (Pottery, Sculpture) • Marketing • Photography (General Introduction, Digital Basics, Advanced) • Theater (Performance, Vocal, Improv) • Community events and more.**

Planning ahead enables us to offer a full year of activities to better serve you. Contact the Gualala Arts office at 707-884-1138 or send an email to [info@gualalaarts.org](mailto:info@gualalaarts.org) with your name, contact information and your workshop idea.

---

## 2020 Pumpkin Carving Competition Time to Contact Gualala Arts and Get Carving



Just in time for the fun of Halloween, Gualala Arts announces its 2020 Pumpkin Carving Competition. Everyone is welcome to participate including children, adults, merchants, groups and local organizations. Pumpkins will be judged by age group: 7 and under, 8 to 17 and 18 years and up.

There's no better time than now to contact the front desk at Gualala Arts Center, and become part of this fun event. Pumpkin-carvers can contact Gualala Arts at 707.884.1138 to arrange

the pickup of your pumpkin to decorate or you can provide your own. A variety of sizes will be available from Gualala Arts while supplies last. Entry forms are due when picking up pumpkin. All pumpkins should be received at Gualala Arts either Monday or Tuesday, October 27 or 28, during regular hours, 11 am to 4 pm in the Jacob Foyer. Registering your pumpkin will be handled when you Check-in at the front desk.



There will be 1st place award winners in each age group. Winners will receive a Gualala Arts VIP package and \$50 cash, plus bragging rights. We look forward to your special pumpkin.

---



## The 2020 Annual Christmas Tree Competition is Here Support this Gualala Arts Fundraiser and Have Fun Doing It!

Once again this year Gualala Arts Center will be transformed from mid-November through the end of the year to create a real holiday feeling for all.

Adding to the holiday spirit is the annual Christmas Tree Competition, a favorite holiday tradition and fundraiser for Gualala Arts. (Trees from prior years' competitions are shown here as examples.) Contact the office at Gualala Arts and claim a Christmas tree to decorate. A variety of sizes are available on a first come first serve basis, or you can provide your own tree. Please remember that **entry forms are due by the pickup day of the blank trees. All trees should be received at Gualala Arts either Monday or Tuesday, November 16 or 17, 11 am - 4 pm** in the Jacob



Foyer. Check-in at the front desk to register your tree.

All trees will be displayed as part of the Winter Wonderland, and in turn be available for purchase by members of the community to help with Gualala Arts' holiday fundraising effort. Whether your decorating preference is for a small table-top tree, a room's centerpiece or something in-between, the Christmas Tree Competition is a community favorite.



**Join the competition for the bragging rights, for the three cash prizes—\$150, \$75, \$50— or join just for the fun of it.** The effort can be your own, or with a club, workshop or artists' group. Bring your Christmas Tree-decorating "A-game" and get into the spirit of the season.

All trees, including decorations, will be considered donations to Gualala Arts and will be made available for sale during the festival as part of the fund development. The tree designer will receive a donation form for tax purposes.



- **Registration form due November 13.**
- **Check in with the front desk to collect your faux trees before November 13.**
- **Registration forms must be complete & entered before tree pickup.**
- **A variety of trees sizes are available.**
- **Deliver Trees November 16-17, 11 am to 4 pm to the Gualala Arts Center.**
- **Check in with the front desk; call 707.884.1138 to set up an appointment.**
- **Open to the public beginning Monday, November 23.**

**Information**  
GualalaArts.org

707-884-1138  
46501 Old State Hwy  
Gualala, CA 95445  
707-884-1138