

Gualala Arts • December 2019

# SKETCHES

Exhibitions • Events • Workshops • Classes • And More



Kitka Concert • “WINTERSONGS: WEATHERING THE STORM”  
Gualala Salon and Salon des Refusés

Plus

Paul Brewer, Photographs • Dolphin Gallery Exhibit

“A Winter’s Evening” with Wind in the Wires

“A Concert for the Coast” with The Ernest Bloch Bell Ringers

The Coastal Singers: “Christmas Comes But Once A Year”

Remembering Christine Bussard • A Celebration of Life

## Contents

Executive Director's Letter.....	3
Gualala Salon & Salon des Refusés.....	4
Dolphin Gallery Exhibit.....	5
Ernest Bloch Bell Ringers.....	6
Coastal Singers Concert.....	7
Kitka "Wintersongs" Concert.....	8
Wind In The Wires.....	9
Festival of Nine Lessons & Carols.....	10
Christine Bussard Remembrance.....	11
Piano Group .....	11
Giving & Support for Gualala Arts...	12
Workshops.....	13-14
Announcements.....	15
Mark Your Calendar.....	16



DECEMBER 2019

### Gualala Arts, Inc.

46501 Old State Highway  
PO Box 244  
Gualala, CA 95445  
707-884-1138  
GualalaArts.org  
info@GualalaArts.org

### Arts Center Hours

Weekdays 10 am–4 pm  
Weekends Noon–4 pm

### Dolphin Gallery Hours

39225 Highway One  
Gualala, CA 95445  
707-884-3896

Hours: 10 am–5 pm

Wednesday through Monday,  
Closed Tuesday

Cover Photo by Vincent Louis Carrella

### Executive Director

David "Sus" Susalla

### Gualala Arts Board Members

Barry Weiss, **President**  
Kitty Wolfe, **Vice President**  
Bob Mitchell, **Treasurer**  
Andrea A. Lunsford, **Co-Secretary**  
Sheralyn Kirby, **Co-Secretary**  
Andrea Allen, Chris Beach,  
Mary Eberhard, Jon Handel,  
Dansie Little, Karen Tracy,  
Eric Wilder

Printed on 30% recycled paper.

© 2019 Gualala Arts, Inc.

Editor: Gualala Arts Staff

Publicity and Art Direction: David Steffen

Mailing Staff: Violet Arana, JoAnn Aiken,  
Trudy Armer, Pat Chaban, Karen Tracy,  
Harriet Wright, Linda Eastman, Marcie  
Johnston, Penny Dreyer, Rhonda Rhumrey,  
Dick Balch, Andrea A. Lunsford

Promoting public interest  
and participation in  
the arts since 1961

## Roof: *rōōf*, *rōōf*

*1. the structure forming the upper  
covering of a building, i.e. the structure  
protecting Gualala Arts Center.*



Local coastal roof contractor Efrain Holguin knows how important Gualala Arts Center is to our community and gave us a very good bid. Please consider making an additional donation to Gualala Arts this year end to help "replace the roof".



**37%....one of the best!**

**In 2019, we presented over 100 publicized events and close to 2,000 calendared events!** We hosted world class chamber music, children choirs from around the globe, one of a kind Jazz ensembles, art camp for youth, fine art exhibits every month in 3 galleries, art workshop series, community fundraisers, celebrations of life, exercise classes, special family celebrations, art festivals and much, much more. (Kitka, pictured here, performs Saturday, December 21.)

**Your arts center has now become a valued and counted on community asset for well over 20 years.** Part of owning that asset means we need to take care of it so that it remains a vibrant, solid place for the future generations.

**2019 is a critical year in building maintenance.** Efrain Holguin, local coastal roofer, is doing a complete tear off, replacing rot and putting a new roof on. Efrain knows how important of a community treasure this is, how tight our budget can be and gave us a very reasonable bid...a collective "thank you Efrain!" We also attacked our termites and continue to create a less pleasing environment for our bugs and critters to stay out and enjoy the forest but NOT our arts center.



Protecting our treasured community arts center is one of the priorities of the board, volunteers and staff; our highest priority remains our mission, "promoting public

interest and participation in the arts."

To achieve these priorities **we call on you, our faithful membership and donors,** to rise to the occasion and give generously this year.

Industry standard for financial support runs 50% or higher for most arts organizations, Luther Burbank states on their website, "Ticket sales cover only 50% of our costs." Thanks to our wonderful volunteers, and our frugal hard working staff, **Gualala Arts only needs about 37% support in donations above and beyond our ticket revenue. It's good to know that.**

**Our annual fund campaign is critical in bridging that 37% gap in programming** and helping us pay for the much-needed building maintenance this year.

**Please consider giving a little more this year. Gualala Arts has one of the lowest percentages of support needed for arts non-profits.**

**With sincere gratitude....**

David "Sus" Susalla  
Executive Director, Gualala Arts





**Burnett Gallery and  
Elaine Jacob Foyer**

**Gualala Arts'  
Juried and Judged  
Fine Art Exhibit**

**Opening Reception**

Friday, December 6  
5 to 7 pm  
Elaine Jacob Foyer &  
Burnett Gallery

**Exhibit remains through**

Sunday, January 5, 2020  
Free



*Above: 2018 winner,  
Lauren Sanford.*

*Upper right: "Symphony in  
White, No. 1: The White Girl", by  
James Whistler.*

*Near right: "Le Déjeuner sur  
l'Herbe", by Édouard Manet.*

**Information**

GualalaArts.org

707-884-1138  
46501 Old State Hwy  
Gualala, CA 95445  
707-884-1138

**7th Annual Gualala Salon and  
Salon des Refusés**

The annual Gualala Salon & Salon des Refusés opens with a reception Friday, December 6, from 5 pm to 7 pm.

There's always great anticipation for this juried and judged fine art exhibit which, after Art in the Redwoods, remains the largest exhibit at Gualala Arts; the annual Salon & Salon des Refusés has the largest number of entries of any other open call show and fills both the Burnett Gallery and Elaine Jacob Foyer. Many artists save their best new art for this exhibit as the Salon has gained much notoriety as a judged show by well-qualified people in the arts one that provides significant awards. The exhibit showcases outstanding visual art and artists without regard to the type of media.

As per tradition, the judges decide what artwork is accepted into the Salon (exhibited in the Burnett Gallery.) The art not juried into the Salon by the judges is displayed in the Salon des Refusés (located in the Elaine Jacob Foyer). All artwork submitted into the show will be exhibited at Gualala Arts although just which artists are selected into the Salon is a tightly kept secret until opening night. Pictured (left) is last year's top winner, Lauren Sanford.



This year's monetary awards include a first prize of \$1,000, second prize of \$750, and third prize of \$500. In addition, the People's Choice awards in the Salon des Refusés include a first prize of \$100, second \$75 and third \$50. The award for Emerging Artist Under 18 years of age is \$100.

The original Salon des Refusés was an exhibition that took place in Paris in 1863. It was created to show works that had been rejected by the official Paris Salon conservative judges who represented the French Academy. In 1863, they rejected almost 3,000 pieces of work which resulted in loud protests by the artists. Emperor Napoleon III ordered a new exhibition—dubbed the "Salon des Refusés" – in order for the public to judge the merits of the artwork themselves. Come and enjoy Gualala Arts' renewal of that idea and judge (and vote) for yourself.



*The Salon is sponsored by generous donors; not by Gualala Arts or the North Coast Artists' Guild.*

## Paul Brewer "Photography"

Dolphin Gallery

Continuing at the Dolphin Gallery in December is an exhibit of the works of award-winning photographer Paul Brewer. Brewer is a pioneer in adopting and showing Dye infused metal prints. He's been exhibiting metal prints for over 8 years. 100 percent of this show will feature metal prints. The exhibit opened at the Dolphin Gallery November 23 and continues through January 5, 2020.



Brewer has been a featured artist with exhibits at the Dolphin on four different occasions. This will be his first one-person show. With this show, Brewer has been able to take advantage of the opportunity to exhibit a range of sizes, frame options and prices. (Including a couple of frames that have not seen before.)

In the midst of the holiday season, he will be offering some extraordinary values starting with \$30 stocking stuffers. The display will include both old favorites and photos that have not previously

been displayed, and it will include several large art pieces.

In addition to being present opening night, Brewer plans to be available as he volunteers at the Dolphin Gallery for 4 Saturdays during the Holidays: November 30, and December 7, 14 and 21 from 1:30 pm to 5 pm. He enjoys working with customers to provide a custom solution to meet their requirements. In addition to photo options, he will be there to discuss print finish (gloss or satin) print size and frame options that can significantly impact price. Turn around time is normally 7 to 10 days.

Paul Brewer's photographs have won numerous Art In The Redwoods awards, including twice being voted most popular. His most recent award was in 2019 when he received judges' first place in Color Photography award.

The exhibit continues through Sunday, January 5, 2020.

### Paul Brewer's Featured Photographs are 100% Metal Prints

Opening Reception  
Saturday, November 23, 2019  
5 - 7 pm  
Dolphin Gallery  
Free

**Exhibit remains through**  
Sunday, January 5, 2020  
Free



*Images: Upper left: "Rufous Flashing". Above: "Welcome to Gualala". Photographs by Paul Brewer.*

#### Information

GualalaArts.org

707-884-1138  
46501 Old State Hwy  
Gualala, CA 95445  
707-884-1138

## **The Amazing Bell Ringers Bring an Accent to the Holidays**

### **Concert Performance**

Saturday, December 14  
3 pm  
(Santa arrives at 2:30 pm)  
Gualala Arts Coleman Hall

### **Tickets**

\$15 advance,  
\$5 more the day of  
Youth 7-17 Free with adult



Purchase tickets at  
[BrownPaperTickets.com](http://BrownPaperTickets.com)  
1-800-838-3006  
Gualala Arts Center  
Dolphin Gallery

### **Information**

[GualalaArts.org](http://GualalaArts.org)

707-884-1138  
46501 Old State Hwy  
Gualala, CA 95445  
707-884-1138

## **Ernest Bloch Bell Ringers & Friends “A Holiday Concert For The Coast” Saturday, December 14**

The Ernest Bloch Bell Ringers will present their annual Holiday for the Coast concert on Saturday, December 14 at 3 pm in the Coleman Auditorium of the Gualala Arts Center.

This concert is sure to get you in the holiday spirit. The concert opens with “Repeat the Sounding Joy.” A favorite perennial is “Carol of the Bells.” A hauntingly beautiful arrangement of “A Midnight Clear” will be performed. Talented local musicians will join the bell ringers. Dan Laux will play the hammered dulcimer on “What Child is This?” Cyndy Solomon and Mary Visser will play a recorder duet on “Lo, How a Rose E’re Blooming,” and Karl Young joins the bell ringers with his shakuhachi on “Star of Wonder.”



Singing is always a part of the bell ringers’ concerts. You won’t want to miss hearing Remi Alexander singing “I Saw Mommy Kissing Santa Claus” and Sita Milchev

singing the lovely “I Wonder as I Wander.” Sita will be joined by Cassy Grossman performing Handel’s “For Unto Us a Child is Born.” The audience will be invited to join the bells in singing “Winter Wonderland” led by Cinnamon Rippey and Linda Bostwick, “Silver Bells” led by Remi, “Angels We Have Heard on High,” and the traditional closing piece, “Silent Night.”

Another highlight to brighten spirits will be the first-time appearance of the mother/daughter duo, Micheline and Khai Kirby, who will be performing the narrated “Twinkle and the Bethlehem Star.”

Santa will be at GAC at 2:30 pm to greet concert goers, handing out candy canes to youngsters of all ages.

Tickets are \$15.00 in advance and \$20.00 the day of the concert. For further information, contact Bell Director Jeanne Jackson at 707) 884-1761.



## Coastal Singers Concert "Christmas Comes But Once A Year" Sunday, December 15

Local Eyes and the Global Harmony Series present the Coastal Singers for a holiday concert, Sunday, December 15, 4 pm in Coleman Hall. Tickets are \$15 in advance, plus \$5 when purchased the day of. Youth 7-17 are free with adult

The Coastal Singers, under the direction of Sue Bohlin, will present "Christmas Comes But Once a Year". Some snacks along with tea, coffee, and hot chocolate will be served.

The concert will introduce a few new pieces to our coastal audience including "Sure on This Shining Night" by the American composer, Morten Lauridsen, "Breath of Heaven" by Amy Grant, "Our House" by Graham Nash and "Little Birch Tree", arr. by Sue Bohlin.. As in the past, a variety of musical



styles will be performed to appeal to the multi-dimensional tastes of our audience; among them, Irving Berlin's "Steppin' Out with My Baby" and the rollicking Irish piece that provides the title of the concert, as well as the theme song (Adiemus)

from the movie Avatar. For information and tickets, please call 884-1138 or visit Gualala Arts, Dolphin Gallery or on the web at BrownPaperTickets.

Sue Bohlin, Director

*The Coastal Singers would like to thank all the instrumentalists who have made this concert special. We welcome members of our community to join our group.*



**Something old,  
something new,  
something seasonal  
from your  
Local Community Chorus**

### Concert Performance

Sunday, December 15  
4 pm  
Gualala Arts Coleman Hall

### Tickets

\$15 advance,  
\$5 more the day of  
Youth 7-17 free with adult



Purchase tickets at  
BrownPaperTickets.com  
1-800-838-3006  
Gualala Arts Center  
Dolphin Gallery

### Information

GualalaArts.org

707-884-1138  
46501 Old State Hwy  
Gualala, CA 95445  
707-884-1138

**Global Harmony  
Present  
Kitka in Concert.**

**Concert Performance**

Saturday, December 21  
7 pm  
Gualala Arts Coleman Hall

**Tickets**

\$25 advance,  
\$5 more the day of



Purchase tickets at  
BrownPaperTickets.com  
1-800-838-3006  
Gualala Arts Center  
Dolphin Gallery

**Information**

GualalaArts.org

707-884-1138  
46501 Old State Hwy  
Gualala, CA 95445  
707-884-1138

**“Wintersongs: Weathering the Storm”  
Kitka in Concert, Saturday, Dec. 21**

Coming in December is a unique musical offering at Gualala Arts. Kitka is an American women’s vocal arts ensemble inspired by traditional songs and vocal techniques from Eastern Europe and Eurasia. They’ll perform at Gualala Arts Coleman Hall on Saturday, December 21 at 7 pm. Tickets are \$25 advance, \$5 additional when purchased the day of. Tickets available at BrownPaperTickets, at Gualala Arts and Dolphin Gallery.

Founded in 1979 as an offshoot of the Westwind International Folk Ensemble, Kitka has evolved into an award-winning professional touring ensemble known for its artistry, versatility, and mastery of the demanding techniques of regional vocal styling, as well as for its innovative explorations in new music for female voices.



*Photo by Vincent Louis Carrella*

Kitka began as a grassroots group of amateur singers from diverse ethnic and musical backgrounds who shared a passion for the stunning dissonances, asymmetric rhythms, intricate ornamentation, and resonant strength of traditional Eastern European women’s vocal music.

Kitka’s wide-ranging performance, teaching, and recording activities have exposed millions to the haunting beauty of the ensemble’s exquisite and unusual repertoire. With deep ties to Balkan, Slavic and Caucasian lands, Kitka has performed, taught, and conducted cultural exchange activities in venues throughout North America, Europe and beyond.

A review in the San Francisco Chronicle stated that “Kitka’s songs are hauntingly beautiful, simple, yet otherworldly. The rich sound these women produce resonates as if energized by the universe itself, as if it were calling all live beings and still matter into togetherness and unity.”



## **"A Winter's Evening" with Wind In The Wires Sunday, December 22**

Throughout history, people of the northern hemisphere have celebrated the Winter Solstice as a profound turning point when light is renewed within a period of deep darkness, of natural quiet, of openness to the night sky. Celebrate the first evening of Winter at Gualala Arts on Sunday, December 22 at 4 PM with Wind in the Wires. The trio features Karl Young, shakuhachi; Janet Debar, didgeridoo & spoken word; & Chris Doering, 7 string guitar & gizmos. The trio embellishes didgeridoo dronescapes and poetry with the sounds of wind blowing through bamboo and nylon strings vibrating in imaginal spaces. The trio's music is grounded in the didgeridoo, developed by Australian aboriginal people about 1500 years ago. Improvised elaborations on the drone draw on traditional forms from Japan, India and Europe as well as modern jazz. We hope to surprise everyone, including ourselves.

This concert presents an opportunity to deepen our experience of this transitional moment and celebrate the Sun's immanent return.



Young added, "The shakuhachi embraces a different concept that encompasses a much broader range of timbral characteristics, which opens up greater expressive possibilities for the player who can assert some degree of control over them. Coming from a background in western music, I find improvisation with melodic and harmonic structures important, and the seven-string guitar as the third element of the ensemble perfectly fulfills that mixture, while adding intriguing sonic texture of its own. So there's lots of sonic character available from these three instruments." And Debar's deeply moving poetry adds an extra-musical dimension that provides an even larger canvas for Wind in the Wires performances.

**Karl Young, shakuhachi;  
Janet Debar, didgeridoo  
& spoken word;  
Chris Doering, 7 string  
guitar & gizmos**

### **Concert Performance**

Sunday, December 22  
4 pm  
Gualala Arts Coleman Hall

### **Tickets**

\$15 advance,  
\$5 more the day of  
Youth 7-17 free with adult



Purchase tickets at  
BrownPaperTickets.com  
1-800-838-3006  
Gualala Arts Center  
Dolphin Gallery

### **Information**

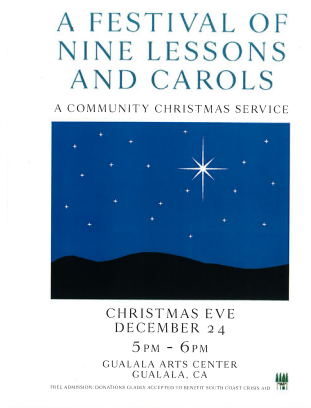
GualalaArts.org

707-884-1138  
46501 Old State Hwy  
Gualala, CA 95445  
707-884-1138

## **27th Annual Evening for the Community**

Tuesday, December 24,  
5 pm to 6 pm  
Gualala Arts Center  
Coleman Hall

Donations are welcomed.



### **Information** GualalaArts.org

707-884-1138  
46501 Old State Hwy  
Gualala, CA 95445  
707-884-1138

## **A Festival of Nine Lessons and Carols Tuesday, December 24**

The Festival of Nine Lessons and Carols will again be presented at the Gualala Arts Center Coleman Auditorium on Christmas Eve, Tuesday, Dec. 24 from 5 pm to 6 pm. Admission is free.

During this annual community event, the audience will join in singing the nine carols, all old favorites familiar to many. Interspersed with the carols, clergy and readers representing most of the coast faith communities share



Bible passages that tell the Christmas story. Don Krieger provides musical accompaniment. Community favorite Sita Milchev returns to sing a special carol.

The Festival of Nine Lessons and Carols follows the format offered since 1918 at King's College Chapel in Cambridge, England. The Festival was introduced to bring a more imaginative approach to worship, and is accessible and inviting to people of all ages and backgrounds.

The Service of Nine Lessons and Carols continues to be offered at King's College Chapel and has been broadcast by the BBC since the 1930's. The service was first held on the Mendonoma Coast in 1992, and is now in its 27th year, with programs held at Gualala Arts since 1998.

Seating is limited and quickly fills up, so plan to arrive early. Donations are welcomed, and those received will go to support the South Coast Crisis Aid (also known as South Coast Crisis Line). These donations are the primary source of funding for SCCA, supporting emergency food, fuel, bus transportation and lodging assistance throughout the year via vouchers distributed by local clergy and Action Network in Gualala and Point Arena.

## **Christine Bussard:**

### **A Celebration and Remembrance At Gualala Arts December 1**

A celebration and remembrance of the life of Christine Bussard is scheduled for Sunday, December 1, from 1 pm to 4 pm at Gualala Arts Center.

Christine Marie Odenweller Bussard of Gualala, California died unexpectedly on Monday, September 16, 2019. She was surrounded by friends and family.

She was born August 31, 1951 in Fairfield, California, and was a professional master florist and event planner for 48 years. She worked in Vacaville, Dixon, Davis, Sacramento, San Diego and more. At one time she was voted one of the top -10 florists in California.

Christine volunteered in the town of Gualala. She was often found at Gualala Baptist Church, Gualala Lions Club, Gualala Community Center, Pay n Take, Coastal Seniors, Soroptimists and Gualala Arts Center to name a few. She loved going to the beach, especially her favorite beach, "Anchor Bay." She loved helping those that needed help, especially the seniors even though she was a senior herself. She loved decorating, in particular to see it come alive by her hands and loved her family and friends the most. Family was her life and always has been.



Join members of her family, friends and community at Gualala Arts Center, Sunday, December 1. Her funeral is Saturday, November 30 at Gualala Baptist Church, 37300 Church St., Gualala, 95445. An account has been set up at West America Bank under Christine Bussard Memorial Fund Account.

### **Local Piano Group "Re-Boots" & Rekindles Interest in The Yamaha Concert Grand Piano at Gualala Arts**

Dianne Rasmussen has helped organize the local Piano Group at Gualala Arts. She has put out the welcome mat for all pianists, string instrument musicians . . . all musicians into a new group. Their goal is monthly recitals for each other, and more formal recitals during the year for the community at the Gualala Arts Center. This brings to mind the wonderful Yamaha Concert Grand piano at Gualala Arts and the remembrance of how the superb Yamaha instrument came to be a centerpiece of many performances at Gualala Arts.



The short version is this: Larry Lobel met David Lytle in 2000, when Larry tuned Mr. Lytle's Steinway Baby Grand. In the course of numerous tunings, the conversation turned to, what else, pianos. Mr. Lytle—who was interested in purchasing a new piano—was invited to Larry's home to play his Yamaha

Concert Grand. Mr. Lytle played for more than an hour and, convinced the Yamaha was the instrument for him, he replaced his Steinway with a new Yamaha.

During subsequent conversations, one of their topics was finding a 'good instrument' for the outstanding pianists coming to Gualala Arts. After David Lytle's death, Larry spoke with his son, Douglas, about the disposition of the Yamaha Concert Grand. With thought and timing, David Lytle's son donated the piano to Gualala Arts. And Larry was certain that David Lytle would be pleased with the Yamaha's new home. [note: For information about the new Piano Group, please call or email Dianne Rasmussen, coordinator, at 707-331-5065 or livdianne@gmail.com.



## **You Make A Difference!** **Here are Some Ideas for Supporting Gualala Arts** **as 2019 Comes to a Close.**



We believe giving and receiving are two sides of the same coin. When we give our time, our energy, our focus, our generosity, it comes back in that good feeling we get in making things better for our community.

As 2019 comes to a close please keep Gualala Arts and its mission in mind as you consider year-end support. There are many reasons to give and a variety of ways you can support Gualala Arts.

**Cash Donations** are always Welcome. These can be made in person or by mailing a check. (And we have a donations box in the lobby next to the office. Add to it anytime your here.)



You can choose to make a **one time or recurring on-line contribution** at [GualalaArts.org](http://GualalaArts.org) with PayPal or a credit card.

The **IRA Qualified Charitable Distribution** is now a permanent provision of the Federal Tax Code. You can also name Gualala Arts as a beneficiary for your IRA or other retirement account.

# IRA

# INVEST

**Donating investments**, especially highly appreciated securities, can be a very effective and tax-efficient way to support a charity. (Please let us know they are coming! Sus can help you out with the right forms and numbers.)

This year's "**Giving Tuesday**" is December 3. It's an opportunity to give to a charity after doing your holiday shopping, before holiday shopping, or in lieu of holiday shopping. Look for a link at our website, [GualalaArts.org](http://GualalaArts.org).



## More Than 30 Workshops are planned for 2020! Treat Yourself or Give as a Gift.

### Painting, Yoga, Cooking, Drawing, Theater, Photography and More!

Gualala Arts has one-day and multi-day workshops to complement your time and talents, help develop your skills, and improve your brain. Treat yourself to a workshop. Or, with the holiday season approaching, **consider gifting a workshop to a special friend or family member.** It's simple to register and to give a gift. Select a workshop in this issue of Sketches, or check the Gualala Arts website for many more. Contact the Gualala Arts office at 707.884.1138. Descriptions of many more workshops can be found on the web. Look for the "Workshops" menu at GualalaArts.org. And we have ongoing classes (a list is on page 15 of this issue of Sketches).



#### One Day Oil & Acrylic

with instructor Elio Camacho. A Painting Workshop.

**Friday, December 13, 9 am - 4 pm**

Gualala Arts Center

\$95 for GA Members; \$110 for Non Members, No materials fee. **Sign up by Dec.6.** Call 707-884-1138.

This workshop will focus on helping students develop the tools needed for growing as a painter and artist. The class is structured for both beginner to advanced students who want to develop their skill, understanding and using color. Students will learn the foundation necessary to be creative and to assist students in capturing the particular mood of the moment and express themselves in a bold and colorful way, while capturing the beauty and spontaneity of life.



#### Chinese Brush Painting

A workshop with instructor Andrea Allen.

**Thursdays, January 9 - February 13, from 2 pm - 4 pm**

Gualala Arts Center

\$120 for GA Members & \$135 for Non Members, \$32 Materials Fee to be paid to instructor. **Sign up by Jan. 2.** Call 707-884-1138.

Learn the ancient art of Chinese Brush Painting, including grinding your own Sumi Ink, loading the Calligraphy Brush & applying the Dynasty-old brush strokes to rice paper, creating bamboo flowers & more. This class includes Asian symbolism & philosophy, enhancing the serenity that comes from ancient, Asian traditions.



#### Instant Pot 101

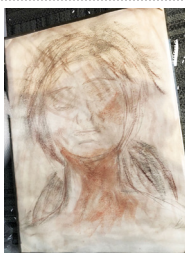
With instructor Jill Nussinow

**Sunday, January 12, from 1 pm - 4 pm**

Gualala Arts Center

\$55 for GA Members & \$70 for Non Members. \$13 materials fee. **Sign up by Jan 5.** 707-884-1138

The Instant Pot (and electric multicooker, etc.) is one of the best-selling kitchen appliances of all time. This class will help you learn how to effectively use the Instant Pot (or other pressure cooker) to make easy and tasty meals. This class will be based solely on the good-for-you plant foods such as beans, whole grains, vegetables and fruit, and you will learn how the cooker can make more than one dish at a time. Students receive a recipe packet and have samples of all the food that is cooked.



### **Making Art With Dialogue**

With instructor Harriet Oden

**4th Friday of each month, beginning Friday, January 24, from 10 am - 4 pm**

Gualala Arts Center

\$500 for the year, or \$50 per month. **Sign up by Jan 17.** 707-884-1138

Monthly meetings of five hours explore relationship, in the spirit of creative inquiry, developed by the late physicist-philosopher David Bohm. He proposes an intelligent and compassionate approach to understanding and changing ourselves and changing our society. We will experiment with David Bohm's world-view, in the form of dialogue that unfolds in the spirit of seriously rigorous inquiry similar to sharing meditation.

---



### **Instant Pot: Beyond the Basics**

With instructor Jill Nussinow

**Tuesday, January 28, from 1 pm - 4 pm**

Gualala Arts Center

\$55 for GA Members & \$70 for Non Members. \$13 materials fee. **Sign up by Jan 21.** 707-884-1138

Designed for you if you already have an Instant Pot, or other pressure cooker, and know how to use it but feel like you could learn more and do more. In this class, Jill will show you how to cook pot in pot, making multiple dishes at once, and share other tips and recipes for more experienced users. Come ask questions and to sample what is made.

---



### **Sailor's Hearts** With instructor Angela Lang

**Sunday, February 2, from 12 pm - 4 pm**

Gualala Arts Center

\$55 for GA Members & \$70 for Non Members. \$5 materials fee. **Sign up by Jan 26.** 707-884-1138

We will gather and adorn "Sweetheart Pin Cushions", inspired by hearts created by sailors longing to connect with loved ones. The workshop will be focused on creating (with stitching, beading and notions) a surface design on a pre-sown, stuffed heart base that is made of vintage fabric. Participants may bring in significant beads, charms, threads, ribbons, jewelry and other unique pieces to incorporate into their designs. Notions will also be provided.

---



### **Fermentation Basics** With instructor Jill Nussinow

**Sunday, February 2, from 1 pm - 4 pm**

Gualala Arts Center

\$55 for GA Members & \$70 for Non Members. \$15 materials fee. **Sign up by Jan 26.** 707-884-1138

You have likely heard that fermented foods are good for you. As Jill states, "The good news is that they are also easy to make right in your own home with just a few easy-to-purchase items." In this class, Jill will review the important aspects of fermenting and why it's healthful. She will review popular ferments and you will taste a number of them. You will learn to make your own sauerkraut or kimchi- flavored to your taste and fermented nut and/or seed cheese. This is a hands-on class and materials will be provided. You will receive fermenting supplies as well as taking home a jar of something to ferment. Jill will teach you how to continue the process at home for better health, flavor and longevity.

---

***Visit [GualalaArts.org/workshops](http://GualalaArts.org/workshops) for more details!***



## ANNOUNCEMENTS | GUALALA ARTS CENTER

### Gualala Arts Readers Theater

Tuesday, December 3, 2019 at 7 pm, Readers Theater will have its annual potluck and open reading. Members are asked to bring food to share, their own dishes, and something no longer than 10 minutes to read. Readers can combine their time to do scenes if they wish. For info contact Mary Sue Ittner, 707-884-4824

On January 7, 2020 at 7 pm. Readers Theater will be reading "The Plough and the Stars" by Sean O'Casey, a play that centers around the 1916 Easter Rising in Dublin. For information contact Mary Retzer, 707-785-3618.

### Gualala Arts Book Club

There will be no Book Club selection for December.

Instead there will be a holiday party Wednesday, December 11th, 12:00 noon at the Gualala Art Center & we request that everyone attending brings a dish to share and a children's book to donate.

For more information contact Paula Gordon at 707-884-3823 if you plan to attend (RSVP).

### Collage User Group

This group meets the second and fourth Tuesday of the month in the Upstairs Classroom from noon to 4 pm.



There is a \$5 fee per meeting.

All levels and mixed media styles welcome. The goal of the Collage User Group is to promote the building of a community of artists who enjoy exploring mixed media techniques for self-discovery and artistry.

---

## **ONGOING CLASSES**

**AEROBICS** - Mondays, Wednesdays, Fridays 8 am – 9:15 am with Debbie Langwell

**BALLROOM & LATINA DANCING** - Fridays 6 pm to 8 pm, with instructors Anthony and Suzanne Cuesta. Ongoing class.

**COLLAGE INTEREST GROUP** - Every Second & Fourth Tuesday of the month, 12 pm - 4 pm in the classroom.

**CREATING GREETING CARDS** - 3rd Thursdays of the month 1 - 3 pm with Susan Schultz.

**EXPLORING DRAWING & PAINTING** - Tues. & Thur. 1:30 – 3:30 pm with Genny Wilson.

**FIBER ARTS AND BASKET GROUP** - 1st Thursday of the month.

**FOPO Pizza Group** - Last Tuesday of the month, April-September.

**GUALALA ARTS CLAY STUDIO** - Monday, 10 am – 4 pm. Volunteer instructors available. (Newcomers must first meet with volunteer Jane Head on Monday.)

**LIFE DRAWING** - Wednesdays, 2 pm - 5 pm. Open to all skill levels (including beginners) on a drop-in basis.

**MARTIAL ARTS** - Mondays & Wednesdays 6 – 7:30 pm with Lini Lieberman-Erich

**PIANO GROUP** - Monthly meetings. Contact Dianne Rasmussen at 707-331-5065.

**SWING DANCE** - Tuesdays, Lesson 6 to 7 pm with Dance following until 8:30 pm with instructors Al Mayberry and Mary DeLave.

**TAI CHI** - Mondays 3 – 4:30 pm, with Justine Rosenthal.

## Mark Your Calendar

### Gualala Arts Center Exhibit

Gualala Salon and Salon des Refusés  
Burnett Gallery & Elaine Jacob Foyer

Opening Reception Friday, Dec. 6, 5 pm - 7 pm

### Dolphin Gallery Exhibit

Paul Brewer, "Photography"

Continues through Sunday, January 5

### Events

**Christine Bussard "Celebration & Remembrance"**

Sunday, December 1, 1 pm to 4 pm

**Ernest Bloch Bell Ringers "A Concert for the Coast"**

Saturday, December 14, 3 pm

**Coastal Singers "Christmas Comes But Once A Year"**

Sunday, December 15, 3 pm

**Kitka "Wintersongs" Concert - Coleman Hall**

Sunday, December 21, 7 pm

**A Winter's Evening with Wind In The Wires**

Sunday, December 22, 4 pm Performance

**Festival of Nine Lessons and Carols**

Tuesday, December 24, 5 pm

### Purchase Tickets

At [BrownPaperTickets.com](http://BrownPaperTickets.com) or 1.800.838.3006  
or in person at Gualala Arts Center or Dolphin Gallery

## Coming Events

### January Exhibits

#### "Where The Journey Takes Us"

Featuring the Artworks of Composition 4 -  
Jenny Wantuch, Victoria Veedell, Sara Post and  
Michelle Andres

Burnett Gallery, Gualala Arts

Opening Reception, Friday, Jan. 10, 5 pm - 7 pm

#### "Water's Edge"

The Art of Nicole Martensen

Elaine Jacob Foyer, Gualala Arts

Opening Reception Friday, Jan. 10, 5 pm - 7 pm

#### "Collage Group"

Dolphin Gallery

Opening Reception Saturday, Jan. 11, 5 pm - 7 pm

### January Events

#### Eric Kritz & Friends

Chamber Music Concert

Sunday, Jan. 19, 4 pm



### Gualala Arts Center

46501 Old State Highway

PO Box 244

Gualala, CA 95445

707-884-1138

[info@GualalaArts.org](mailto:info@GualalaArts.org)

[GualalaArts.org](http://GualalaArts.org)

U.S. Post Paid  
Nonprofit Org.  
Permit #1  
Gualala, CA  
95445