

Gualala Arts • February 2016

# SKETCHES

Exhibitions • Events • Workshops • Classes • And More

Wednesday, Feb 24, 3 pm  
***Hearts for the Arts  
Annual Member's Meeting &  
Volunteer Recognition***



## Opening Receptions

Friday, Feb 5, 5 pm / Arts Center  
***Surrealism***

Saturday, Feb 6, 5 pm / Dolphin  
***Barbara Sapienza Painting & Susan  
Shaddick Sculpture***

Sunday, Feb 14, 4 pm  
**Chamber Music Series**  
***Zlatomir Fung: Solo Cello***



Saturday, Feb 27, 5 pm  
Gualala Arts Theater presents  
***Murder in Gualala***

## CONTENTS

Exhibitions • 4
Hearts for the Arts • 6
Friends Forever • 8
2015: What a Year! • 9
Special Events • 11
Workshops & Classes • 14
Announcements • 15



FEBRUARY 2016

### Gualala Arts, Inc.

46501 Old State Highway  
PO Box 244  
Gualala, CA 95445  
(707) 884-1138  
GualalaArts.org  
info@GualalaArts.org

### Arts Center Hours

Weekdays 10 am–4 pm  
Weekends Noon–4 pm

### Dolphin Gallery

39225 Highway One  
Gualala, CA 95445  
(707) 884-3896  
**Hours:** Thursday through Monday,  
10 am–4 pm. Closed Tuesday and  
Wednesday

### Gualala Arts Board of Directors

Rich Schimbor, President  
Roland Stoughton, Vice President  
Peggy Berryhill, Second Vice President  
Don Krieger, Treasurer  
Alan Grossman, Co-Secretary  
Lynn Bailey, Co-Secretary

David "Sus" Susalla, Executive Director

### Board Members

Phil Atkins, Chris Beach, Rosemary  
Campiformio, Teri Cooper, Karen Hay,  
Andrea A. Lunsford, Alfredo Orozco,  
Richard Pfeifer

### SKETCHES, February 2016

Printed on 30% recycled paper.  
© 2016 Gualala Arts, Inc.

Editor: Gualala Arts Staff

Art Director: Connie King

Mailing Staff: Violet Arana, Trudy  
Armer, Marilynn & Dick Balch, Irma  
Brandt, Pat Chaban, Marion & Paul  
Fishman, Ann Graf, Nita Green, Colleen  
Jackman, Lee Kosso, Harmony Susalla,  
Karen Tracy and Harriet Wright

## CASTING CALL FOR CAST & PRODUCTION CREW



### La Cage aux Folles, The Musical Gualala Arts Center

#### AUDITIONS

Saturday, February 20, 6 – 8 pm

Sunday, February 21, 1 – 3 pm

#### CALLBACKS – CASTING ANNOUNCEMENT

Sunday, February 28th, 2 pm

**Show Dates:** July 22, 23, 24, 29, 30, 31, 2016

Gualala Arts Theater is proud to announce its 2016  
musical production of *La Cage aux Folles*, directed by Teo Ariola  
with musical direction by Don Krieger.

**Auditions are open** to anyone interested in playing a role: singing  
and non-singing roles for women, men and older mature youth.  
Production crew is also needed: set designers, builders, artists,  
painters, costumers and backstage crew. No previous experience  
is necessary.

**Contact Sophia Mitchell** for cast or production crew information,  
scripts, and music: sophiatheater@gmail.com or (619) 559-2460.  
Please review script and music in advance of auditions.

## The Art of Spinning Plates

What a year we have begun as Gualala Art's collaborative efforts stretch far and wide! Now that 2015 is part of our history, with much to be proud of and grateful for, we are well under way into 2016 with grand plans for the future. The multitude of current activities reminds me of the "art of spinning plates on sticks." But more on that later ...

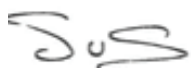
After enjoying a very successful January 14 celebrating the life and legacy of Millard Sheets at the Scottish Rite Masonic Center in San Francisco, we moved full swing into the Stone Foundation Symposium, workshops and Legacy build right here at Gualala Arts Center.

This month, at our Annual Members' Meeting and Hearts for Arts Celebration, we will honor all the hard working volunteers who contribute so much to us and the community. We will also take this time to express our appreciation to the Board of Directors for their guidance, and welcome new Board Members to our team.

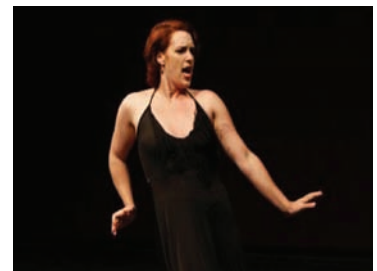
We are actively engaged with all of our interest groups, planning the annual activities, festivals, exhibits, workshops and concerts for the coming year. We're having some excellent new ideas in the process, and there are even rumors that a murder is being plotted!

We look forward to the number and variety of events we will host for the community this year—the fund raisers, classes, meetings, weddings, and yes, the celebrations of life. We understand and value our role as host, and are honored to take part in each of life's important moments.

As we look back, and as we anticipate the next curtain opening, it is important to stay present in the journey—and this is where I get back to the "art of spinning plates." I'm a firm believer that the *art* is in the collaboration, the hard work, trust, love and respect we share—*that* will ensure the arts in our community will thrive for years to come.



David "Sus" Susalla  
Executive Director



Above: A collaborative work by Jim Vickery, Arana Means, and Bruce Jones from Gualala Arts *Surrealism* exhibit, p2. Hearts for the Arts Volunteer Recognition, p6. Bryn Harris in performance for Valentine's Eve event: Bewitched, Bothered and Bewildered, p11.

Cover images clockwise from top: Jane Head, co-award winner for Group of the Year, Ceramic Studio, with young artists; Bruce Jones, co-Volunteer of the Year; Charlotte Burnett, 1919-2015; Zlatomir Fung, solo violinist; Murder in Gualala; Linda Eastmen, co-Heartbeat Award; Wilma and Ben Klagenberg, Volunteers of the Century.



**February 5 – 28**

Burnett Gallery &  
Elaine Jacob Foyer

**Opening Reception:**

Friday, February 5, 5–7 pm  
Free

## Surrealism

North Coast Artist Guild and Local  
Collectives Art Exhibit  
Curators: Bruce Jones and  
Doric Jemison-Ball

**Arts Center Hours**

Weekdays 10 am–4 pm  
Weekends Noon–4 pm



### Information

GualalaArts.org  
Gualala Arts: 707-884-1138



Surrealism, meta-realism, beyond-realism, these all mean about the same thing. This school of art began in the early 20th century. The idea is to start with reality, look into our minds and go beyond it. In concrete terms, the objective is to take visual images beyond reality, maybe into the subconscious mind, maybe to a possible future.

Salvador Dali created surreal art with a flair and a curly mustache. Rene Magritte did it with a bowler hat and a pipe. Several contemporary artists produced the surrealist art shown here using only two dimensions. In the exhibit, visitors may see two, three, or even more dimensions.

Co-curator/painter Bruce Jones, one of the artists on display in this exhibit, is fascinated with the way our brains use clues of shape and texture to figure out what we are seeing. He explores patterns of these clues in his paintings, drawings and sculptures.

His subject matter is varied: landscapes, seascapes, people, florals, glass, rusty equipment, practically anything with interesting colors or textures. Most of his painting is done on location, resulting in thorough involvement with local "Plein Air Painting" and "Life Drawing" groups.

Images: Artist / co-curator of *Surrealism*, Bruce Jones; two collaborative works by artists Jim Vickery, PT Nunn, Arna Means, and Bruce Jones.

## Barbara Sapienza Painting & Susan Shaddick Sculpture & Clay

### Barbara Sapienza

For Barbara Sapienza, creating a painting is about movement that communicates a deeper understanding for the viewer.



She says, "Each brush stroke is an expression of being in the present moment." One stroke informs the next until the final product appears, an image that bonds the viewer and artist in a single experience.

Sapienza strives through her use of vivid color to emulate a feeling or spiritual expression. She attempts to lead the viewer to a spontaneous insight. She says she constantly searches for the place where form and formlessness interplay.

This is Sapienza's first show at the Dolphin, following numerous venues including Live Worms Gallery in San Francisco, Cowell Theater Bayfront Gallery at Fort Mason, The Blue Door Open Studio in Caunes Minervois, France and juried shows in various Sausalito sites.



### Susan Shaddick

The Japanese concept of wabi-sabi is a focus for the artist Susan Shaddick. The term developed from Buddhism and essentially states that nothing is perfect, nothing is complete and nothing is permanent. As a long-time student

of meditation and an artist who has worked with natural materials and minimal processes, Susan feels that this concept describes her work most clearly.

The work in this exhibition will include sculptural and functional forms using clay, kelp and other materials that are sustainable or recyclable.

Susan has a Bachelor's in Art from California State University, Sacramento, where she studied with Joseph Raffael, Bill Allan and Carlos Villa. She received a Master's in Art from San Jose State University, where she studied with Sam Richardson, Leigh Hyams and Rupert Garcia. Her work there was in sculpture and performance art.

February 6 – 29

### Opening Reception:

Saturday, February 6, 5–7 pm  
Free

### The Dolphin Gallery

39225 Highway 1, Gualala  
707-884-3896

Thursday–Monday, 10 am–4 pm  
Closed Tuesday and Wednesday



Barbara Sapienza: above, *Myanmar*, oil on canvas, 30 in. x 30 in.; left, *Half Dome*, oil on canvas, 30 in x30 in.



Susan Shaddick sculpture and clay art above and left.

Gualala Arts Annual  
Members' Meeting &  
Volunteer Recognition

## Hearts for the Arts

Wednesday, February 24  
3-5 pm  
Gualala Arts Center  
Coleman Auditorium

Join us in celebration with  
bubbly champagne,  
appetizers and desserts  
compliments of Surf Market



**Family and Friends are  
invited! Please RSVP.  
Contact Susan  
707-884-1138 or  
Info@GualalaArts.org**

**Information**  
GualalaArts.org  
Gualala Arts: 707-884-1138



## Annual Member's Meeting & Volunteer Recognition

It's time to celebrate! In this annual meeting and festive event, we'll vote, acknowledge, toast, and thank all those who were such a lively part of the activities at Gualala Arts during 2015.

All Gualala Arts members are invited, and yes, *encouraged*, to attend and help us honor the many, many people it takes to keep our arts center vibrant. Family and friends are welcome!

Officers and Board Members will be elected. Nominations from the floor may be made prior to the voting. Only Gualala Arts members are eligible to make nominations and/or vote.

### Proposed Slate of Officers for 2016

President: Roland Stoughton  
First VP: Peggy Berryhill  
Treasurer: Don Krieger  
Co-Secretaries: Alan Grossman and Lynn Bailey

### Proposed New or 2nd Term Board Members

Richard Pfeifer, Rosemary Campiformio, Karen Hay, Barry Weiss, Sheralyn Kirby and Paula Power.

### Returning Board Members

Chris Beach, Teri Cooper, Andrea A. Lunsford, and Alfredo Orozco

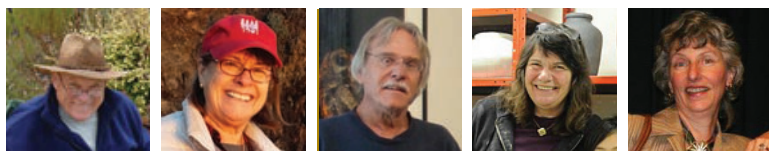
### Retiring Board Members

Rich Schimbor and Phil Atkins



There is a wide variety of terms that can be used to define “friend.” Here at Gualala Arts we consider our volunteers our friends on so many levels. They are our associates, our acquaintances, our key contacts, our colleagues, our workmates, our partners and of course our “VFF” —Volunteer Friends Forever.

### Reflections on Our Volunteer Friends Forever ... “VFF”



Left to right: Bruce Jones, Kristin Carnes, Doric Jemison-Ball, Jane Head, Sabina Walla.  
Camera shy: Linda Eastman, Marion & Paul Fishman, Bill & Karen Hay

These valued individuals come together in teams in order to ensure the purpose of Gualala Arts remains an on-going reality. Sometimes they join in teams of only two, other times the teams can number in the hundreds. Each and every volunteer brings with them their individual uniqueness resulting from life’s perspective, beliefs, and experience—all focused on the expression and sharing of Art in its many forms.

On any given day, you can see a wide variety of volunteers relating and working with each other using an assortment of different approaches:

- Some have known each other for years and relate with ease and almost a shorthand of language. Others have just met and are working together for the first time as they develop the rhythms of their communication.
- Some folks are natural leaders while others contribute their best when working within another’s framework.
- There are those who are anxious to get the projects moving right away, while others may be pushing back to invest in a little more pre-planning.
- When the inevitable times arise that emotions surface, ranging from pure joy to absolute frustration, the array of skills our volunteers use to arrive at resolution is as unique as each of the individuals involved.

As unique individuals, with similar human traits, our team shares the united purpose of serving and supporting the overall mission of Gualala Arts—to *promote public interest and participation in the arts*. To this end, we are grateful to our entire volunteer team and are proud to call them our **VFFs**.

### 2016 Volunteer Awards

This past year dictated the need to expand our volunteer awards. We have chosen to honor two separate Volunteers of the Year for 2015, each outstanding in their own right.

#### Volunteers of the Year

Bruce Jones and Kristin Carnes

#### Heartbeat Awards

Linda Eastman  
Marion & Paul Fishman  
Bill & Karen Hay

#### Volunteer Group of the Year

The Clay Studio Team:  
Doric Jemison-Ball  
Jane Head  
Sabina Walla

#### Business of the Year

North Coast Brewery



#### New Award

In addition to the above awards, we have introduced a new recognition category to honor those who have provided decades of volunteer contributions to Gualala Arts. This award will be given out periodically over time:

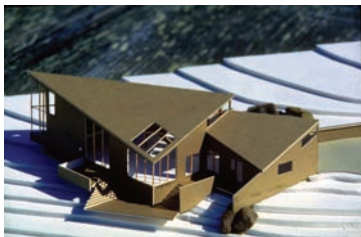
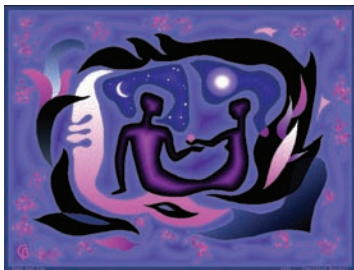
#### Volunteers of the Century

Wilma and Ben Klagenberg



## Remembering Charlotte Burnett (1919 - 2015)

**Celebration of Life**  
**Saturday, March 5, 1 pm**  
**Gualala Arts Center**  
**Coleman Auditorium**



### Information

GualalaArts.org  
Gualala Arts: 707-884-1138

Artwork above by Charlotte  
Burnett: *Adam and Eve*, 1992;  
*Design for Sea Ranch House*, 1985.  
Photos above right: Charlotte on  
vacation in 1963, plein air painting,  
and at party in 1950.



**Charlotte Burnett, long time Sea Ranch resident, and one of the senior founders of the Gualala Arts Center,** died peacefully of natural causes on December 17, 2015 in Alameda, California. Charlotte was 96 years old. Her husband Rex Burnett passed away in May of 2004. The public is invited to join in the celebration of Charlotte's life on Saturday, March 5, 2016 at 1:00 pm. at the Gualala Arts Center Coleman Auditorium.

Along with her husband Rex, Charlotte started the annual Swiss Trek tour of Switzerland which served as a fundraiser for the Gualala Arts Center building. As president of the Gualala Arts Association, Charlotte solicited the donation of land for the Arts Center from Ollie Edmunds.

Charlotte's artistic career included architectural design, as well as technical and graphic art for the aerospace industry. Charlotte was an accomplished painter and computer digital artist whose works were inspired by her many travels and by her own imagination.



**2015 proved to be another wonder year at Gualala Arts** with stellar presentations of art, music, performances, classes, workshops and very festive events. From its beginnings in 1961, the Arts Center has grown and evolved into a focal center of the coastal community bringing together artists, educators, musicians, dancers, indigenous groups, theatrical performers, and thought leaders from our local community and around the world to delight, inspire, teach and enthrall. These highlights represent a few of the past year's 100+ activities.

**Monthly art exhibits at Gualala Arts Center and its in-town Dolphin Gallery** were once again the foundation for Gualala Arts mission to "promote public interest and participation in the arts." Ongoing classes, groups with diverse interests, and a multitude of workshops continued to add variety and depth to the offerings, as did our dynamic Local Eyes and Gualala Arts Theater presentations.

### Chamber Music Series

The Chamber Music Concert Series delighted audiences with its continuing 2014-15 Season of spring concerts, followed by its 13th Annual Summer Chamber Music Weekend in July that presented the inspired performances of pianist Roy Bogas and outstanding musicians from the San Francisco Symphony. Two fall concerts in October and November kicked off the 2015-2016 Season.

### Global Harmony Series

Global Harmony presented excellent programming from far and wide. In January, it

sponsored local ensemble BAKU with its unique and improvised Jafro-Fusion synthesis of jazz, Afro beat, and Middle Eastern rhythms. In June, its Artists in Residence program welcomed Chilean artists Pablo McClure and Soledad Leonicio for the entire month. These talented artists shared their culture through art, workshops and special events that showcased their Chilean inspirations.

In July, the **Global Harmony Summer Adventure Camp** for youth (first through eighth grade) chose the Ocean for its theme. Classes revolved around "that wide body of water that connects everyone." Also presented in July was the Vox Aurea Finnish Youth Choir. In this concert, the audience experienced the rough shamanistic singing style of the Sami people (the only indigenous people left in EU area), as well as traditional and modern music—the modern especially composed by the choir's previous conductor, Pekka Kostiainen. October brought the Native Arts Expo, with Native American artists showcasing their talents and

## 2015: What a Year It Was!



Chamber Music: Zodiac Trio



Ceramic art by Chilean artist Soledad Leonicio



Global Harmony Summer Adventure Camp



Vox Aurea Finnish Youth Choir

sharing a broad scope of artistic expression, including the struggles they face as modern native peoples and professionals.

### Whale and Jazz Festival



The Twelfth Annual April-to-May festival celebrated Dave Brubeck as part of the line up, with special concerts in May and June to honor his musical genius. As usual, this highly regarded festival presented inspired jazz, art works, whale education, jazz films, poetry and the annual Chowder Challenge and tasting. Venues included wineries, restaurants, the restored Arena Theater, and inns from Timber Cove to Point Arena, as well as the Arts Center.

### Fine Arts Fairs

Gualala Arts presented its Eighth Annual Fine Arts Fair the weekend of May 23 and 24. This Memorial Weekend fair kicked off another summer fair for visitors and artists alike with jewelry, mixed media, ceramics, photography, hand-painted silk, art glass and woodworking, as well as handmade pizzas from the wood-fired oven and a variety of delicious foods from local vendors. The August Art in

the Redwoods Festival, begun at the Gualala Community Center in 1961, continued its attraction for the hundreds of participants who joined in the festivities to feast, to play, to enjoy the ambience and buy art and one-of-a-kind specialty gifts. The Top Hat Dinner, held on Thursday as a prelude to Art in the Redwoods, featured local food & wine loving prepared by Gualala Arts volunteers. The end of November brought back the Festival of Trees, transforming the entire Arts Center into mid-19th century Gualala. Holiday music, food, handcrafted arts, a Christmas tree that reached to the ceiling, and Santa delighted all who came.

### Wine Tasting & Auction

This 31st Annual Wine Tasting & Auction, held on Mother's Day in conjunction with the local Soroptimist's Annual Architectural Tour, was once again the premier wine event on the Sonoma/Mendocino coast. 25 award-winning wineries poured premium wines, with more than 40 wine-related auction lots available in the silent auction.

### July Auto Show

The Seventh Annual Gualala Arts Auto Show in July filled the redwoods surrounding the Arts Center with nostalgia, beautifully restored classic cars, and the sound and fury of dragsters, hot rods, customs and modifieds. It was accompanied by the Automobilia Fine Art Exhibit



of photographs, paintings, sculptures, die cast car collections, dioramas, and scale model cars. Returning with the Auto Show for its fifth year, the "Summernationals" Pinewood Derby was once again run on Gualala Arts' state-of-the-art aluminum racetrack donated by local businesses.

### The World Famous Glenn Miller Orchestra

Thanks to a serendipitous scheduling arrangement and the efforts of Fred Adler of KTDE 100.5 FM, Gualala Arts had the good fortune to offer an August trip down memory lane with the World Famous Glenn Miller Orchestra. Under the direction of Nick Hilscher, the concert included the Miller classics "Tuxedo Junction," and "Moonlight Serenade." It was presented in association with, and partially underwritten by North Coast Brewing Company.

### Thank you

Gualala Arts thanks each and every one of its artists, volunteers, visitors, donors, sponsors, members, performers, instructors, and the community for the involvement and participation that support the Arts Center and make it thrive.



**Bryn Harris performs her first one-woman show** at Gualala Arts, bringing in a musical Valentine's Eve with Broadway musicals, jazz classics, pop and R&B.

The first of two acts will focus on Broadway songs and jazz, with Bryn accompanied by Don Krieger on piano. Duets will include one with Tony Ariola and another with her father, Wayne Harris.

The Second Act is filled with rhythm and blues and popular favorites, including the music of Adele. Accompanists in this act will be Wayne Harris on guitar and harmonica, Jeremiah Mayer on drums and percussion.

Bryn will also showcase tap dancers from the Point Arena class she teaches. Wine and beer will be on sale, as well as deserts made by local students, with proceeds going to Point Arena High School.

A PAHS 2000 alumna, Bryn studied performing arts at SRJC, Pacific Conservatory of the Performing Arts and at University of North Carolina School of the Arts, where she received a BFA cum laude in Directing in 2010. Her professional career as a performer, choreographer, and director has taken around the country. Upon her return to the Mendonoma Coast, she has performed, choreographed, directed and produced numerous shows. She was also co-director, set and lighting designer, and performed the memorable Schmendiman for the successful Steve Martin comedy Picasso at the Lapin Agile at the Arena Theater.

Bryn looks forward to sharing this bewitching, bothersome and sometimes bewildering holiday named after St. Valentine.

LOCAL EYES  
PRESENTS

## **Bewitched, Bothered and Bewildered**

**Bryn's Valentine's Eve Cabaret**

**Saturday, February 13, 7:30 pm**  
**Coleman Auditorium**

\$15 Advance, adults / 13 and up  
\$5 More day of performance



### **Tickets Available**

The Dolphin Gallery  
Gualala Arts Center  
BrownPaperTickets.com or  
1-800-838-3006

### **Information**

GualalaArts.org  
Gualala Arts: 707-884-1138

.....  
Bryn Harris in performance.



GUALALA ARTS  
CHAMBER MUSIC  
PRESENTS

## **Zlatomir Fung: Solo Cello**

**Sunday, February 14, 4 pm**  
**Coleman Auditorium**

\$25 Advance

\$5 More day of performance  
17 & under free with adult

### **Tickets Available**

The Dolphin Gallery  
Gualala Arts Center  
BrownPaperTickets.com or  
1-800-838-3006

### **Information**

GualalaArts.org  
Gualala Arts: 707-884-1138



### **Sixteen-year old cellist Zlatomir Fung won gold medals**

at the 2015 Johansen Competition, the 2014 Stulberg String Competition and the 29th Irving Klein Competition, as well as a long list of other prestigious awards.

Fung, at 12, had already been featured on NPR's "From the Top," was studying with Emmanuel Feldman at the New England Conservatory, and played in Boston area youth symphonies and chamber ensembles. It was at 13 he knew the cello would be his life.

An avid chamber music player, Fung has performed with the Jupiter Orchestra Chamber Players, the Walden Chamber Players and the Arneis Quartet. Zlatomir has studied at the Heifetz International Music Institute, the Indiana Summer Strings Academy, Luzerne Music Center, Greenwood Music Camp, MusicAlp and the Aspen Music Festival and School.

He has been selected as a national 2016 Young Arts classical music winner, and is also one of the Fellows for the Piatigorsky Cello Festival in May 2016. He is completing his senior year of high school through the distance-learning Oak Meadow School in Vermont.

### **Encore Dinner Program**

The Chamber Concert Series continues its collaborative Encore Dinner Program. Many local restaurants offer 10% off the price of a post-concert meal (excluding alcohol) when presented with concert ticket stubs. Participating restaurants include Bones Roadhouse, the Gualala Hotel, Mariachi's, the Sandbar, and The Sea Ranch Lodge.



GUALALA ARTS  
THEATER PRESENTS

## Murder in Gualala

**Dinner Mystery Play  
by Dennis Carter**

**Solve a local mystery while you dine! Put the clues together!** Witness a thrilling story of crime with lots of twists and turns. Alma Faith, a lifelong resident of Gualala has just passed away after a long and eventful life—apparently from natural causes. She is survived by only two grand daughters who have a long history of enmity, one living in Gualala and one living in San Francisco.

As Alma's family and friends convene at Gualala Arts Center for her memorial service, a new Sea Rancher and former LA crime reporter, begins to ask innocent questions. People quickly conclude that the cause of Alma's death might have been more complicated than it originally seemed.

This original play is set in the fair town of Gualala and unfolds in four scenes, enacted partly on stage and partly within the audience, as murder, adultery, passion and an ill-gotten family fortune emerge as possible motives for lethal crime.

In between scenes, dinner courses are served. While enjoying each course, the audience will have the chance to join the action by sharing their mystery solving skills and suggesting motive, villains and heroes to the cast.

The actors proceed to the next scene, and so on, until the very end ... when?? ... just perhaps ... the insightful audience has discovered the truth of the mystery!

Directed by Karen Serratoni, the cast includes Francie Angwin, Lynne Atkins, Phil Atkins, Diane Boeke, Jan Carter, Annan Paterson, Rich Schimbor, David Skibbins, and Sabina Walla. And, of course, the audience.

**Saturday, February 27, 5 pm  
Coleman Auditorium**

\$50 Advance, includes dinner  
\$5 More day of performance,  
if available

**Reservations requested  
by February 22.**



### **Tickets Available**

The Dolphin Gallery  
Gualala Arts Center  
BrownPaperTickets.com or  
1-800-838-3006

### **Information**

GualalaArts.org  
Gualala Arts: 707-884-1138

Foyer and no-host bar open  
at 5 pm. Dinner and mystery play  
begin at 6 pm.

## How to Register

### Sign-up in person at the Gualala Arts Center

Monday–Friday: 10 am–4 pm  
Weekends: Noon–4 pm

### Sign-up by phone

707-884-1138

Classes must be paid in full at sign-up. Visa, MasterCard and Discover accepted. Payments can be refunded (minus a \$25 non-refundable fee) until the "Register by" date. After that date, no refunds will be provided. If the class does not fill, you will receive a full refund.

### Information:

[GualalaArts.org](http://GualalaArts.org) or 707-884-1138

## Ongoing Classes

### CLAY STUDIO

Doric Jemison-Ball  
Monday–Friday, 10 am–4 pm

### MARTIAL ARTS

with Lini Lieberman-Erich  
Mondays & Wednesdays  
6–7:30 pm

### DRAWING & PAINTING

with Genny Wilson  
Tuesdays & Thursdays  
1:30–3:30 pm

### LIFE DRAWING

Wednesdays 2–5 pm

### AEROBICS

with Debbie Langwell Mondays,  
Wednesdays, Fridays & Saturdays  
8–9:15 am

### TAI CHI

with Justine Rosenthal  
Mondays 3–4:30 pm

## FEBRUARY



Thursdays 2/18–3/10, 4-week workshop,  
9:30 am–4 pm

### *Beginning Quilting* with Kaylynn Oleson and Jan Carter

Learn the basics of quilting or sharpen your skills. Take one or all of the four classes.

## MARCH



Tuesdays 3/8–4/12, 6-week workshop,  
5:30–7:30 pm

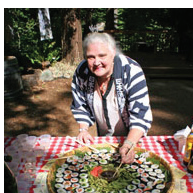
### *Life Stories: Memoir 2016* with Ida Egli

Learn how to approach your stories, get them on paper, and into finished form.



Thursday–Saturday, 3/10–12, 10 am–2 pm  
*Abstracting and Simplifying Your Paintings*  
with Sandy Ostrau

Techniques in reductive composing, color harmonies and textures.



Saturday, 3/12, 10 am–2 pm  
*Roll Your Own Sushi III–Beginners*  
with Laura Leigh

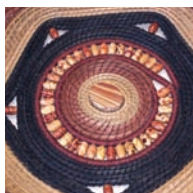
Learn how easy it is to make sushi rolls: cooking sushi rice, prep and rolling of maki.



Saturday–Monday, 3/18–20, times varie  
*Yoga in the Redwoods* with Janet McCloud  
Multiple class options – all or part

Explore all areas of the practice of B.K.S. Iyengar-style yoga. All levels welcome.

## APRIL



Saturday & Sunday, 4/2 & 3, 10 am–4 pm  
*Pine Needle Basket Making*

with Randall Agee and Bea Acosta

Learn to make beautiful baskets from pine needles, coiling, weave swirling, and more.

More workshops, as well as registration dates, fees, and materials lists and info at [GualalaArts.org](http://GualalaArts.org).



## Call to Artists

Opportunities for artists, performers, and stage crew:

**Auditions for Gualala Arts Theater musical performance of *La Cage aux Folles*:** Saturday, February 20, 6–8 pm and Sunday, February 21, 1–3 pm; Callbacks – Casting Announcement: Sunday, February 28, 2 pm. Production crew also needed. Info: Sophia Mitchell: sophiatheater@gmail.com or (619) 559-2460 GualalaArts.org, 707-884-1138

**Beyond the Selfie exhibition,** opens April 1, call to artist entries deadline: March 18.

Gualala Arts

## Book Club

**February 2016 selection for discussion:**  
*Euphoria* by Lily King

Call if you plan to attend:  
**Wednesday, Feb 3 at 10 am**  
at home of Pam Todd. Info: Pam Todd, 707-684-9342

**Thursday, Feb. 18, 1:30 pm**  
at Gualala Country Inn. Info: Paula Gordon, 707-884-3823

Gualala Arts

## Readers Theater

**Tuesday, February 2, 7 pm**  
Readers Theater will read Shakespeare's *Othello* and a contemporary parody, *Othello*, and the Boy Band Venice by Tim Kochenderfer. Gualala Arts Center Conference Room. Info: Nancy Padgett, 707-3258.

## Bridge the Gap ... and Beyond Update: Redwood Grove Event Area Fundraiser Update

The Stone Foundation members have arrived and work has begun on our newest renovation at Gualala Arts—The Redwood Grove Event Area. Since our kick-off event in December, your response has been awe-inspiring. Contributions from our



members continue to be received creating an excellent base to continue building the fund. In addition, designated donations and commitments have been made to secure the naming rights of the pergola, a portion of the kitchen area and one of the walkways.

We are so very grateful for your continued interest and support of this project and look forward, not only its progress throughout the year, but to spending time with all of you in this newly refurbished area. We'll keep you posted as the project progresses and invite you to stop by now and again to observe the process first hand.

## Bridge the Gap Thanks A "Thank You" for Your Support

A great big **thank you** to all who have contributed to Gualala Arts for your on-going generosity in this year's **Annual Fund Drive ... Bridge the Gap**. This annual drive and each of your individual donations, provide the necessary income to fill the gap between Gualala Art's on-going event and endowment income and the bottom line funding needed to allow us to operate. It enables us to deliver on our mission "**to promote public interest and participation in the arts since 1961.**" We are grateful to each and every one of our ±1,000 member Gualala Arts family for your contributions, and appreciate the support you continually show in so many different ways.

Thank you,

Gualala Arts Board of Directors & Staff

## Coming in March!

### Saturday, Mar. 5

Exhibit Opening Reception  
*Bruce Jones Drawings & Paintings*  
and *Dean Thompson Painted*  
*Furniture & Sculpture*  
Dolphin Gallery

### Tuesdays, Mar 8-Apr. 10

Workshop: *Life Stories: Memoir*  
with instructor Ida Egli

### Thursday-Saturday, Mar. 10-12

Workshop: *Abstracting and*  
*Simplifying Your Paintings* with  
instructor Sandy Ostrau

### Wednesday, Mar. 11

Exhibit Opening Reception  
*Arts in the Schools*  
Gualala Arts Center

### Saturday, Mar. 12

Workshop: *Roll Your Own Sushi*  
with instructor Laura Leigh

### Sunday, Mar. 13

*Artists at Albatross Reach,*  
Chamber Music Series

## Dates of Note

### Whale and Jazz Festival starts in April

Multiple venues and dates  
.....

### Fine Arts Fair

Saturday & Sunday, May 28 & 29  
.....

### Automobilia

Opening Reception: Friday, July 1, 5-7 pm  
.....

### Global Harmony Summer Adventure Camp

July 5-8 & July 12-15  
Tues-Fri, 9:30 am-12:30 pm  
.....

### Art in the Redwoods Festival 2016

Sat & Sun, August 13 & 14, 10 am-4 pm



### Gualala Arts Center

46501 Old State Highway  
PO Box 244  
Gualala, CA 95445  
.....

707-884-1138  
info@GualalaArts.org  
GualalaArts.org  
.....

### Arts Center Hours

Weekdays, 10 am-4 pm  
Weekends, Noon-4 pm

U.S. Post Paid  
Nonprofit Org.  
Permit #1  
Gualala, CA  
95445