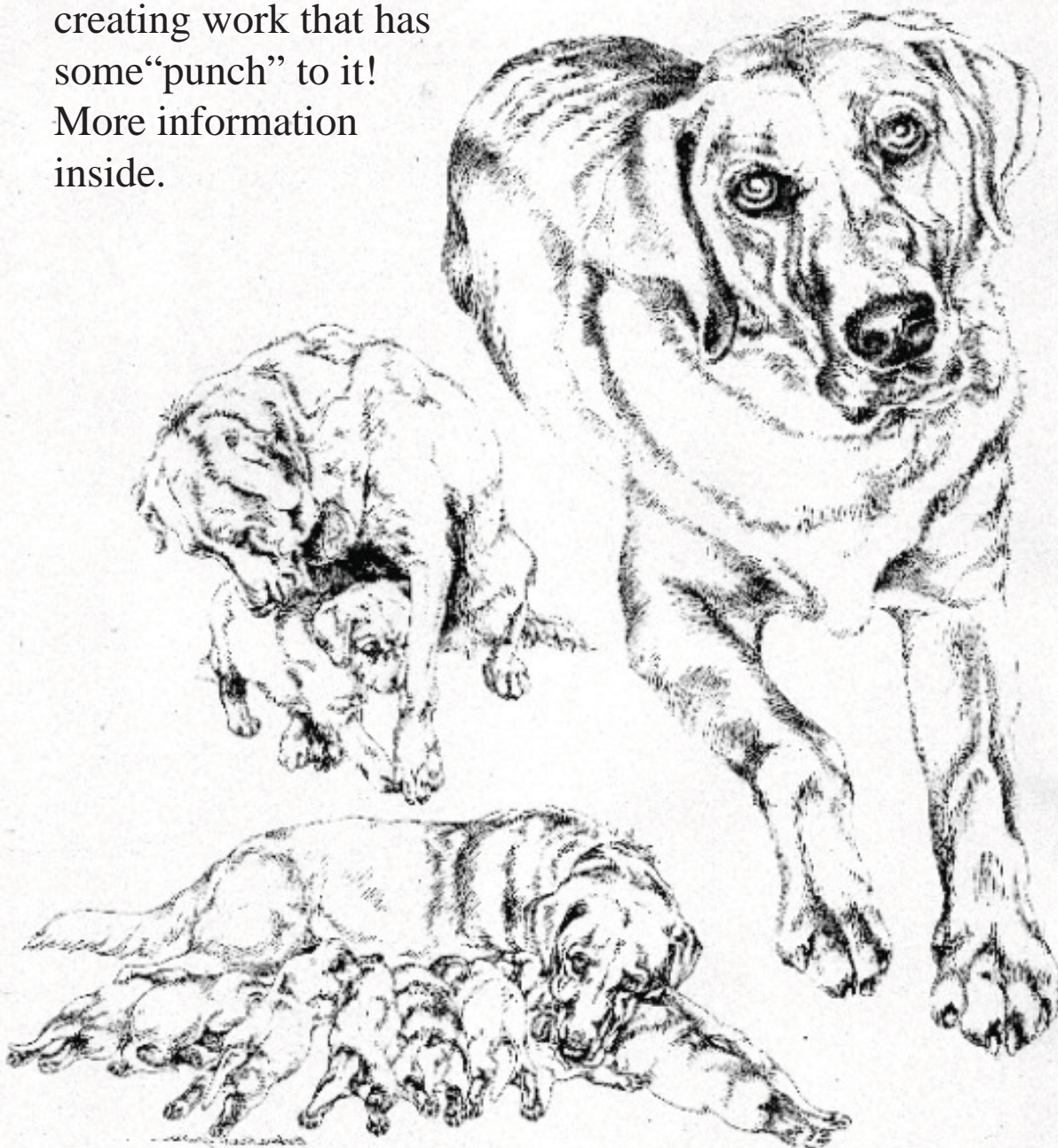


Join artist  
Barbara Krans Jenkins  
and learn about  
combining pen & ink  
with colored pencil,  
creating work that has  
some “punch” to it!  
More information  
inside.



# Gualala Arts

July

2008 Issue

# Workshops



### **Painting With Colored Pencils**

**Instructor:** Barbara Krans Jenkins

**Phone:** (330) 836-5850

**When:** Wednesday – Saturday, July 23-26

**Time:** 10- 5:00

**Tuition:** Members \$300 Non-Members \$330

**Register by:** July 9

**Materials Fee:** \$25

**Materials List:** Yes

Come join Barbara and learn about combining pen & ink with colored pencil, creating work that has some "punch" to it. There will be mini-demonstrations of several popular colored pencil techniques (such as "Layering", "Grisaille" & "Burnishing") and many tips on design and composition.



### **Cooking and Tasting Wholesome Foods**

**Instructors:** Naomi Schwartz and Caren Cramer

**Phone:** (707) 884-3393

**When:** Wednesdays September 10, 17, 24

**Time:** 4- 6:00

**Tuition:** Members \$150 Non-members \$165

A series of three classes exploring nourishing foods that taste good and are healthy for you. Each class will begin with information by Caren Cramer, a nutritional therapist., followed by cooking demonstrations and tastings by Naomi Schwartz, an accredited professional chef. There will be opportunities for hands on cooking and for you to suggest foods you would like to learn to cook.

### **Learn to Knit**

**Instructor:** Lu Vickery

**Phone:** (707) 882-2792

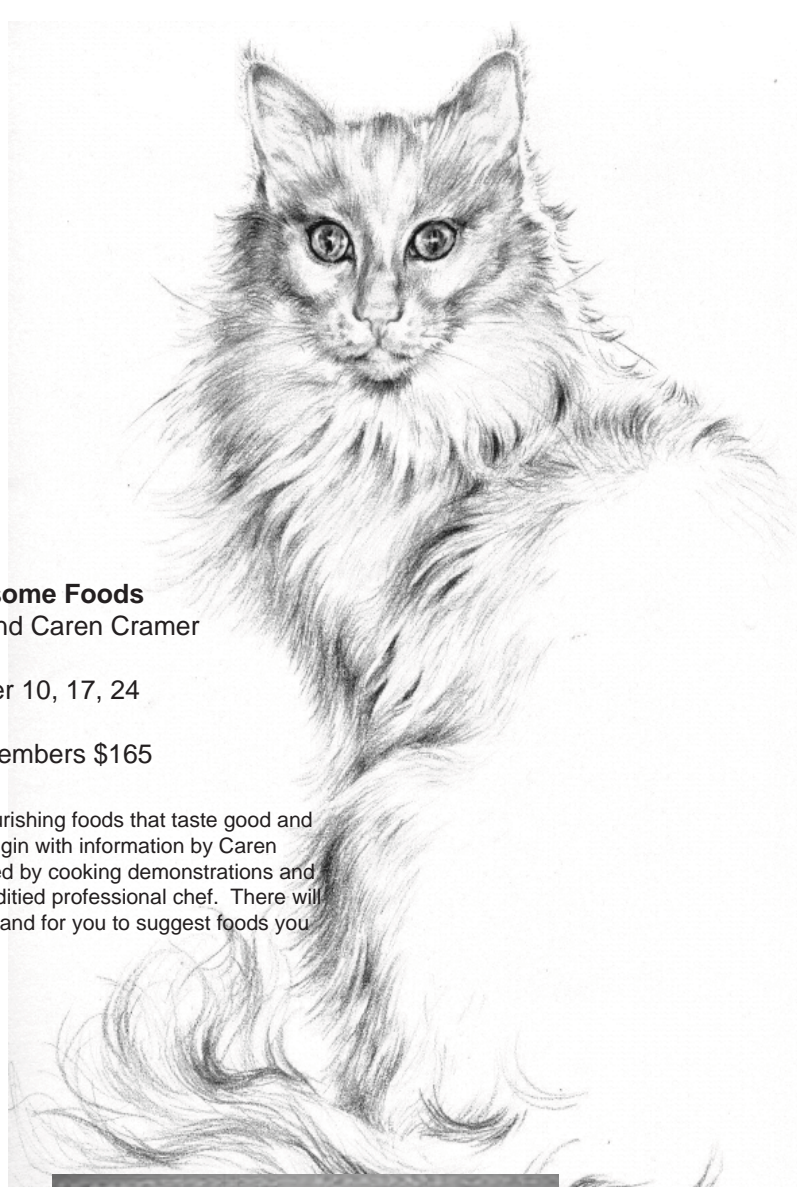
**When:** Saturday & Sunday, September 13-14

**Time:** 10- 4:00

**Tuition:** Members \$30 Non-Members \$40

**Materials List:** Yes

This workshop is for those who would like to learn the basics of knitting. You will learn the basic skills of how to cast on, knit, purl, and bind off your piece. Once these basic skills are learned, you will begin making your own simple creations.



### **Open Thread Bar**

**Instructor:** Cindy Needham

**When:** Friday, September 19

**Time:** 9- 12:00

**Tuition:** Members GA & PPQG \$20

Member GA or PPQG \$25

Non-members \$30

**Register by:** August 15

**Materials List:** Yes

This workshop provides students with instruction and hands-on experimentation with specialty threads. We will have a large selection of threads available for students to use. This is a rare opportunity for Quilters to experiment with the guidance of a professional.

## Watercolor & More: Pencil, Crayon, Ink, and Collage!

Instructor: Karen Bowers

Phone: (707) 937-3163

When: Saturday & Sunday, September 27-28

Time: 9:30 – 4:30

Tuition: Members \$165 Non-members \$180

Register by: Sept. 13

Materials List: Yes

Mix it up with watercolors, water soluble pencils and crayons, waterproof ink, tissue paper collage, and other ingredients in this enriching painting workshop. Expand and explore all the painting possibilities with noted artist, Karen Bowers.



## Free Motion Machine Quilting

Instructor: Bonnie Toy

When: Monday & Tuesday, October 13-14

Time: 10-4:00

Tuition: Member GA & PPQG \$50

Member GA or PPQG \$65

Non-Member \$75

Register by: October 3

Materials List: Yes

This class will cover free-motion machine quilting basics including pinning a quilt sandwich, marking a quilt for machine quilting, and techniques for free motion machine quilting with no or little marking. Day 2 will allow sufficient time for practice.



## The Wonders of Watercolor

Instructor: Annie Murphy Springer

Phone: (707) 876-3211

When: Saturday & Sunday, November 1-2

Time: 10-5:00

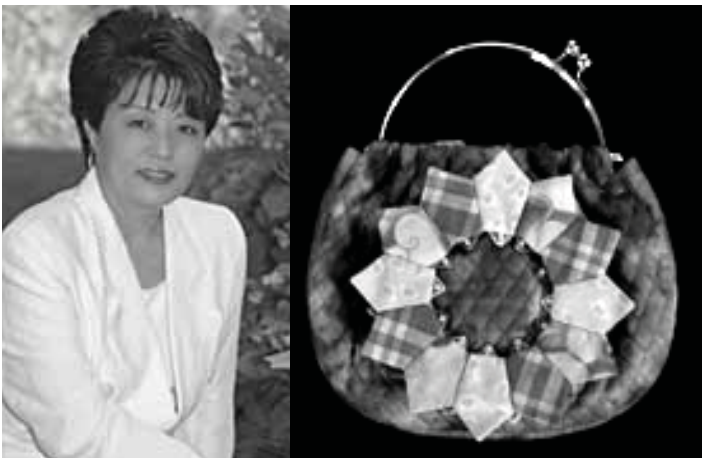
Tuition: Members \$140 Non-members \$155

Register by: Oct. 17

Materials Fee: \$10

Materials List: Yes

Learn and practice using freshness, spontaneity and simplicity in watercolor painting. You will create interesting and "frameable" art in just eight hours. This course will dispel the myths about how hard watercolor is and even advanced students, you will gain a new, fresh perspective.



## Fabric Folded Origami Flowers

Instructor: Rami Kim

When: Wed. & Thurs., November 19-20

Time: 10-4:00

Tuition: Member GA & PPQG \$120

Member GA or PPQG \$135

Non-member \$150

Register by: October 31

Materials List: Yes

Depending on the fabrics you choose, create oriental or contemporary 3 dimensional quilts. The designs are innovative quilt patterns inspired by Japanese sashiko and origami techniques.

## Workshops Coming in 2009

Look for Tai Chi with Ken Chase in April, Watercolor Portraits with Myrna Wacknov in June, Watercolors with Frank Webb in September, Jewelry Making with Precious Metal Clay with Mary Neur Lee in June, and much more!

### Walking on Clouds –Tai Chi Integral Practice

Instructor: Kenn Chase  
Phone: (415) 488-4213  
When: Saturday & Sunday, April 25-26  
Time: Sat. 9-6:00 & Sun. 10-12:00  
Tuition: Members \$85 Non-Members \$95  
Register by: April 19  
Materials: Comfortable Works Out Clothes

### Watercolor Portraits

Instructor: Myrna Wacknov  
Phone: (650) 574-3192  
When: Monday-Friday, June 22-26  
Time: 9-4:00  
Tuition: Member \$350 Non-Member \$385  
Register By: June 8  
Materials List: Yes

### Jewelry Making with Precious Metal Clay

Instructor: Mary Neur Lee  
Phone: (707) 545-6825  
When: Saturday, June 20, 2009  
Tuition: Members \$85 Non-Members \$95  
Register by: June 4  
Materials Fee: Approx. \$50 (depends on price of silver)

## On-Going CLASSES

All classes are at Gualala Arts Center unless indicated otherwise.  
Check out the [GualalaArts.org](http://GualalaArts.org) website for more details.

### Open Clay Studio

Mondays and Wednesdays  
10:00 a.m. - 2:30 p.m.  
Six Sessions \$100 / Single \$20 for members  
Jan Maria Chiappa, 884-3825  
Custom workshops available on request.

### Karate Classes for Children

Tuesdays, 4:15 p.m. - 5:15 p.m.  
Lini Lieberman-Erich, 785-2288

### Life Drawing

Wednesdays, 3:00 p.m. - 6:00 p.m.  
model is provided (\$5 fee) Tom Warnock, 785-3668

### Aerobics

Mondays, Wednesdays, Fridays, Saturdays at  
8:00 a.m.  
Debbie Langwell, 884-5021

### Workshop Registration, Application Fee and Payment

Register at Gualala Arts Center, Monday through Friday,  
9:00 a.m. to 4:00 p.m. or call (707) 884-1138.

We accept Visa and Mastercard.

Please call if you need directions or information on lodging.

Class must be paid in full at registration. Part of the class cost is a non-refundable \$15 fee. Classes are filled on a first come first served basis until all spaces are filled. All classes are subject to minimum and maximum enrollment. If the class does not fill, you will receive a full refund. Please check that your class has filled before the first meeting date.

If you would like to propose a workshop, please contact Gerda Randolph, [randolph@mcn.org](mailto:randolph@mcn.org).

All proposals are subject to Workshop Committee and Executive Director approval. Please download the guidelines, application form and contract from [GualalaArts.org](http://GualalaArts.org) for a:

- \* Workshop on a specific date,
- \* An on-going class, or
- \* Culinary Guild workshop.