

PPQG Quilt Challenge: "I Found it in the Library"

Burnett Gallery

Opening Reception: Saturday, March 8, 5 p.m.

Exhibit remains through April 6.



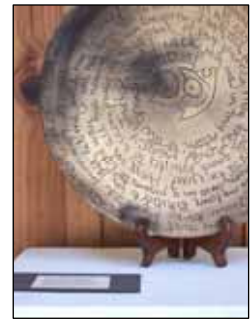
Quilters everywhere find the concept of a "quilt challenge" irresistible. For over a dozen years on our coast, annual Quilt Challenges have delighted residents and visitors with colorful, creative examples of the art and craft of quilting. Even before local quilters organized to form Pacific Piecemakers Quilt Guild in 1996, they sponsored annual challenge exhibits at Gualala Arts, each with a special theme or a required fabric or design element. Rules have always been simple, and there's no judge or jury: it's all about participation. PPQG's 2008 Challenge, "I Found it in the Library," invites quilters to interpret the theme as broadly or narrowly as they wish. Admission is free.

Garden of Poetry and Enchanted Forest Garden Installation

Elaine Jacob Foyer

Opening Reception: Saturday, March 8, 5 p.m.

Exhibit remains through April 6.



March will bring a "Garden of Poetry" exhibit to the Elaine Jacob Foyer, as the Garden Guild, poets, and artists collaborate to present an inspiring spring show. The foyer will sprout an actual garden installation, designed by DWF Interior and Exterior Design (for more details, see page 3.) On the walls and pedestals, there will be displays of poetry (most composed by local poets) and illustrated by artists. The poetry exhibit will be continue as part of the Whale and Jazz Festival, with California Poet Laureate Al Young, accompanied by bassist Dan Robbins, being featured on Thursday night, April 3, 7 p.m. This is the fourth year poets and artists have combined for a show of the art of words and the poetry of images. Admission is free.

JoAnne Abreu and Mel Gerst

Dolphin Gallery

Opening Reception: Saturday, March 1, 5 p.m.

Exhibit remains through April 2.



The Dolphin Gallery will have an exhibit featuring JoAnne Abreu, mixed media gourds, and Mel Gerst, photography, from the opening March 1, 5 to 7 p.m. through April 2. Please join the artists with complimentary wine and munchies. JoAnne Abreu uses gourds as a foundation, altering and enhancing the form with fiber coils and other media. Mel Gerst's challenge is to capture images we don't see even though they are right in front of our eyes, such as his recent study of how our sun interacts with the Pacific Ocean horizon. Admission is free.

Connections to the Universe

The Sea Ranch Lodge Front Gallery

Opening Reception: Thursday, March 20, 5 p.m.

Exhibit remains through May 11.

The Sea Ranch Lodge Front Gallery will have a free exhibit titled "Connections to the Universe" opening Thursday, March 20. Gualala Arts, which manages the Gallery, will feature artists Ralph and Larain Matheson, Tom Eckles, Susan Shaddick, and P.T. Nunn. A variety of media will be represented; paintings, drawings, photography, digital art, and sculpture. Admission is free.

