

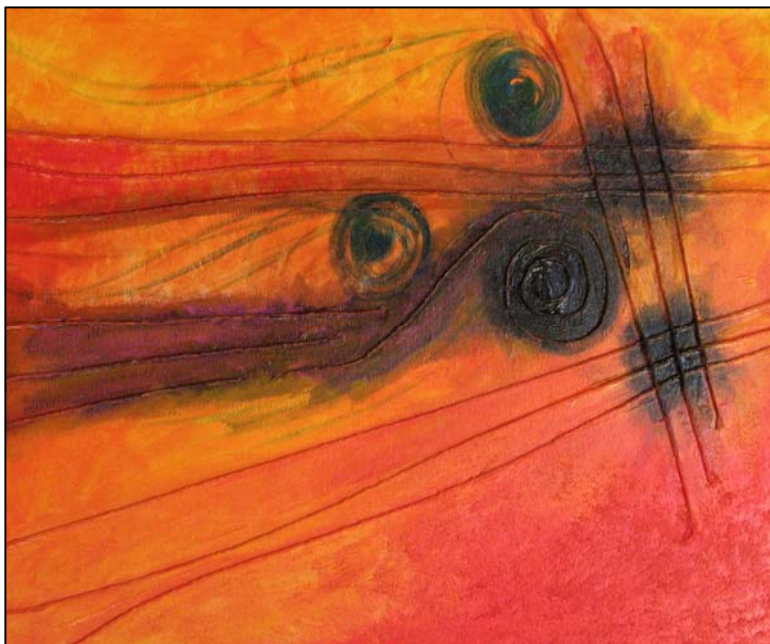
## The North Coast Artists' Guild Exhibit "Out of the Box" Opening Reception Saturday, January 12 from 5 – 7 p.m.

"Out of the Box" is the title given this year's annual exhibit by the North Coast Artists' Guild in the Burnett Gallery.

Prizes for the show, juried by Jill D'Alessandro and Werner Reichhold, will be announced at this time. Jill D'Alessandro, Associate Curator of Textiles, joined the Fine Arts Museums of San Francisco in 2002 and Werner Reichhold has been known as an installation-artist since 1960 and his steel sculptures, large size graphite drawings, and photographs have been exhibited in galleries and museums in Europe, North and South America, and in Japan.

The North Coast Artists' Guild was formed in 1997 as an affiliate of Gualala Arts to better serve working artists in the Mendocino and Sonoma coastal communities, from as far south as the Russian River to as far north as Little River. There are currently more than 82 members working in a large variety of media. The Guild members show in many Gualala Arts exhibits and also do the Studio Discovery Tour in September every year. More information is on their website [NorthCoastArtistsGuild.com](http://NorthCoastArtistsGuild.com).

The exhibit, curated by Tom Eckles, Sue Friedland, and Susan Shaddick, is on display through February 3.



### Sea Ranch Lodge Front Gallery

Opening Friday, January 18 from 5 - 7 p.m.

Featuring the considerable skills of local photographers this winter show offers something for everyone's taste with a wide range of subject matter and styles. The photographers are Bill Apton, Scott Chieffo, Martin Covington, Peter Dobbins, David Donaldson, Gus Feissel (whose photo is at the left), Jeanne Gadol, Paul Kozal, Bill Lange, Sharon Nickodem, Barbara Pratt, and Richard Skidmore. The exhibit is on display through March 16. Admission is free.

### Sally Jaffee at Dolphin Gallery

Opening Saturday, January 5 from 5 – 7 p.m.

The title of the show, "Expressions of a Potter's Life," only begins to explain the complicated works by Sally Jaffee being shown through Wednesday, January 30. These mixed media works made of clay tiles and vessels, with canvas and paper collage may seem simple in format but have endless possibilities. This series of houses and vessels is an expression of Jaffee's inner and outer environment as she finds herself now living next to a vineyard and overlooking a new set of mountains. Sally Jaffee studied ceramics in Seattle, Washington, with classes in Ohio and Mexico. She views her work as part of her sacred journey that she can share with others.

