

Elementary Schools Art Exhibit Opening Saturday, February 10 from 5 – 7 p.m.

Every year Gualala Arts celebrates and encourages art in the schools by sponsoring an exhibit of art by children in all area elementary schools, including home-schooled students. This is a huge show that includes samples of the best drawings, paintings, and collages, as well as examples of crafts and other innovative processes. Support the children by attending their exhibit opening to let them see how important their art is to you. Nancy Donald is the curator for this show which closes on Sunday, March 4.

Ring of Fire Metalworkers' Exhibit Opening Saturday, February 10, 5 – 7 p.m.



An exhibit in the Burnett Gallery will feature the work of two local artist blacksmiths during the month of February.

Jim Joyce's work will consist of sculpted metal human, animal, and bird forms. Sculpture sizes will vary from tabletop and wall mount to larger freestanding floor designs. Other original offerings will include interior lighting sconces of hand blown glass within delicate forged alloy cradles, and lighting fixtures combining steel, bronze, copper, and mica.

His home and garden sculpture work often melds stone or burl and metal. For specific room remodel work, such as kitchens, baths or dining rooms, Jim can fashion to one style for all the door and cabinetry hardware, lighting, brackets, curtain rods and holders, etc from any one of several alloys, including stainless steel, silicon bronze, brass and copper or mild steel. In recent years more people have begun to request Jim make personalized forged items to be used as gifts for special holiday, birthday, and anniversary celebrations, in a return to more lasting and personalized gifts.

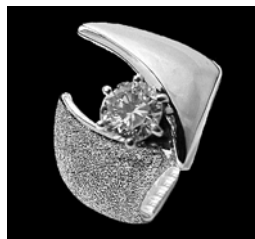
Gert Rasmussen who lives and works on the Mendocino coast, forges sculptures, candleholders, bowls, lamps, chairs and other items for the home and beyond. The show closes on March 4.



Walt Rush and Barbara Ward-Clark at the Dolphin Gallery Opening Saturday, February 3 from 5 – 7 p.m.

Under the title, "Bling went the string to my Heart," will be multi media works by Barbara Ward-Clark and jewelry for sweethearts by Walt Rush.

Walt Rush, a native of California, was born in San Francisco but transplanted to Ohio in the early 1950's. He returned to California in 2000 to create and design wearable works of art in jewelry along with precious metal sculptures. Walt and his wife, Susan, currently reside in Irish Beach.



Walt has a variety of techniques, which he uses from hand fabricating to forging, carving waxes, and casting in various materials to give his jewelry an "organic look." He works in yellow and white gold in many karats, along with platinum and silver. He enjoys creating one-of-a-kind pieces but all of his multiple pieces are handmade. One of the things he enjoys is having more time to use the creative side, which he never had the time to do as the owner of a retail store. He used to do sculptures in steel, brass and copper, but now he does them in precious metals like gold and silver with precious gemstones.

Walt firmly believes that "jewelry should be an attribute to the human body as a painting is to a room or a sculpture is to that special place in a home, building, or yard. My works-of-art in jewelry or treasured precious metal sculptures are for the discerning in taste."

Walt is now offering his expertise to customers in the Gualala and Fort Bragg area who would like to have a custom-designed piece of jewelry or if they have a special piece of jewelry, beads, eyeglasses, or antiques in need of repair. He is at the Dolphin Gallery in Gualala every Thursday from 10 a.m. to 1:30 pm. For more of Walt's jewelry, services & show schedule visit his web site at rushstudio.com



Don't miss seeing Barbara Ward-Clark's collages!