

More information on these events inside ...

- October 1-November 2:** Beth Seaward (silk paintings/watercolors) and Mercedes Romo (mosaics) at the Dolphin Gallery.
- October 7, 8, 9:** Horton Foote's "Carpet Bagger's Children," performed by Santa Fe Theater Touring Group.
- October 8:** Summer Saturday Art Fest at Sundstrom Mall in downtown Gualala.
- October 8-November 6:** Robert Holmes and Jerry Erickson (mixed media).
- October 14:** Sea Tones Entertainment presents Laurie Lewis, bluegrass fiddle.
- October 16:** Gualala Arts Chamber Music Series presents Marta Felcman, pianist.
- October 24:** Reading by Creative Writing Contest winners.
- October 29:** Local Eyes presents Boonville Big Band (dancing, costumes encouraged).
- October 29:** Second Hand Sale and Recycle Your Art. Quality used goods for sale.

Coming next month ...

- November 5-19:** Grace McMaster (watercolor) & Walt Rush (silver) at the Dolphin Gallery.
- November 6:** Two short operas, "The Bear—Extravaganza in One Act" & "Doctor Miracle," performed by the Mendocino Chamber Opera.
- November 7:** Gualala Arts Lecture Series presents Carole McQuarrie: "Chile: Its Story and Scenic Wonders."
- November 10:** Oregon Shakespeare Actors Perform.
- November 12-December 4:** Pacific Piecemakers Quilt Guild's Holiday Show and "Click!...and Comment," a members' show.
- November 13:** Gualala Arts Chamber Music Series presents Roy Bogas, pianist.
- November 19:** Christmas on the Coast.
- November 24-December 24:** Dolphin Gallery Holiday Boutique.

GIANT

Recycle Your Art & SECOND-HAND SALE

? furniture	ware	? appliances
? artwork	? books	? tools
? kitchen-	? toys	? electronics

**Saturday, October 29
9 to 11 am**

Bring your tax-deductible, quality used items
October 10-28 to the Arts Center,
or call 884-1138 for pick-up of large items.



October 2005
News & Events of
Gualala Arts

Promoting public interest and participation
in the arts in our community since 1961.

U.S. Postage Paid
Nonprofit Org.
Permit #1
Gualala, CA
95445

Goodbye, everyone. It's been great. I'll miss you! —Diana

Sketches

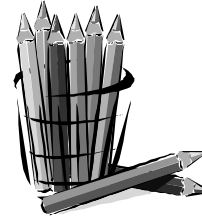
Printed on recycled paper

46501 Gualala Road
PO Box 244
Gualala, CA 95445

707-884-1138
info@GualalaArts.org

Gualala Arts Center is open:
9 a.m.—4 p.m. weekdays
noon—4 p.m. weekends

Get up-to-date
information
on our website:
GualalaArts.org



Sketches

Gualala Arts News • October 2005

Two Exciting Live Music Acts this Month at Gualala Arts Center!

Laurie Lewis, Bluegrass Fiddle

? Friday, October 14, 7:30 p.m.

On Friday, October 14, at 7:30 p.m., SeaTones Entertainment is proud to bring bluegrass fiddler Laurie Lewis to perform the Gualala Arts Center. Admission is \$12 advance, \$15 at the door.

International Bluegrass Music Association executive director Dan Hays calls Laurie "one of the preeminent bluegrass and Americana artists of our time." Acclaimed musician Sam Bush puts it more simply, calling her "a great singer, terrific fiddle player, fine songwriter, and one very good band leader." Laurie also performed on both the Grammy-award winning, 1997 IBMA album of the year, *True Life Blues: The Songs of Bill Monroe*, and the Grammy-nominated Ralph Stanley & Friends' release *Clinch Mountain Country*.

In 2004, Laurie and her musical partner, Tom Rozum, released their third duo album, *Guest House* (their first for HighTone Records), a characteristically versatile and engaging offering of love songs, laments, social commentary, and freewheeling fun in the spirit of old-time music. Laurie and Tom pay homage to such eminent influences as Woody

Guthrie, Hazel Dickens, Grandpa Jones, and the inimitable Bill Monroe, adding their own distinctive touches to traditional favorites as well as performing several of Laurie's nonpareil compositions.

Don't miss this evening of bluegrass and acoustic nirvana!



Boonville Big Band

? Saturday, October 29, 7:30 p.m.



The music of the Big Bands saw this country through some of the most difficult times, and to this day resonates with an American soul all its own. Gualala Arts' new entertainment series, "LocalEyes," is proud to present the swingin' Boonville Big Band at the Gualala Arts Center on Saturday, October 29, at 7:30 p.m. Admission is \$10. Halloween costumes are encouraged!

The band meets weekly in Anderson Valley and has been performing around Mendocino County for the last five years. Composed of some of the county's finest musicians, they have entertained audiences from Willits to Point Arena, and from Fort Bragg to Boonville. Hoping to inspire young musicians, the band has played concerts at local schools and has helped raise money for many local charities.

The band's mutual pleasure in playing together is infectious and listeners can't help but respond to the Big Band beat with enthusiastic swing dancing. Band leader, the renowned Bob Ayres, is a gifted musician and has dedicated his life to spreading the joy of music to one and all.

Boonville Big Band feels that their music imbibes the best of people's spirit, and to that proposition they vow to continue to bring light and happiness to whomever falls under their spell.

Local
eyes

Thanks to All Who Made AIR a Success!

Gualala Arts certainly met its mission of promoting public interest and participation in the arts on the weekend of August 20 and 21, with a highly successful 44th annual Art in the Redwoods Festival.

But we did not do it alone.

Charlie Hitt and Phil Atkins were at the helm of the GAC security team, who kept the cars flowing and the public safe throughout the weekend. Gualala Arts' Culinary Guild members staffed the BBQ booth, directed by Jim Grenwelge (our Volunteer of Year award winner for 2005), Ben Klagenberg (last year's Volunteer of the Year), and Paddy Batchelder. The Gualala Lions Club popped corks and poured wine and soda at the Beverage Booth with guidance from Bill Nichols and Jack Vore. The Sweete Shoppe dosed the appropriate sugar prescriptions from Dr. Dard Hunter and his sweet, friendly staff. Carol Tackett creatively decorated the tables for dinner, Harriet Wright and the exercise group set up tables, Lisa directed the servers, Rene Fueg prepared the delicious feast, and Don Endemann spearheaded the surprise entertainment for a memorable dinner. Steve May and the Surf Supermarket donated the wine and champagne. The Kids Crafts area was carefully cared for by Maria Linker, Loretta Healy, and Tony Green. The front entrance gate was guarded closely by a veteran of close to 20 years, John Cairns and his team. All the fabulous local talent that was showcased on our various stages donated their time and magic for us to enjoy. Food/drink tickets were headed up by Barry Semegram. The docents and sales desk were meticulously run by Polly Dakin and Harriet Wright. *The Independent Coast Observer* did a fabulous job on the new color cover program this year.

Scott Chieffo organized our artists' vendor booths. John Le-Baron, Bob Nugent, and Consuelo Underwood did a bang-up job of judging the show this year. The Arts Center could not



have looked so fabulous without the direction of our "extreme" hanging committee: C.E. Brown, Jerry Erickson, Jim Grenwelge, Sonya and Dick Halley, Ken and Jeanne Holmes,

Robert Holmes, Bruce Jones, and Lee Kosso.

Some 300 volunteers, dozens of committees, and many generous financial donors made this wonderful coastal tradition a huge success for Gualala Arts and the community.

At the center of this tradition are the Artists! Veterans have commented that the artwork keeps improving year after year. We had 25% more artists participate this year! Special thanks to four award-winning artists (Walt Rush, Hansine Goran, Rozanne Rapozo, and Craig Gilliland) who generously donated back their prize money to Gualala Arts. (I am humbled.)

Promoting interest and participation in the arts is what Gualala Arts is all about, but for those who judge success by figures here are a few from the weekend:

- Some 3,000 visitors and neighbors attended (up 15%). Our new two-for-one Sunday admission was very well received.
- \$25,100 in gallery sales in the first weekend (up 20%).
- \$57,000 paid to artists through awards, artist booths, and gallery commissions.
- 82 pieces of gallery art sold thus far at the average price of \$306. Over 20% of entries sold on the first weekend!
- Close to \$4,000 for "Arts in the Schools" and scholarships from the quilt raffle and hat sales.

I'm grateful to each artist, donor, volunteer and to Gualala Arts' able and dedicated staff (D, Dar, Lizzard, Q, the Phoenix, and Spencer) for their time, energy, and support. Most of all, I am grateful to Karel Metcalf, my mentor, and the Gualala Arts Board of Directors for their support, and the opportunity to serve our community.

This is *your* Arts Center—thanks for making *your* Art in the Redwoods such a huge success in 2005!

Many thanks,
"Sus" Susalla
rector, Gualala Arts

David
Executive Di-



Call For Artists: Miniatures Show in February 2006

Think big, create small! Sculpt, paint, mold, print, turn, fashion your medium into 12" or less, for height, width, depth, including frame, when applicable.

This is a members' only, juried show, February 11 through March 5, 2006, with the opening from 5 to 7 p.m. on February 11.

Applications are available at the Arts Center, or online at gualalaarts.org, where further information can be obtained. There is a non-refundable, \$5 per piece entry fee. Artists must turn in their applications at Gualala Arts Center by Monday, January 30, preferably earlier. A list of accepted pieces will be posted at the office by 4:30 p.m. on Wednesday, February 8.

ACT Brings Horton Foote's Lyrical Play to Gualala Arts Center

- ? *Friday, October 7, 7 p.m.*
- ? *Saturday, October 8, 2:30 p.m.*
- ? *Sunday, October 9, 7 p.m.*



Arts Center Theater is pleased to announce its October production of Horton Foote's "The Carpetbagger's Children" to be performed by three talented thespians who are bringing the play to Gualala from Santa Fe, New Mexico. Audiences will remember Lois Viscoli from her performance as Virginia Wolff in "Vita and Virginia" produced at Arts Center Theater in 2003. On this trip to the coast, fellow actors Gay Nathan and Catherine Donavon will accompany her.

"The Carpetbagger's Children" is Horton Foote's most recent play and is also his most lyrical. Although he is best known for his two Academy Award winning screenplays, "To Kill a Mockingbird" and "Tender Mercies," Mr. Foote is one of America's most prolific and respected playwrights. Born in 1916, he has been writing for over 60 years and his acclaimed play, "The Trip to Bountiful" is celebrating its 50th anniversary. He won the Pulitzer Prize in 1995 for "The Young Man from Atlanta." In 2002, "The Carpetbagger's Children" played Lincoln Center in New York and featured Roberta Maxwell, Jean Stapleton, and Horton Foote's daughter, Hallie Foote.

What is striking about Foote's body of work is that he has never strayed from his vision. His plays are very much connected to a sense of place: they are all set in or around the small town of Harrison, Texas, which is based on the town of Wharton, Texas, where he grew up. Many of his characters are drawn from his family and the community of people with whom he spent the first 16 years of his life. His is a world of storytellers, where the details of the past hold great importance. He grew up in a time when story telling was very much a part of everyday life, as a means of sharing time with others as well as

keeping rooted to one's own history. He writes out of deep respect for his people, with an ear finely tuned to the texture of their dialogue and to the humor, poignancy, and finely stitched details of their stories.

Just as Harrison, Texas, is a constant part of the physical landscape of his work, loss and change is always a part of the emotional landscape. He continually investigates and explores characters' responses to loss and change. He has said that if there is a theme to his work, it is people's courage.

He writes of the courage, struggles and the dignity of ordinary characters living seemingly quiet, everyday lives. In spite of writing from a place that is deeply personal for him, Horton Foote's plays touch on things universal: resilience, compassion, reconciliation, and redemption.

"The Carpetbagger's Children" is the first of his plays in which his characters share their stories directly with the audience. It is very much a memory play. Although they have a common history, the three sisters' stories are subtly shaded by the ghost of their individual pasts. Horton Foote's work has been greatly influenced by writer Katherine Anne Porter, whose view on the relationship of the past to the present is especially pertinent to this play: "No legend is ever true, but I believe all are founded on some sense of truth."

Ultimately "The Carpetbagger's Children" asks the questions: in the end, what is truly important in our lives, what are those lingering questions and regrets that will haunt us, and what is it that remains when we are gone?

"The Carpetbagger's Children" performs on the Gualala Arts Center theater stage October 7 and 9, at 7 pm, and October 8, at 2:30 pm. Tickets are \$12 and are available at Gualala Arts Center, the Dolphin Gallery, or by calling 884-1138.

Visit the Earth's Wild Places with *National Geographic* Photographer Ralph Lee Hopkins

- ? *Monday, October 10, 7:30 p.m.*

World-renowned photographer Ralph Lee Hopkins travels regularly to some of the wildest places on earth! As part of the Gualala Arts Lecture Series, Ralph will give a free presentation on Monday, October 10, at 7:30 p.m. at the Arts Center, where he will take you on a visual journey from the Arctic to the Antarctic, from the desert shores of Baja, California, to the rainforest coasts of Costa Rica and Southeast Alaska, and to the exotic Galapagos Islands.

On this journey you will bask in the stunning beauty of Ralph's images as you discover what makes these wild places special and worthy of protection. Along the way you will also learn how to improve your own photography and how to address difficult climate and lighting conditions in the field.

Ralph Lee Hopkins is an expedition leader and photographer with Lindblad Expeditions and teaches workshops for Arizona Highways, National Geographic Expeditions, and Santa Fe Workshops. His photos have been featured in books by *National Geographic* and appear regularly in magazines including *Arizona Highways*, *National Geographic Traveler*, *Nature's Best*, *Outdoor Photographer*, and *Popular Photography*. Ralph is author of the popular guidebooks *Hiking the Southwest's Geology* and *Hiking Colorado's Geology*, and his images are represented worldwide by the National Geographic Image Collection and Lonely Planet Images. To view his online portfolio visit www.wilderlandimages.com.



Silk Paintings, Watercolors, and Mosaics Exhibiting at the Dolphin

? Opening reception: Saturday, October 1, 5-7 p.m.

Beth Seaward and Mercedes Romo came to their current artistic endeavors after following other paths. Each found her individual creative spark after moving to the Mendocino coast. Seaward draws on the scenic Mendocino and Monterey coastline. Romo travels further afield to Italy to find her inspiration.



"California Coast: Byways and Backyards," the title for Beth Seaward's exhibit this October at The Dolphin Gallery, contains a series of paintings done on location. Seaward uses a variety of media—watercolor, silk painting, and paint on glass—to capture the vivid seaside light and the spirit of magical space one experiences when driving the back roads of the northern and central California coast.

This show marks the debut gallery exhibit for Mercedes Romo, who has been featured in the Studio Discovery Tour. Before moving to Gualala 11 years ago, she followed an interest in murals in Sarasota, Florida where she attend the

Ringling School of Art for Design.

Each of this month's featured artists found her current interests after taking other avenues. The work of both shows that their journeys have led them to a place where the viewer can appreciate and enjoy the artist's special vision. An artists' reception from 5 to 7 p.m. with complimentary wine and hors d'oeuvres will take place at the Dolphin Gallery on the opening day of the exhibit, Saturday, October 1.



Prestigious Holmes/Erickson Exhibit

? Opening Reception: Saturday, October 8, 5-7 p.m.

Gualala Arts is privileged to host two talented and well-respected sculptors, Robert Holmes and Jerry Erickson, presenting photographic histories of their work along with representative pieces in the Burnett Gallery. The public is invited to the opening reception on Saturday, October 8, from 5 to 7 p.m.

The title of Mr. Holmes' exhibit is "Fine Art and Architecture." Photographs on display will show how sculpture and the context in which it is contained is the media for Holmes to transcend the enclosures creating a seamless flow with the landscape. The contemporary, sleek geometry of modern architecture and art become imbued with warmth and spirit in nature. Intriguingly familiar yet mysteriously unfamiliar, describes Holmes's style with his art and his architectural designs. He is also well-known for his attention to detail while exploring light and space.

The focus of integrating Holmes' bronze sculpture and the design of the home that was built in 2003 will be shown in photographs, revealing his naturally inspired genius. It is a renaissance of Robert's early architectural designs infused with his internationally acclaimed fine art. One free-standing piece-in-progress will also be shown in the gallery.

In 1980, North Bay sculptor

Jerry Erickson relocated from Davis to The Sea Ranch to innovate with wood and metal concepts. His retrospective exhibit is entitled "The Coastal Years, 1969-2005." A first series of work includes photographs of his "consumable sculptures," which were massive redwood walls or "stackings." These pieces were quickly recognized by the media, including spots on the TV program "California North" and interviews about his love of natural forms and materials in magazines like Santa Barbara's *Life Times*.

When Erickson, then an Art Consultant, was selected to create a sculpture of an 1847 Farthington Bicycle for presentation to Former First Lady Rosalynn Carter upon her visit to Davis, it ended up in the Smithsonian Museum. Erickson continues to exhibit throughout California, and in March 2005, was one of 40 artists and designers invited to show at U.C. Davis to benefit the new Design Museum.

In addition to selected private commissions, Erickson's exhibit at Gualala Arts Center will spotlight what he calls "open forms" (sheet bronze and stainless steel birds ranging in size from a few inches to several feet), several cast bronze sculptures, and photographs of completed works.

The show will run through November 6.



Erickson's 1847 Farthington bicycle sculpture that was presented to Rosalynn Carter



Robert Holmes's gallery

INTEREST GROUPS

All meetings take place at the Arts Center unless otherwise indicated

BASKET WEAVING

Please call Gerda Randolph if you are interested in this newly forming group. 785-2206.

BOOK DISCUSSION

New members are always welcome! This month's book is *The Devil in the White City* by Erik Larson. The selection for November is *Sacred Time* by Ursula Hegi.

Wednesday, October 5, 10 a.m. — Meeting at the home of Nancy Killean in The Sea Ranch. Please call 785-2695 if you plan to attend.

Thursday, October 20, 1 p.m. — Meeting at the home of Alice Combs in Gualala. Call 884-3741 if you plan to attend.

DINNER AT SIX

Wednesday, October 19, 6 p.m. — This Halloween-themed dinner is hosted by Carol Tackett and Team Five. Dinner At Six is a fundraiser for Gualala Arts and is open to all. A great way to support the Arts Center. To join call Gualala Arts 884-1138.

LIFE DRAWING

Wednesdays, 3-6 p.m. — At these informal sessions artists bring their own supplies, and a model is provided for a small fee.

NORTH COAST PHOTOGRAPHERS GROUP

No charge for GAC members, guests \$10. For more information call Barbara Pratt at 884-9028 or visit our group website at www.groups.yahoo.com/groups/NCPG.

Wildlife Photography — First Sunday, 1 p.m.

This photo group is for photographers who specialize in wildlife photography. Check the website for the program for that day.

Photography Forum — Second Tuesday, 7-9 p.m.

This group is for photographers to exchange information about the capture, processing and presentation of photographic images. Share three prints or jpeg images of the month's optional subject.

OIL PAINTING

Mondays & Tuesdays, 9 a.m.-noon — Ongoing classes taught by Connie Matz. Work at your own pace on subjects you choose. \$20/class, pay as you come. Call Connie at 884-4845 for more information.

PACIFIC PIECEMAKERS QUILT GUILD

Please note: PPQG will meet on the **second Friday in October**, one week earlier than usual.

Thursday, October 13, 10 a.m.-4 p.m. — "Free Form Flowers," using Charlotte Warr Anderson's unusually flexible appliqué method for smoother results. Author and creator of one-of-a-kind, original pictorial quilts, Charlotte teach this workshop on her unique appliqué method, as well as share her experiences of three decades of personal and professional quilting. The Utah native has developed a technique for creating and layering realistic and representational images in cloth, which has won for her many prestigious awards. For details, call Janet Windsor at 785-9324.

Friday, October 14, 12:30 p.m. — Charlotte Warr Anderson, author and creator of one-of-a-kind, original pictorial quilts, will speak to the guild. Join us in welcoming Charlotte. Social time at 1 pm.

PIANO GROUP

Monday, October 10, 1:30 p.m. — This group meets on the second Monday each month. Call Ann Harriman at 785-2721 for information.

READERS THEATRE

Tuesday, October 4, 7 p.m. — Readings of the works of Sylvia Plath (poetry); the works of Ron Carlson (short stories), a monologue derived from Lillian Hellman's "The Children's Hour," film scenes from "The Graduate," "Five Easy Pieces," "The Goddess," and "On the Waterfront." Listeners are welcome.

REDWOOD COAST PLEIN AIRE GROUP

Mondays, 10 a.m. — October 3: Meet at Café Lala to plan October-December.

PAINTING CLASS (ALL MEDIA)

Registration is still open for the Santa Rosa Junior College Painting Class taught by Judith Greenleaf at Gualala Arts Center. The class meets Wednesdays from 10 am to 4 pm, (with a lunch break) through November 9. Students may work in the media of their choice. All levels in watercolor and drawing media. Those working with oils should have some experience with the medium. Judith suggests that new students register for Art 14A, section 3391, even if you are not a beginner. REGISTRATION: online at santarosa.edu/weblink, by phone at 525-3800, or at a class meeting. TUITION: \$58 (including health fee) may be waived for low income students.

Last Summer Saturday Art Fest of the Year on Columbus Day Weekend

? Saturday, October 8, 10 a.m. to 5 p.m.

Gualala Arts hosts the last of the ninth annual Summer Saturday Art Festivals on Saturday, October 8, from 10 a.m. to 5 p.m., in downtown Gualala.

These open-air festivals feature more than a dozen individual artists and artisans selling fine art, photography, ceramics, jewelry, glass and woodworks. The event, which is free to the public, is sponsored by Gualala Arts and takes place on the

sidewalks east of Highway One in downtown Gualala. Free parking is available near the Gualala Post Office, a few steps from the festival. For further information—or for artists wishing to apply—contact Gualala Arts at 884-1138.



Members of Gualala Arts receive a discount on workshops, but anyone is welcome to join. An annual individual membership is \$30, and forms are available at the Arts Center, online at www.gualalaarts.org, or by telephone (884-1138). And there are more reasons to join Gualala Arts—receive advance notice on upcoming events and art shows with a free subscription to our monthly newsletter Sketches, full use of the Arts Center library, and coupons for money off admission or food at the annual Art in the Redwoods Festival.

Contact Barbara Pratt, bp@mcn.org or Gerda Randolph, randolph@mcn.org with your Workshop ideas and suggestions!

Workshops are not scheduled for December 2006, to break for the holidays.

Shibori Scarf Dyeing — Instructed by Joy-Lily
October 21. Noon–4 p.m. Tuition: \$50 + \$10 materials. Non-members: \$55 + \$10 materials. Register by Oct. 12. Shibori is the Japanese grandmother of tie-dyeing. Explore Arashi Shibori: pole wrapping, to fold, wrap, and dye multiple colors making white silk scarves into fabulous and colorful wearable art. Bring cotton to Shibori dye for quilting too. More about Joy-Lily at joy-lily.com.

Immersion Dyeing & Screen Printing

Instructed by Joy-Lily
October 22-23. Register by Oct. 12. Tuition: \$150 + \$15 materials. Non-members: \$165 + \$15 materials. Dye and print your own fabric. Create your own “designer fabrics” for quilting, sewing, or decor. On Saturday we’ll immersion-dye natural fiber fabrics such as cotton and silk using colorfast dyes. On Sunday we’ll create small silk screens and print designs onto these colored fabrics with non-toxic inks. Learn dye mixing, color blending, patterning, printing techniques. More about Joy-Lily at joy-lily.com.

Pyrography (Drawing with Fire)

Instructed by Jim Grenwelge
November 5 & 6, 10 am–4 pm. Register by Oct. 24. Tuition: \$30 + \$15 materials. Non-members: \$33 + \$15 materials. Materials list: contact Jim at jgrenwelge@msn.com or 785-9317. Jim Grenwelge will share with you a wide range of techniques he has developed for decorating gourds and wooden objects. If you didn’t learn it in summer camp as a youngster, now is the time to develop your skills with the simple wood burning tool. In this workshop, students will learn the design possibilities of working with dyes and paint to create historical visions. Jim has a long history of working with native American Indian artists and will share his many insights. We suggest you sign up early as this class will fill quickly.

Photography — Instructed by Ralph Lee Hopkins

Members: Register after Sept. 1 and the price drops to \$250 (space permitting)! October 10–14 (Monday-Friday). Tuition: \$495. Non-members: \$545. The focus is on exploring each participant’s creative vision and the elements of light, color, and composition, using classroom sessions and field trips to challenge and expand photographic skills. Film photographers are welcome but overnight processing is not available in the area. Digital cameras are recommended. A digital workstation is available at Gualala Arts, but students are encouraged to bring their own laptops and be familiar with downloading and image-editing software such as PhotoShop or Elements. A geologist by training, Ralph travels regularly as a pho-

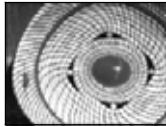


tographer and expedition leader with Lindblad Expeditions. More information about Mr. Hopkins at wilderlandimages.com.

Making Pine Needle Baskets

Instructed by Gerda Randolph

October 17 & 18, 10 am to 4 pm. Tuition: \$30 + \$15 materials. Non-members: \$33 + \$15 materials. Register by Sept. 14. Join this two-day workshop and learn to make beautiful coiled baskets out of pine needles. Using Canary Island pine needles, you will be taught how to weave beautiful swirling stitches that are identical on both sides of the basket. You will also learn how to begin a basket around a walnut slice and with a thread wrapped center. This workshop is appropriate for beginners and advanced basket makers wanting to learn new techniques. Materials for your basket are covered by the fee, but please bring a small pair of sharp scissors and a pair of needle nose pliers. Gerda is presently helping to form a local basket weaving group at GAC. Gerda can be reached at 785-2206 or randolph@mcn.org.



Culinary Arts — various instructors

Thursdays, 4–6 pm. \$20 each class.
September 29: Soufflés with Paddy Batchelder. Did you ever want to make something special for brunch or dinner? Have you thought about making a soufflé, but did not know how to begin? If you answered yes, then this soufflé class is for you! Learn the basics of this easier-than-you-think dish. We will discuss and taste three different kinds of soufflés: classic cheese soufflé, make-ahead soufflé, and a dessert soufflé.
October 13: Apple Pie with Phil Graf
October 20: Deep-fried Turkey with Jim Grenwelge
Later: A special surprise with René Fuego.

YOUTH WORKSHOPS

Art in Science: Exploring Light and Color

Instructed by Gerda Randolph and Anne Westwater
Saturday, November 5, 9 am–3 pm. Tuition: \$30. Materials Fee: \$10. Max. students: 15. Minimum: 8. Age Level: 8 to 11. Children 8 to 11 are invited to participate in this class and investigate the wonderful world of light and color through science. The class will include a variety of fun hands on experiments and art activities taught by Anne Westwater and Gerda Randolph. Anne and Gerda are each artists who have been science teachers, and they are looking forward to sharing the fun to be found in the relationships between art and science.

Creative Writing Contest
Winners Read at GAC

? **Monday, October 24, 7:30 p.m.**

As part of the Gualala Arts Lecture Series, the winners of the Third Annual Gualala Arts Creative Writing Contest will be announced on Monday, October 24, at 7:30 pm, with a lecture on the art of the essay (this year’s genre) by one of the writer judges and a reading of the winning entries. Contest organizer Stephen Kessler promises another thought-provoking and entertaining evening featuring local literary talent, and a chance to discover some of the Redwood Coast’s unknown writers. First place winners will be published in

The International Quilt Festival of Houston contacted our local Pacific Piecemakers Quilt Guild in a call for comfort quilts for victims of Hurricane Katrina—and the group, along with help from other community members—created and donated over 60 quilts in one day! Gualala Arts was proud to host this organized event and the following generous individuals that attended: Katy Horn, Laura Hamilton, Elizabeth Beckett, Lola DeLongoria, Elizabeth Langdon, Cynthia Snowden, Anita Green, Jeri Taylor, Lynne Atkins, Bonnie Morgan, Dori Hudson, Claire McPherson, Jo Dillon, Merilyn Limbaugh, Carol Erkela, Janet Sears, Mary Hunter, Joyce Gaudet, Paula Sullivan, Jolley Thomas, Sue Lease, Jane Head, Jan Carter, Barbara McNulty, Anita Kaplan, Carol Tackett, Gail Sims, Polly Dakin, Harmony Susalla, and Suzie Bates.

With Appreciation and Admiration . . .

Thanks to all September Dolphin Gallery docents!

Thanks to all September Arts Center docents: Susan Dawes, C.E. Brown, Ralph Schwartz, Sue Blair, Jan and Hal Fogel, Evelyn Osteras, and Jane Reichhold.

Thanks to our dedicated Sketches mailing team: Carole Erkkila, Sonja Thiene, Helen

Klembeck, Shirley Welch, Jean Lackey, Marilynn Balch, Harriet Wright. When Michael Anderson received a commissioned job from showing his artwork in the “Wood Creations” exhibit in the Gualala Arts’ gallery, he donated a commission back to Gualala Arts Center. If you sell works because of opportunities offered by Gualala Arts, we appreciate your

Call for Artists: “Click!...and Comments

“Click!...and Comments” is a Gualala Arts member’s show running November 12 through December 4 in the Gualala Arts Center gallery.



The reception to kick off this wild and wonderful photo exhibit is on Saturday, November 12, from 5 to 7 p.m. The show will not be juried and there will be no prizes, but participants will have an opportunity to get feedback from well-respected photographers/artists. These “comment” sessions will not be available to the public, but are valued feedback for each photographer who wants to participate. Marion Patterson, Siegfried Matull, and Kent Porter will be commenting and discussing the work with each photographer.

The “Click!” exhibit is open to everything that is being done with photog-

raphy. Along with the traditional wall art the show will encourage photographers to show how they are using their images for all types of projects and art from fabric to sculpture to self-published books, cards, stationery, and posters. Last year there were some very innovative sculpture pieces using photography. We are looking forward to seeing new ideas about how to use photography.

The exhibit is also open to video and animation and we’re hoping to have entries this year. Slide shows are an excellent way to communicate and becoming an art form. Several of our members specialize in wildlife videos and we’re hoping to see some of their great work.

Pick up your registration form online,

Pianist Marta Felcman to Perform at Gualala Arts Center

? **Sunday, October 16, at 4 p.m.**

The Gualala Arts Concert Series is pleased to present the leading Argentine pianist, Marta Felcman, in a performance of music by Brahms, Debussy, and J.S. Bach/F. Busoni. The concert will take place on Sunday, October 16, 4 pm, at the Gualala Arts Center.

An internationally-known recitalist, soloist, and chamber musician, Ms. Felcman started piano studies at the age of four in her native Buenos Aires. Later, she continued her studies in Vienna, London, and in New York City, where she now makes her home. Winner of important piano competitions in Argentina, she has also performed widely in South America, Europe, and the United States.

Marta Felcman’s performances have won critical acclaim in the press wherever she has appeared. She has been praised for her sensitive musicianship and interpretive genius. The *Richmond, Virginia, Times* hailed her performance as “one of the finest recitals in this writer’s memory... power and dexterity...

pure musical enjoyment.” The renowned British pianist Peter Katin wrote, “Her Schumann has to be one of the most imaginative performances I have heard.”

Her debut CD, released in 2002 by Jay Records (UK), includes works by Scarlatti, Bach/Busoni, Guastavino, Schumann, and Ned Rorem, who wrote “not only on my piece, but all the others are played with care, understanding and prowess.”

Tickets for the concert are \$15. Children ages 7 through 17 are admitted free. Advance tickets are available at Gualala Arts Center or at the Dolphin Gallery in Gualala. Tickets may also be purchased at the door prior to the performance. Those unable to furnish their own transportation to the concert may call the Arts Center to request rides. For further information call Gualala Arts at 884-1138, or visit gualalaarts.org.

