

# Sketches

Gualala Arts News · February 2005

## "Material Moments," a Fiber Arts Show

*Opening Reception: Saturday, February 12, 5-7 p.m.*

Fiber arts is the featured medium in this foyer and gallery exhibit entitled "Material Moments." The title is meant to suggest that there are points in time that expand as a viewer attunes to the materials of which artworks are made. This show brings out the delicate, translucent qualities of fiber and contrasts them with weightier and more structured works.



"Collapse" by Christine Laffer

Two of the artists, Joan Margolies-Kiernan and Victoria May, use silk organza, a cloth with almost no substance, to convey vulnerability, delicacy, and the softness of skin. Combining organza with other materials like ground steel or wood, each artist adds a positive charge to the fiber form.

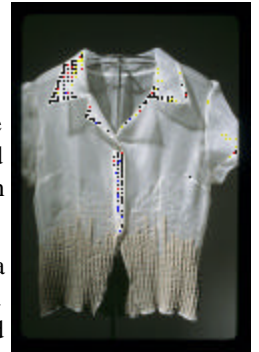
Pilar Aguero stitches sheets of glassine together with thread to make her structures and paints them with bees-

wax. The coating of beeswax stiffens the thin paper and gives it strength to stand on its own. They glow with an onionskin translucency.

Consuelo Jimenez Underwood makes a wire grid, a heavy "veil," that sets up a fence-like barrier in front of her politicized cloth. Christine Laffer weaves a heavy

These works offer an expansive view of fibrous materials from intimate and fragile, to constructed and dense. Their moments take the touch of fiber, its light and its mark of time and set them within human experience.

This exhibit will open on Saturday, February 12, with an opening reception from 5 to 7 p.m. The show will continue through March 6.



"Comfort" by Victoria May

## SwissTrek 2006

SWISSTREK 2004 is history, and all the primary sources give it high marks. Even before it was over, there was euphoric talk about "the next one." Phil and Ann Graf are willing and eager to don the leaders' hats again. Considering the planning and logistics involved, it is not too early to start thinking about "the next one." So, this is to let the Gualala Arts community know that the Grafs would like to re-run this great adventure again as SWISSTREK 2006.

September is the month, and the format will be essentially the same.

Trekkers can be assured that the classic destinations will be included, but that there will be enough variations in the itinerary to tempt repeaters. As in the past, SWISSTREK 2006 will benefit Gualala Arts, and it will represent exceptional value for money, but because of the dismal exchange rate, it is not yet possible to guesstimate the price. In the April issue of *Sketches*, we'll propose an itinerary, and cast the net for potential trekkers. Questions and input are welcomed; call the Grafs at 785-9213 or e-mail: [graphil@bigplanet.com](mailto:graphil@bigplanet.com).

CELEBRATE ARTS IN THE SCHOOLS  
**Hearts for Arts Valentines Sale**  
**INDOOR ART FESTIVAL**  
Saturday, February 12, Noon-5 pm  
Gualala Arts Center  
46501 Gualala Road in Gualala

proceeds benefit arts in our local schools

# GROUPS & CLASSES AT GUALALA ARTS CENTER

All meetings take place at the Arts Center unless otherwise indicated

## AEROBICS

**Mondays, Wednesdays, Fridays, Saturdays, 8 a.m.** — Call Debbie Langwell at 884-5021.

## BOOK DISCUSSION

New members are always welcome! This month's selection is *Pride and Prejudice* by Jane Austin. March's selection is *White Teeth* by Zadie Smith.

**Wednesday, February 2, 10 a.m.** — Meeting at the home of Nancy Strain-Traylor in Gualala. Call 884-3305 if you plan to attend.

**Thursday, February 17, 1 p.m.** — Meeting at the home of Roz Bray in The Sea Ranch. Call 785-2694 if you plan to attend.

## DINNER AT SIX

**Wednesday, March 2, 6 p.m.** — This group is organizing for 2005. Anyone wanting to become a part of this program may call the Arts Center. Dinner at Six is a fund raiser for Gualala Arts. It's a great way to support the Arts Center and have a good time, and it's open to all.

## INTENSIVE PAINTING WORKSHOP

**Thursdays, January 27–February 24, 10:30 a.m.–4:30 p.m.** — An advanced non-toxic class designed to stretch your abilities and perceptions to deeper, more alive painting. Instructor L.J. Rose has over 30 years experience in painting, with extensive training. She will cover a different approach in painting beginning with dynamic compositions in realism to pure abstraction, to expand your painting repertoire. \$60/day, \$250/five weeks, sliding scale. Call 884-1138 for more information or to register.

## INTRODUCTION TO PHOTOGRAPHY

**Thursdays, March 10, 17, and 24, 7–9 p.m.** — This introductory class, instructed by Scott Chieffo, is designed for those wishing to develop a basic foundation in the general principles and techniques of photography. Regardless of whether one uses the latest digital SLR or a fully manual film camera, understanding certain fundamentals is necessary in order to CONSISTENTLY achieve successful photographic results. One goal of this class will be to show participants the total control and unlimited artistic possibilities that exist by taking their cameras off of "Program" mode and switching to "Manual" mode. No previous photographic knowledge is necessary to attend. \$75 fee. Please call 884-1138 for more information or to register.

## \*NEW\* JAPANESE COOKING

**Thursdays, April 7, 14, 21, & 28, 4–6 p.m.** — Instructor Akiko Docker is an excellent Japanese cook and is looking forward to the classes. \$60 for the four classes or \$20 per class. Open to all. Presented by Gualala Arts Culinary Guild. Call 884-1138 for more information.

## LIFE DRAWING

**Wednesdays, 3–6 p.m.** — At these informal sessions artists bring their own supplies, and a model is provided for a \$5 fee.

## NORTH COAST MARTIAL ARTS AND FITNESS

**Tuesdays, 4:15–5:15 p.m.** — Martial arts for children, instructed by Lini Lieberman. Call 785-2288 for information.

## NORTH COAST PHOTOGRAPHERS GROUP

Any and all interested persons are welcome to join any of these sessions. For more information call Barbara Pratt at 884-9028 or visit our group website at [www.groups.yahoo.com/group/NCPG](http://www.groups.yahoo.com/group/NCPG).

## PHOTOGRAPHY FOR NEWBIES — Tuesdays, February 8, 15, 22, 10 a.m.

Bring your questions, camera and guidebook. Computer and software questions are also explored. This group meets weekly.

## PHOTOGRAPHY FORUM — Tuesday, February 8, 7–9 p.m.

This group meets on the second Tuesday of each month, and is for photographers to exchange information about the capture, processing, and presentation of photographic images. Share three prints or jpeg images, on CD or Flash Drive, of this month's optional subject.

## PHOTO GROUP FOR WOMEN — Wednesday, February 16, 10–noon p.m.

This group meets on the third Wednesday of each month and is a photo group for women to exchange information about photography and how they are using it. Bring prints, projects, or jpeg images to share.

## OIL PAINTING

**Mondays & Tuesdays, 9 a.m.–noon** — Ongoing classes taught by Connie Matz. Work at your own pace on subjects you choose. \$20/class, pay as you come. Call Connie at 884-4845 for more information.

## PACIFIC PIECEMAKERS QUILT GUILD

**Friday, February 18, 9:30–3:30 p.m.** — PPQG's February meeting will be an all-day Comfort Quilt workshop. Help replenish our inventory of colorful quilts for charity, while spending the day with quilter friends. Bring lunch and sewing supplies. Start a quilt, finish a quilt, or team up with a partner to create one together. Fabric and batting is provided. Lunch and business meeting at noon.

## \*NEW\* PAPER ART: HOLIDAY ORIGAMI

**Friday, February 4, 1–3 p.m.** — It's 2005, and here comes another year full of holidays. Let's have fun with origami, the ancient Japanese art of folding squares of paper into unusual shapes. Having studied geometry helps, but is not necessary and doesn't guarantee success. Please pre-register at Gualala Arts 884-1138. \$20 for members, \$25 for non-members including materials. Call Vivian Green for information 884-4127.

## PIANO GROUP

**Monday, February 14, 1:30 p.m.** — This group meets on the second Monday each month. Call Ann Harriman at 785-2721 for information.

## \*NEW\* PLANNING FOR RETIREMENT AND BEYOND

**Friday, February 11, 1–4 p.m.** — Come ask questions and share answers. Vivian Green, who has a master's and doctorate in economics, promises to offer clear and simple explanations. Health care, income, savings, insurance, living situations, reverse mortgage, social security, will and/or trust, working after retirement, etc. \$30 for members, \$35 for non-members. Please pre-register at Gualala Arts (884-1138). Please contact Vivian Green (884-4127) for a worksheet before class.

## READERS THEATRE

**Tuesday, February 1, 7 p.m.** — Reader's Theater will be reading episodes from *Fawlty Towers*, written by John Cleese and Connie Booth. Please contact Cyndy Solomon at 884-4534 for more information.

## SOUTH COAST PLEIN AIRE GROUP

**Mondays, 10 a.m.** — The idea is that most of us need a jump start in art on Monday morning—not just talking about it, but actually doing it. This group plans a schedule for three months at a time and anyone who wants to participate may just show up. No money is involved. Call 884-3381 for information. **February 6:** Two Fish Bakery on Annapolis Road. Meet for carpooling at 9:45 a.m. at Sea Ranch Lodge. **February 13:** Del Mar Point. We will get clearance from Sea Ranch Security so we can park without fear of boots. The south view from the point is especially beautiful in the morning. If it's rainy we'll go to the Lodge. **February 21:** Gualala Cliff Trail, behind the motel. If it's rainy we'll go to Sandpiper and draw its great view. **February 28:** Sea Ranch Chapel—an intriguing interior and exterior.

**WANTED: BUBBLE WRAP.** Needed to wrap sold artwork. Please drop off at the Arts Center.  
Reward: getting it out of your house.

## Thank You! Thank You!

Dolphin Gallery docents  
last month: Lee Kosso,  
Walt & Susan Rush,  
Shirley Welch, Dot  
Porter, Elaine Lawson,  
Ralph Schwartz, Ann  
Graf, Rose Miglio, Jean  
Whitridge, Harriet  
Wright, Helen Klembeck,  
Carole Ostrander, Clare  
Olk, Beva Farmer, Cecilia

Moelter, Evelyn Osteraas,  
Ellen Soule.

The January Sketches  
mailing team: Marilyn  
and Dick Balch, Diane  
Cunningham, Helen  
Klembeck, Harmony  
Susalla, and Harriet  
Wright.



## April 1, 2, 3, 2005

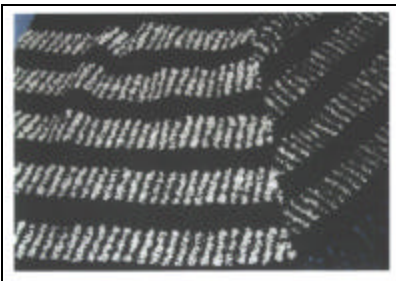
A three-day celebration of jazz and the annual migration of Gray Whales on our coast. Dinner & Jazz, Brunch & Jazz, Sunset & Jazz. Chowder Challenge, beer & wine tasting, Whale Walks at Gualala Point Regional Park. Whale Watching at Point Arena Lighthouse. More information to come next month!

## Loom and Lens: Weaving and Photography at the Dolphin Gallery

**Opening reception: Saturday, February 5, 5 to 7 p.m.**

An exhibit of weaving and photography by Verena and Ray Borton will open on Saturday, February 5, at the Dolphin Gallery in downtown Gualala. Please join the artists for wine and hors d'oeuvres at the opening reception from 5 to 7 p.m. The show will run through March 2.

Verena Reckendorf Borton represents the third generation in her family's weaving tradition, reaching all the way back to the beginning of the last century in northern Europe. She first learned her craft as a small child during World War II in her mother's studio and later as a student in her mother's classes in an international school in the Netherlands. After immigrating to the United States in the late fifties, she eventually served her apprenticeship in Master Weaver Edith Reckendorf's Massachusetts and California studios.



"Black and White Shawl" by Verena Borton

Since 1959 Verena has taught weaving and other crafts to children in situations as diverse as a Massachusetts art and drama camp; an occupational therapy program in an Ethiopian pediatric malnutrition ward of an Addis Ababa hospital; a recreational program for children of the International Rice Research Institute in the Philippines; in classrooms at North Davis Elementary School; and in a private summer crafts workshop in her backyard, and home in Davis.

In 1987 she moved most of her looms to the newly built Davis Art Center (1919 F Street, Davis, CA 95616) where she maintains a fully equipped studio for year-round weaving classes serving students ranging in age from five to 79. For several years the classes have been listed as "high priority" and enrollment is by lottery drawing.

Although the combination of teaching English Language Development at North Davis Elementary School until her retirement in June 2004, and the ongoing weaving program at the Davis Art Center, left Verena limited time for her personal weaving, she has participated in exhibits at The Sea Ranch Lodge, the Artists' Collaborative Gallery in Old Sacramento, the Davis Art Center, the Yolo County Administration Building, the Sacramento Arts Festival, and Art in the Redwoods. Verena shows and sells each year at the Davis Art Center Holi-

day Sale (the Art Center's principal fundraiser) in early December and in 2004 emerged as the top seller among 70 artists. Her work is currently available at the Noel Flynn Gallery in Roseville.

Verena says, "I weave primarily large throws, shawls, scarves, baby blankets and rugs, using both natural and synthetic fibers (depending on what suits the purpose). Many of the yarns are unique and in limited supply, which means that the resulting articles are one-of-a-kind. The smaller pieces, such as scarves and baby blankets, are pre-washed, while dry cleaning is recommended for the larger items. Because of common wool allergies, I weave some scarves that have no wool content at all."

After 25 years of amateur photography Ray Borton first ventured into marketing his work in 1978. Photography as an avocation began in high school in his native state of Michigan and continued through degree work at Cornell University (B.S.), Michigan State University (M.S.), and Montana State University (PhD in Agricultural Economics).

Ray has resided in Holland, South Vietnam, Mexico, Ethiopia, and the Philippines, as well as in Michigan, New York, Montana, and California, as part of his work in international agricultural development. In 1996 he retired from The California State Trade and Commerce Agency. In retirement he is keeping his Hasselblad handy and spending more time on his photography business.

His work can currently be seen at The Artists' Collaborative Gallery in Old Sacramento, The Avid Reader Bookstores (Sacramento and Davis), and The Sea Ranch Village Store. At Art in the Redwoods he has received Best in Show, Judges Award for Artistry, and awards for illustrating ocean environmental preservation.

Ray talks about his work: "My favorite photographic subjects are California landscapes and flowers. I use a Hasselblad medium format camera and a 35 mm Canon. There will be many scenes from The Sea Ranch, most taken within walking distance of our vacation home."

The Dolphin Gallery is open daily from 10 a.m. to 5 p.m. Please call 884-3896 for more information.



Photograph by Ray Borton



**February  
2005**

**News & Events  
of Gualala Arts**

Promoting public interest and participation in the  
arts in our community since 1961.

U.S. Postage Paid  
Nonprofit Org.  
Permit #1  
Gualala, CA  
95445

## Sketches

46501 Gualala Road  
PO Box 244  
Gualala, CA 95445

707-884-1138  
info@GualalaArts.org

**Gualala Arts Center is open:**  
9 a.m.-4 p.m. weekdays  
noon-4 p.m. weekends

Mailing Address Line 1  
Mailing Address Line 2  
Mailing Address Line 3  
Mailing Address Line 4  
Mailing Address Line 5

Get up-to-date  
information  
on our website:  
GualalaArts.org

**Gualala Arts' semi-annual**

# Recycle Your Art &

# Second-Hand Sale

**Saturday, March 12, 9-11 a.m.**

Get a jump on  
spring cleaning!  
Your donations are  
tax-deductible and  
are now being  
accepted!

furniture  
kitchenware  
appliances  
toys

home decor  
books  
fine art  
and much more!

## Gualala Arts' mission is to promote public interest and participation in the arts.

### A Lens on the Past: The Ethnographic Photography of Bill Heick

*Film showing: Saturday, February 5, 4 p.m., and Sunday, February 6, 1 p.m.*

Gualala Arts is honored to have renowned photographer William Heick present at the opening reception of his exhibit on Saturday, February 5, from 5 to 7 p.m., when he will show his film, "Acorn Bread Making Ceremony." On Sunday, February 6, at 1 p.m., Mr. Heick will show another of his films, "Pomo Shaman." Mr. Heick's Native American photography exhibit will continue through February 11.

Mr. Heick was a documentary photographer for University of California, Berkeley, ethnographer Samuel A. Barrett, who conducted interviews and research among local natives in the '50s and '60s. His distinguished work has appeared at the Smithsonian Institution, The Phoebe Hearst Museum of Anthropology, and the San Francisco Museum of Modern Art.

William "Bill" Heick has practiced his trade continuously for more than six decades. The advent of World War II directed him into this field—he enlisted in the Navy and was assigned to the Pacific as a photographer.

Heick returned to San Francisco after the war, and joined his brother-in-law's landscaping business. Because his work hours were flexible, he found time to enroll in the California School of Fine Arts, where he studied under Ansel Adams and Minor White. Other luminary photographers who were guest lecturers at the school during this time included Dorothea Lange, Imogen Cunningham, and Lisette Model. Heick reflects: "Ansel's enthusiasm for photography was so great that all of us students found it contagious. He was always upbeat and positive. During one class, I photographed him with guest lecturer, Dorothea Lange. Ansel wanted a set of those photographs, so we struck a deal—four signed Heick prints for one signed Ansel Adams—one of the pictures of Dorothea and Ansel appears in the catalogue for the Adams 100 exhibition. I also traded with Imogen Cunningham—gardening work for photographs."

Heick's most productive period as a black-and-white photographer was in the late Forties and early Fifties. He had a one-man exhibition at the San Francisco Museum of Art in 1949, followed by an exhibition at the de Young Museum in the same city. During this time period, Heick was also involved with the late Sidney Peterson in his pioneering avant-garde

film projects at the California School of Fine Arts. "Sidney was affectionately known as the granddaddy of avant-garde film, and his classes introduced me to the art of film-making." Heick went on to Seattle with Peterson and Bob Gardner as cinematographer for Orbit Films. With this experience under his belt, Heick returned to San Francisco where he was hired as a documentary filmmaker for Bechtel Corporation's worldwide

projects covering five continents. On assignment, he would always bring along his still camera, capturing images of indigenous people from around the world. In 1999 Heick received an Award of Excellence from the International Cinematographers Guild, which was presented to him at George Lucas' Industrie Light and Magic in San Rafael.

"Life On The Rez: Coast Pomo Youth Speak Out," a local youth film about living on the Pomo Reservations of Kashia, Point Arena, and Manchester, will also be shown on Saturday at 4 p.m. Following the film will be an open forum for discussion. Because of its raw power and stark honesty, it has widened the eyes of the youth who made the film and the thousands of people who have seen it. The film has shown to diverse audiences, from schools to art centers, from tribal centers to businesses to community service organizations. It even managed to land in the Smithsonian Cultural Heritage Library.



Essie Parrish (Piwoya)—Kashia Spiritual Leader

### Swim with the Courtroom Sharks at GAC

*Monday, February 28, 7:30 p.m.*

Ever wonder how the lawyer in the movies knows just the right questions to ask to catch the witness in a lie? If Perry Mason, L A Law, and The Practice were some of your favorite television shows, be sure to be at the Gualala Arts Center on Monday, February 28, at 7:30 p.m. for "Swimming with the Sharks: How Lawyers Win in Court," when local resident Charlie Hitt reveals why attorneys make the choices they do in the courtroom.

He should know. Before moving to the coast, Mr. Hitt was a successful trial attorney in Dallas. During his 17 years of

practice he tried numerous lawsuits and successfully defended a variety of different cases involving millions of dollars. You will be surprised and delighted as he shares his expertise and experience on lawyers' courtroom tactics with you.

Some of you may remember Charlie's last presentation for the Gualala Arts Lecture series on the secrets of jury selection. Find out what happens after the jury is selected and the trial begins. A small donation of \$5 to Gualala Arts will ensure your seat for the fun.



# Roy Bogas and Geraldine Walther in Viola and Piano Concert

*Sunday, February 20, 4 p.m.*

The Gualala Arts Chamber Music Series is pleased to present Geraldine Walther, viola, and Roy Bogas, piano, in a concert on Sunday, February 20, 4 p.m., at Gualala Arts Center. For the past two summers, Bogas and Walther have performed in the Gualala Summer Chamber Music Festival as part of the five-member ensemble "Roy Bogas and Friends," featuring Bogas and four principals of the San Francisco Symphony. Their sold-out performances were met with enthusiastic standing ovations and calls for their return. The full ensemble will indeed return in July for the 2005 Gualala Summer Music Festival, but meanwhile, having Bogas and Walther perform as a duo provides a special midwinter treat for Gualala.

The concert will include J.S. Bach's *Sonata for Viola and Piano in D Major*, Joseph Haydn's *Divertimento in D Major*, Paul Hindemith's *Sonata* (1919), and Ernest Bloch's *Viola Suite* (1919).

Of a concert by Roy Bogas, the Riverside Press-Enterprise wrote, "Bogas searches sensitively for tone quality; he listens, blends, makes the music say something beyond what the notes signify." And about a performance by Geraldine Walther, the San Francisco Chronicle wrote, "Walther brought a wondrous blend of lyricism and energy to the score."

Roy Bogas received his training in New York and at the San Francisco Conservatory of Music. He made his debut with the San Francisco Symphony at age fourteen, and was a prizewinner at the second Tchaikovsky Competition in Moscow in 1962. At the age of 19, he became accompanist to Yehudi Menuhin, playing over a hundred concerts with him throughout North and South America. He has also played with Michael Rabin, Rugiero Ricci, Jaime Laredo, and Joseph Szigeti, with whom he recorded a number of 20th Century works for Mercury Records. As principal solo pianist for the San Francisco Ballet, he recently toured with the company to Athens, Greece, and London, England, performing Tchaikovsky's *Allegro Brillante* and Ravel's *Concerto in G Major*.

Bogas has performed as soloist with virtually every orchestra in Northern California, as well as many other orchestras in this country and abroad. As an active chamber musician, he has appeared at many summer music festivals, including the San Francisco Symphony's chamber music series at Davies Hall, and the Gualala series. He is the founder of the MasterGuild Series of

chamber music at Holy Names University in Oakland, where he is Professor of Music .

Geraldine Walther has been principal violist of the San Francisco Symphony since 1976, having previously served as assistant principal of the Pittsburgh and Baltimore Symphonies and the Miami Philharmonic. A graduate of the Curtis Institute of Music and the Manhattan School of Music, she was first prize winner of the William Primrose International Competition in 1979.

A frequent soloist with the San Francisco Symphony in such works as the William Walton, Walter Piston and Robin Holloway viola concertos, Ms. Walther was most recently heard as soloist in Benjamin Britten's Double Concerto. She has given the U.S. premieres of Taru Take-mitsu's A String Around Autumn, Peter Lieber-son's Viola Concerto, and George Benjamin's Viola, Viola. She has also recorded Hindemith's Trauermusik and Der Schwan-endreher with the San Francisco Symphony for London Records. In 1995, she was selected by Sir Georg Solti as a member of his Musicians of the World, which performed in Geneva to celebrate the 50th anniversary of the United Nations.

As an exponent of contemporary music, Ms. Walther performed Holloway's sonata for viola alone, and his trio for clarinet, viola and piano at the Kohl Mansion in Burlingame, with the composer present. She is also a chamber music enthusiast, and, along with Roy Bogas, is a member of the MasterGuild Series of chamber music in Oakland. She has played in many chamber music concerts yearly in the Bay Area and elsewhere. She is the founder of the Ruby Mountain Chamber Music Festival, and has performed in the Santa Fe, Marlboro, Tanglewood, Bridgehampton, and Telluride Festivals, as well as the Green Music Festival at Sonoma State, and the Gualala Summer Music Festival. She has appeared as guest artist with the Vermeer, Guarneri, Lindsay, Cypress, St. Lawrence, and Tokyo String Quartets, and has collaborated with such artists as Isaac Stern, Pinchas Zukerman, and Jaime Laredo.

Tickets for the Gualala concert are \$15 each. Children ages seven through 17 are admitted free. Advance tickets are available at the Gualala Art Center or at the Dolphin Gallery in Gualala. Tickets also may be purchased at the door prior to the performance. For further information, call the Gualala Arts Center at 884-1138.



Items that are to appear in *Sketches* must be submitted by the first of the preceding month, and must be a Gualala Arts event.

**S k e t c h e s ~ F e b r u a r y 2 0 0 5**