



DECEMBER 2010
SKETCHES

ARTISANS' CO-OP
AT BODEGA

CHRISTMAS
SHOW

A HOLIDAY
CONCERT FOR
THE COAST

DOLPHIN
HOLIDAY
BOUTIQUE

ARNA MEANS
SEA RANCH LODGE
FRONT GALLERY

FESTIVAL OF
NINE LESSONS
AND CAROLS

NEW YORK
NEW YEARS EVE



A HOLIDAY CONCERT FOR THE COAST

ERNEST BLOCH BELL RINGERS
SATURDAY, DECEMBER 4, 2010 AT 3:00 P.M.
GUALALA ARTS CENTER

The sounds of four and a half octaves of beautiful handbells will fill the Coleman Auditorium on Saturday December 4th at 3:00 p.m. The Ernest Bloch Bell Ringers and their friends will present a Holiday Concert for the Coast.

There will be much singing at the concert and the audience will be invited to join in the fun. Fifteen ringers, the youngest being 12 years old, will delight your senses with intricate ensemble bell ringing on

such pieces as *Angels From the Realms of Glory*, *Carol of the Bells* and *Coventry Carol*.

Clarinetist Eric Kritz will join the ringers and will dazzle on *A Charlie Brown Christmas* and *Just a Closer Walk with Thee*. And Karl Young, playing his hauntingly beautiful Japanese flute, the shakuhachi, will accompany them on *O Come, O Come, Emmanuel* and *Breath of Heaven*, a lovely new song written in part by Amy Grant, which will be sung at this concert by Elise Allen.

Remi Alexander will be singing *Winter Wonderland*, and Sita Milchev, Jeanne Jackson and Linda Bostwick will be singing in three-part harmony on *Angels We Have Heard on High*. The audience will have the chance to join them in the chorus. Local treasure Sita Milchev will also be singing *Ave Maria* with the Ernest Bloch bell trio, a not-to-be missed experience. Sita also has some surprise entertainment in store for the audience with Don Krieger at the keyboard that will have you laughing.

All this and more awaits you on Saturday, December 4 at the Ernest Bloch Bell Ringers Holiday Concert! For more information contact Bell Director Jeanne Jackson at 884-1761.

\$10 advance, \$5 more day of concert
Youth 12 & under are admitted free..

For more info or tickets purchase, go to
GualalaArts.org



ARTISANS' CO-OP AT BODEGA

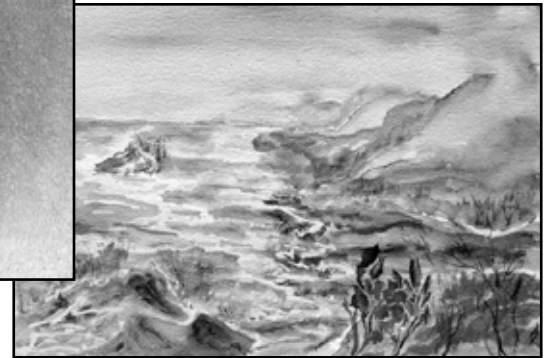
Opening Reception: Saturday, December 4, 2010 at 5:00 p.m.

Exhibit remains through January 2, 2011

Gualala Arts Center



The Artisans' Co-op at Bodega is a cooperative of local artisans who share time and work while running their gallery in the village of Bodega, California. All members' work is juried to ensure quality and originality. The Co-op has been in business since 1996. Many of our members have won awards, spent a lifetime working in their medium, have pieces in permanent museum collections, are published, or teach.



Over the years the Co-op has grown from the original dozen artists to fifty-three members. The artists work in diverse media including watercolor, photography, artful apparel and accessories, pottery, art glass, jewelry, basketry, fiber arts, journals, gourd

art, leatherwork, etc. Many of the fiber art artists use locally grown wool and alpaca from farms in the area.

The Artisan' Co-op in Bodega continues to encourage local artists to become full members and participate in running the Co-op. To get a sneak peak at some of the artists' work and see a featured Artist of the Month, visit www.artisansco-op.com.



CHRISTMAS SHOW



Local
eyes

FRIDAY, DECEMBER 17, 2010 AT 7:00 P.M.
GUALALA ARTS CENTER

On December 17, 2010, 7:00 to 9:00 p.m., at the Gualala Arts Center, a Christmas Show will be presented for your enjoyment.

All of your favorite Christmas songs will be performed by local vocalists who just love to sing. You will recognize them from the various plays and musicals put on by both the Art Center Theater and the White Barn on The Sea Ranch. They've never been together on the same stage at the same time so be prepared to be awed.

Some of the performers will be: Laurie Kreger, Cassie Grossman, Tony Ariola, Phil Atkins, Sita Milchev, Olivia Harrison, Sabina Walla, Ellen Buechner, and Elise Allen. Two new fabulous groups will be entertaining: "Sour Dough Jam" featuring Kyla Sherman, Davina Rose and Elise Allen, and the trio, "The Redwood Tree-O," which has finally come together after the original group disbanded over twenty years ago, featuring Sabina Walla, Tony Ariola and Sita Milchev.

A skit, "A Showbiz Christmas Carol," written by Garrison Keillor, acted by Jim Riley, Mike Turner and some of the above vocalists, should put a big smile on your face.

Lynne and Phil Atkins will bring us a lovely Christmas skit which hasn't been acted here for at least ten years.

Jim Riley will give a rendering of "Twas the Night Before Christmas." When was the last time you heard anyone read this great old story?

The Ernest Bloch Bell Quintet, a smaller group of The Ernest Bloch Bells (but the punch in sound is just as good) will play for your listening pleasure. That group consists of Tina Ballagh, Lucienne Allen, Davina Rose Allen, Jeanne Jackson and Sita Milchev.

Blake More will be reciting a new Christmas Poem for all of us to ponder over. She is a well-known local performer and we're in for a treat.

Mike Turner will read a piece written by Peter Arnott, "Gifts of The Season," explaining why we love Christmas-time so much.

This show is for everyone in the family. Don't miss it! Come and share this evening of fun and joy. The performers will have a rousing time on stage and you're sure have a good time too!

\$10 advance, \$5 more day of concert
Youth 12 & under are admitted free..

For more info or tickets purchase, go to
GualalaArts.org



HOLIDAY BOUTIQUE



TUESDAY, NOVEMBER 23 - SUNDAY, DECEMBER 26, 2010
OPEN 10:00 A.M. - 5:00 P.M. DAILY,
EXCEPT NOVEMBER 25 & DECEMBER 25

Fall and winter are exciting times on the north coast! As if the whale migration and our spectacular sunsets were not exciting enough, the Dolphin Gallery Holiday Boutique opens just before Thanksgiving!

The Boutique keeps getting better each year and this year promises to continue that tradition as we welcome a wide variety of wonderful handcrafted pieces such as jewelry, home décor, seasonal baubles, knitted or stitched accessories, small art works, and numerous other items.

The Dolphin Boutique is a unique place to bring your gift list (or your wish list!) and spend some time shopping and chatting with the friends and neighbors you will probably find there. Since other items are

frequently brought in to replace those that have sold, you may want to drop in on a regular basis to make sure you don't miss that "perfect" gift!

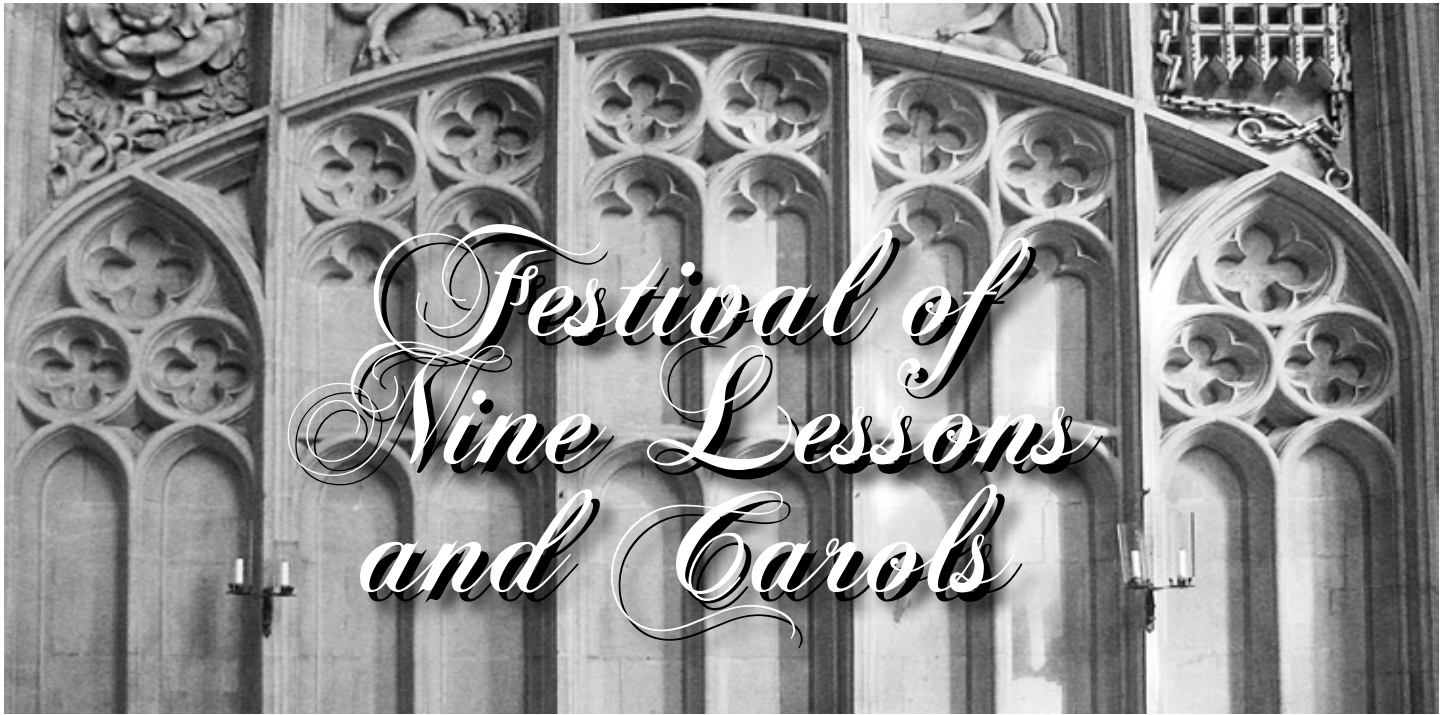
The Dolphin Gallery Holiday Boutique will be ready for shoppers on Tuesday of Thanksgiving Week, that's November 23, and will continue through December 26. We will only be closed on November 25 and December 25 so that our all-volunteer staff may enjoy these special days with their families. Hours on all other days are 10:00 a.m. to 5:00 p.m., 7 days a week.

We hope to see you this holiday season!

DOLPHIN GALLERY • 39225 Highway One • Gualala, CA • (707) 884-3896

GUALALA ARTS GIFT CERTIFICATES

**Increments of \$25 towards Gualala Arts purchases
(for art, membership, performances, etc...) are available now at the Gualala Arts
Office. The perfect gift for that hard-to-buy someone.
The gift that give and gives again!**



FRIDAY, DECEMBER 24, 2010
AT 5:00 P.M.
AT THE GUALALA ARTS CENTER

Following the form in which it has been offered each year since 1919 at King's College Chapel, Cambridge, England, the Festival of Nine Lessons and Carols will again be presented at the Gualala Arts Center auditorium this Christmas Eve at 5:00 p.m.

Past participating clergy and lay readers have represented several of the coast faith communities: Mary, Star of the Sea and St. Aloysius Catholic Churches of Gualala and Point Arena; Light of the Coast - Science of Mind Center, Gualala; St. Paul's Community United Methodist Church, Point Arena; Starcross Community, Annapolis; Shepherd of the Sea Episcopal - Lutheran Mission, Gualala. In addition several of our coast community children and youth will lend their gifts of leadership to this well-loved tradition and celebration.

The seating at the Gualala Arts Center is limited and traditionally fills up to standing room only. You are encouraged to plan ahead, arrive early and bring a flashlight for your safe walking to and from parking areas around the Arts Center.



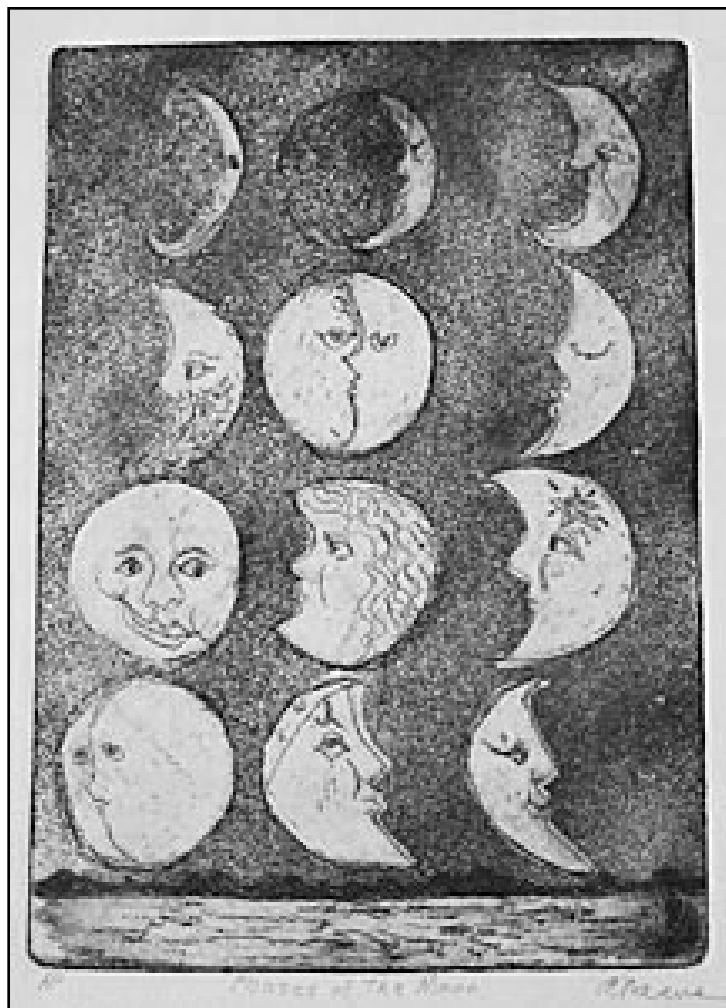
Arna Means, Printmaker

Local artist, Arna Means is excited about her etchings exhibit at Sea Ranch Lodge Front Gallery from November 18 through January 16, 2011. She is excited to show off some of her new work as well as new renderings of old favorites.

The etchings span a time period of 35 years. Although Arna had been involved in art and art education all her life, it was not until after college when she was living with her family on the Monterey Peninsula that she learned the art of the intaglio print.

During the sixties her husband, Robert Means and she had an art gallery and studios on Cannery Row where the aquarium stands today. One of the many artists who was involved with the gallery taught an etching class at the Carmel Art Center using an old modified printing press to pull the etchings. Arna found the discipline an exciting new means to express the line drawings she loved doing and, pursued studies further at San Francisco Graphics Art Studio, California College of Arts and Crafts, and more recently, at Crown Point Press in San Francisco. Over the years she has pulled hundreds of prints from her small press and shown them in galleries up and down the west coast. She has won several awards.

Arna has lived in Gualala for 23 years. She teaches art on the Kashia Pomo Reservation School and



works in many media in her home studio. Her home studio number is 707 884 1608 and her website is arnameans.com



SUPPORT THE ARTS

As a member of Gualala Arts, you support arts on the coast and support a gem of a building called the Gualala Arts Center. Have you ever considered this support after you are gone? You can continue your great work by putting us in your will or trust. By leaving a dollar amount or a percentage of your estate, you can continue the great work you have started by being a member now. Please consider this idea while talking to your lawyer or financial planner.

The Festival of Trees 2010



A fundraising event for Gualala Arts

Friday, November 26, 10:00 a.m. - 4:00 p.m.

Saturday, November 27, 10:00 a.m. - 4:00 p.m.

Gualala Arts' Seventh Annual Festival of Trees will be held Thanksgiving weekend, Friday, November 26 and Saturday, November 27, kicking off the Holiday Season on the Mendonoma Coast.

The entire Arts Center will be transformed into mid-19th Century Gualala. Highlights include festively decorated booths displaying handcrafted wares and demonstrations in both the Coleman Auditorium and the Burnett Gallery.

The Gualala Arts Interest Groups will again fill the Burnett Gallery with a wonderful display of crafts handmade by our own Pacific Piecemakers Quilt Guild, Fiber Arts Group, Woodcarvers and Woodworkers groups, Basket Makers and Beads n' Beyond.

In the Coleman Auditorium, visitors will discover several artists offering their beautiful crafts, including Joan Rhine Designs jewelry, Jennie Henderson's Fancy Fibers, Jan Maria Chiappa's Which Craft Workshop pottery, Shirley Egerlund of Caz Gal Soaps, Bill and Sue Halderman's Birdhouses, Patrick Alessandri's Regimental Colours toys, Walt Rush Studio's jewelry. Artists new to the Festival of Trees this is year are Cinnabar Ceramics by Geoff Graham; De Tie Dye Lady, De Williams, Scarves by Jeanne Gadol, Country Store Kirby Leary's note cards, botanical prints & earrings, Red Dog Ranch Rubs & Dog Bones.

New to the Festival this year is the Gualala Arts Company Store located on stage in the Coleman Auditorium. A variety of goods to tempt you, to perhaps create your own gift basket, will be on sale from Lisa's Luscious Jams, or The Mustard Mistress special mustards, Candles and More by Barbara Tocher, Barbara Dunsmoor's hand crafter paper boxes and the California Coastal Monument's C.D. All of these products are locally made for your delight. And of course what would a gift basket be without that special something from Gualala Arts such as a hand

dyed tee shirt?

Upstairs, the Magical Gingerbread House offers activities and crafts for children. The Magical Gingerbread House will be open from 11:00 a.m. - 3:00 p.m. on Friday and Saturday.

Throughout the Festival, visitors will enjoy live musical entertainment. Schedules for the entertainment will be posted at Gualala Arts before the Thanksgiving Holiday. For the delight of children of all ages there will be daily visits from Santa Claus, between 1:00 - 3:00 p.m.

Holiday cookies, breads, puddings, fruitcake and an assortment of confections will be available for sale at Mrs. Claus' Bake Shoppe & Confectionery. Local bakers and candy makers donate goods from their favorite holiday recipes (many handed down through the generations) to this appetizing shop.

Festival-goers will be greeted in the foyer by the Old Gualala Mill Cookhouse serving fresh coffee cake in the morning, and hearty homemade vegetarian chili with hot cornbread, George Marshall's award-winning clam chowder with real sourdough bread for lunch, as well as fresh coffee, hot chocolate, chilled apple juice, and hot-spiced apple cider. For the adults, there will be the yummy winter beverage available, called "Scrumpy."

Refreshed, you may continue shopping for that perfect gift and take a closer look at the beautifully decorated Fantasy Forest. Again this year, Vickie Hodge and Tom Mc Eneany will work their magic creating beautiful table top Christmas trees decorated with exquisite ornaments and available for sale by silent auction. Trees will be set-up in the Gualala Arts Center foyer by November 24th for preview.

Come, relax and enjoy the Festival of Trees!

ARTISTS: Have you sent in the Artist's Survey?
Help us serve you better.

<http://gualalaarts.org/Forms>

GUALALA ARTS PRESENTS

New York New Year's Eve
Friday, December 31, 7:00 p.m.
at the Gualala Arts Center



Spend
New Years Eve
In Style with Gualala Arts
**New York
New Years
Eve**

By popular request, Gualala Arts will again host the New York New Year's Eve party.

The concept of this New Year's Eve party seems to fit the Coastal life style as many people don't like to be coming home past midnight, dodging deer and negotiating the windy highways.

As the ball drops in New York, the New Year is also celebrated in the Coleman Auditorium with bubbly, of course, coffee and a decadent desert at 9:00 p.m. Pacific Standard Time.

This evening of evenings will kick off Gualala Arts year-long celebration of 50 years of Art in the Redwoods!

The doors will open at 7:00 p.m. with strolling dinner stations where you can choose your favorites. The Culinary Guild is still working out details, but, looking back, they have a winning record of always choosing dinners that are enjoyable. All lovingly prepared and homemade! There will also be a martini bar, micro brews, fine wines and "Mock-tails" for purchase throughout the night. Fred Adler, well-known KTDE 100.5 FM radio personality, will provide "Classic New Year's Eve Musical Standards."

One of the truly enjoyable ways to plan the evening is

purchasing a table of six or eight, and then sharing the costs with everyone. Bringing in the New Year among friends is one of the joys of living in a small close-knit community. If you are more adventurous and like to meet new people, buy single or couple tickets and be seated with others who enjoy our beautiful coastal lifestyle. As small as our community is, there is always someone new to meet or get to know better.

The all-inclusive evening is \$50 per person. For advance purchase, go to Brown Paper Tickets or call them at 800-838-3006. To purchase in person, visit the Gualala Arts Center or Dolphin Gallery in Gualala.



Having Guests?

Check out **Visitor Info**

If you have out of town guests, our website, **GualalaArts.org**, has several online lists that could make planning their visit a little easier. On the left menu you will see an item, *Visitor Info*. This webpage lists

- Lodging
- Food near Gualala
- Art Galleries
- Info on the Arts

The *Info on the Arts* section will take you to information not only about our local area, but will cover arts and more areas of interest in Mendocino and Sonoma County.

Have an old PC in your closet? Donate it to the Gualala Arts Library! They need a Win98 PC.

Open Clay Studio

The clay studio offers a drop-in Open Studio facility for local artists and visitors, where they can learn how to make and decorate hand-built pottery items.

**The Studio is open
Monday - Friday,
10:00 a.m. - 4:00 p.m**

There is an instructor on site during all open studio hours

50 YEARS OLD!

Gualala Arts will be 50 years old in 2011. Planning our celebration, we are gathering history and photos. We would love your photos related to Gualala Arts and your help identifying the photos we have.

Having a CD (or DVD) of your digital images would be wonderful. It would be even more wonderful with the identifying information in a Word file on the same disk. Be sure to mark the CD with your name and phone number.

If that is not possible, please bring copies of your treasures in an envelope labeled with your name and phone number to the Gualala Arts Office.

PLEASE NOTE

Sunday, December 26 - Sunday, January 9
Special Holiday Hours from noon to 4:00 p.m.

Gualala Arts Center is closed to the public (grounds & trails remain open)

- Thursday, November 25
- Saturday, December 25

ARTICLES FOR JANUARY'S
SKETCHES ARE DUE
DECEMBER 1, 2010.



BOARD OF DIRECTORS

Michele Marshall, President
Helen Klembeck, Vice President
Martha Wohlken, Secretary
Don Krieger, Treasurer

David 'Sus' Susalla, Executive Director

Board Members: Phil Atkins, David Bower, Betsi Carey, Steve Carnes, Barbara Duns Moor, Russell Hardy, Nancy Kyle, Mike Mee, Gerda Randolph, Bill Retzer, Susan Sandoval, Rich Schimbor

Promoting public interest and participation in the arts since 1961.



SKETCHES

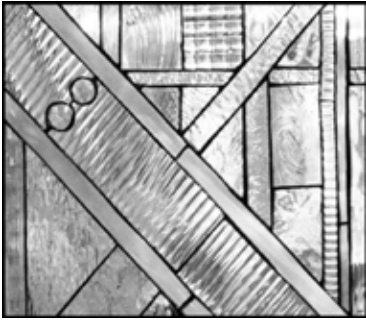
Editor: Gualala Arts Staff
Art Director: P.T. Nunn
Workshop Catalog: Barbara Pratt
Copy Editor: Dave Jordan
Mailing Staff: Suzanne Hansen, Joyce Omer, Don Omer, Sharon Jones, Ginger Alexander, Bobbie Penney, Diane Cunningham, Marilyn Balch, Trudy Armer, Linda Frye, Helen Klembeck, Sharon Nickodem, Sonja Thiene, and Colleen Jackman



Sketches is printed on 100% recycled paper out of concern for the planet. Taking care of trees is a part of our job.

Copyright © 2010 Gualala Arts, Inc.

A MESSAGE FROM OUR DIRECTOR



*Thank you
Volunteers & Patrons!*

As another year comes to a close and a new one approaches, it seems fitting to honor and express our gratitude to those individuals who ensure the success of the arts programming of our coastal area through Gualala Arts – our Patrons and Volunteers. Since the inception of Art in the Redwoods in 1961 and the opening of the Gualala Arts Center in 1998, our volunteers and patrons have been the backbone of the arts in our community.

Our volunteers serve us in many areas, from working on building projects and maintenance, taking tickets, poster distribution, newsletter mailings, sound and light tech, housing entertainers and artists, providing refreshments, hanging gallery exhibits, planning events and fundraisers, staffing the Dolphin Gallery & Gift Shop, acting in our productions, serving on various committees and board of directors. The list of volunteer opportunities and activities is endless.

Over the last half-century we have experienced many ups and downs, but we have persevered in our quest to provide visual and performing arts events for our community. As we approach our next 50 years, we do so with some trepidation as the financial state of the country puts the arts in peril. Last year your member donations were generous and enabled us to continue programming and keep the doors open 363 days in 2010. We would like to express our appreciation for YOUR continued financial and volunteer support. You secure the existence of Gualala Arts and enhance the quality of life in our community.

When asked how we have managed to survive over the years when so many other organizations have had to severely cut programs or close their doors during these stressful economic times, the answer has always been the same: dedicated volunteers combined with the generosity of our patrons' donations.

We thank you for your contribution in previous years and ask you to consider responding as generously as possible to this year's fundraising drive.

Sus

David Sus Susalla
Executive Director

CALENDAR OF EVENTS IN DECEMBER

Through	-26	Boutique	Dolphin Gallery Holiday Boutique
Saturday	4	Concert	A Holiday Concert for the Coast
Saturday	4-	Exhibit	Opening Reception: Artisans' Co-op at Bodega
Friday	17	Performance	Christmas Show
Friday	24	Festival	Festival of Nine Lessons and Carols
Saturday	25	Closed	Arts Center is closed on Christmas Day
Sunday	26	Note Hours	Holiday Hours - Noon to 4:00 p.m.
Friday	31	Celebration	New York New Year's Eve

UPCOMING EVENTS IN JANUARY

Friday	7-	Exhibit	Opening Reception: Dolled Up
Saturday	8-	Exhibit	Opening Reception: Frances Alman & Tom Haines
Monday	10	Lecture	Rock Formations
Sunday	16	Concert	David McCarroll & Roy Bogas
Monday	17	Lecture	Weather

Gualala Arts Center is open 9:00 a.m. - 4:00 p.m. weekdays, 12:00 noon - 4:00 p.m. weekends
Sunday, December 26 - Sunday, January 9 Gualala Arts has Special Holiday Hours from noon to 4:00 p.m.



46501 Gualala Road
 P.O. Box 244
 Gualala, Ca 95445

707.884.1138
info@GualalaArts.org
www.GualalaArts.org

U.S. Post Paid
 Nonprofit Org.
 Permit #1
 Gulalala, CA
 95445