



NOVEMBER 2010 SKETCHES



DIWALI: FESTIVAL OF LIGHTS
DANCE IN THE REDWOODS
FRANK WIENS, PIANO

DOLPHIN HOLIDAY BOUTIQUE
LECTURE: MAGGIE WATSON
FESTIVAL OF TREES

DANCE IN THE REDWOODS

SAN FRANCISCO BALLET SCHOOL TRAINEE PROGRAM
FRIDAY, NOVEMBER 12, 7:30 P.M.
SATURDAY, NOVEMBER 13, 2:30 P.M.
AT THE GUALALA ARTS CENTER

Gualala Arts is delighted to present the inaugural Dance in the Redwoods featuring twelve young dancers from the San Francisco Ballet School Trainee Program.

Participation in the Trainee Program is by invitation from San Francisco Ballet Artistic Director Helgi Tomasson, and School Associate Director Lola de Avila. Students are selected from around the world and range in age from 16 - 19 years old. Wendy Van Dyck, former Principal Dancer of San Francisco Ballet, coordinates this comprehensive program preparing the students for their professional careers.

We invite you to enjoy this opportunity to be among the first to glimpse the ballet stars of tomorrow!

sponsors Reception:

Friday, November 12, 6:30 p.m. (must have Sponsor Ticket)
Saturday, November 13, 1:30 p.m. (must have Sponsor Ticket)

\$78 Sponsor Ticket includes:

- Performance for either Friday or Saturday
- Doors open one hour prior to performance so you can choose your seats
- Open wine bar & appetizers

\$28 General Admission

Doors open 30 minutes prior to performance

\$18 Youth 7-17

Doors open 30 minutes prior to performance



Performances are part of the Mendocino County Wine & Mushroom Festival.

Sketches 2

Diwali: Festival of Lights



Friday, November 5, 2010
Gualala Arts Center

\$35 advance, \$5 more after October 29
For more info or tickets purchase, go to
GualalaArts.org

Diwali is an important festival in Hinduism, celebrated with great enthusiasm and happiness in India. The festival is celebrated for five continuous days, where the third day is celebrated as the main Diwali festival or 'Festival of Lights.'

On this auspicious day, people light up diyas and candles all around their house. Diya can be defined as a small earthen lamp that is specially lit on Diwali for puja and decoration purposes. A cotton wick is used in diyas, and oil or ghee serves as the burning fuel. It is basically a symbol of the victory of good over evil, brightness over darkness, and truth over falsity.

5:30 p.m. Offering
6:00 p.m. Appetizers & Dance Performance
7:00 p.m. Dinner
8:00 p.m. Dessert & Fashion Show
9:00 p.m. Dandia Ras (open dance)

Internationally reknowned performer and choreographer Jyoti Rout and her dancers will perform Laxmi Puja in the evening and seek divine blessings of Goddess of Wealth.

Jyoti Kala Mandir (mandir is a Hindi word for temple) was founded in 1993 by noted performer and choreographer Jyoti Rout to promote Odissi through classes and performances in the Bay Area and beyond. JKM's mission is to continue the spiritual essence of Odissi, originally a temple dance, in its transition to the stage. Jyoti Rout encourages her students to view their dance as an offering to the divine.

More information about Jyoti Kala Mandir can be found on www.jyotikalamandir.org.

A vegetarian dinner is planned using the spices, herbs and vegetables used in Indian cuisine and a fashion show of saris.

GUALALA ARTS CHAMBER MUSIC SERIES PRESENTS



Frank Wiens Piano

Sunday, November 14, 2010

4:00 p.m.

The Gualala Arts Center

Critical acclaim has greeted the performances of pianist Frank Wiens, who will perform at Gualala Arts Center on November 14, 2010 at 4:00 p.m. Wiens has concertized extensively throughout the United States and abroad, including highly praised recitals in New York and London. He has twice toured South Korea, and gave his recital debut on the European continent in Vienna in 1987. He was invited to tour the Soviet Union in 1991 as a featured soloist in concerts celebrating the 100th anniversary of the birth of Serge Prokofiev.

In 2006 Frank Wiens appeared as soloist with the "Orchestra Dinu Lipatti" in Romania, and gave recitals devoted to the music of Chopin at the Chopin Academy and at the Lazienki Palace on Water in Warsaw, Poland.

With an extensive concerto repertoire of thirty-five works, he has been a soloist with such orchestras as the Atlanta, Denver and Detroit Symphonies. A winner of major awards in prestigious competitions - North American Young Artists Competition, Southwest Pianists Foundation Competition, Three Rivers Piano Competition - he has given annual concert tours across the U.S. since 1974. His performances have been broadcast on National Public Radio and Public Television, and he has been a touring artist with the Iowa Arts Council and the California Arts Council. His compact disc recording "Rachmaninov," which includes that composer's Third Piano Concerto with the Slovakia National Orchestra, has been described by one reviewer as "dazzling, yet rich in solid detail... brilliant clarity and absolute conviction... truly suave and elegant playing."

A native of New Haven, Connecticut, Frank Wiens studied at the University of Michigan School of Music, where he was the recipient of the Stanley Medal, that school's highest honor for musical excellence.

He has been a student of Benning Dexter, Gyorgy Sandor, Harald Logan, and John Perry and a participant in master classes with Lili Kraus and Leon Fleisher.

He served on the piano faculty at Drake University and, since 1976, has held the position of Professor of Piano at the University of the Pacific in Stockton, California. In 1997 he was honored with that University's Distinguished Faculty Award, and in 2000 with its Faculty Research-Lecturer Award.

In addition to his active concert schedule, Frank Wiens has gained renown for his master classes and lectures. He has adjudicated numerous piano competitions, and has served as a member of the international jury of the prestigious Gina Bachauer International Piano Competition.



This concert is part of the Mendocino County Wine & Mushroom Festival.

\$25 advance, \$5 more day of concert
Young people ages 7 through 17 admitted free.

For more info or tickets purchase, go to
GualalaArts.org

Dolphin Gallery Holiday Boutique

TUESDAY, NOVEMBER 23 - SUNDAY, DECEMBER 26, 2010
OPEN 10:00 A.M. - 5:00 P.M. DAILY,
EXCEPT NOVEMBER 25 & DECEMBER 25



Fall and winter are exciting times on the north coast! As if the whale migration and our spectacular sunsets were not exciting enough, the Dolphin Gallery Holiday Boutique opens just before Thanksgiving!

The Boutique keeps getting better each year and this year promises to continue that tradition as we welcome a wide variety of wonderful handcrafted pieces such as jewelry, home décor, seasonal baubles, knitted or stitched accessories, small art works, and numerous other items.

The Dolphin Boutique is a unique place to bring your gift list (or your wish list!) and spend some time shopping and chatting with the friends and neighbors you will probably find there. Since other items are

frequently brought in to replace those that have sold, you may want to drop in on a regular basis to make sure you don't miss that "perfect" gift!

Dolphin Gallery Holiday Boutique Dolphin Gallery Holiday Boutique The Dolphin Gallery Holiday Boutique will be ready for shoppers on Tuesday of Thanksgiving Week, that's November 23, and will continue through December 26. We will only be closed on November 25 and December 25 so that our all-volunteer staff may enjoy these special days with their families. Hours on all other days are 10:00 a.m. to 5:00 p.m., 7 days a week.

We hope to see you this holiday season!

Holiday Boutique Take-In

If you want to place your handcrafted items in the Holiday Boutique for consignment sales, you should bring them to the Dolphin either on Sunday, November 21, between Noon and 4:00 p.m., or on Monday, November 22, between 10:00 a.m. and 4:00 p.m. We are adding Sunday this year to better accommodate those with conflicting work schedules. Please mark your calendars now so you don't miss participating in this fun event!

Please call the Dolphin Gallery at (707) 884-3896 if you have any questions about participating in the Boutique. Be sure to leave your phone number so someone can call you back!



**SHEPHERD
AND EMORY**
ON EXHIBIT AT
THE DOLPHIN GALLERY
THROUGH
NOVEMBER 19



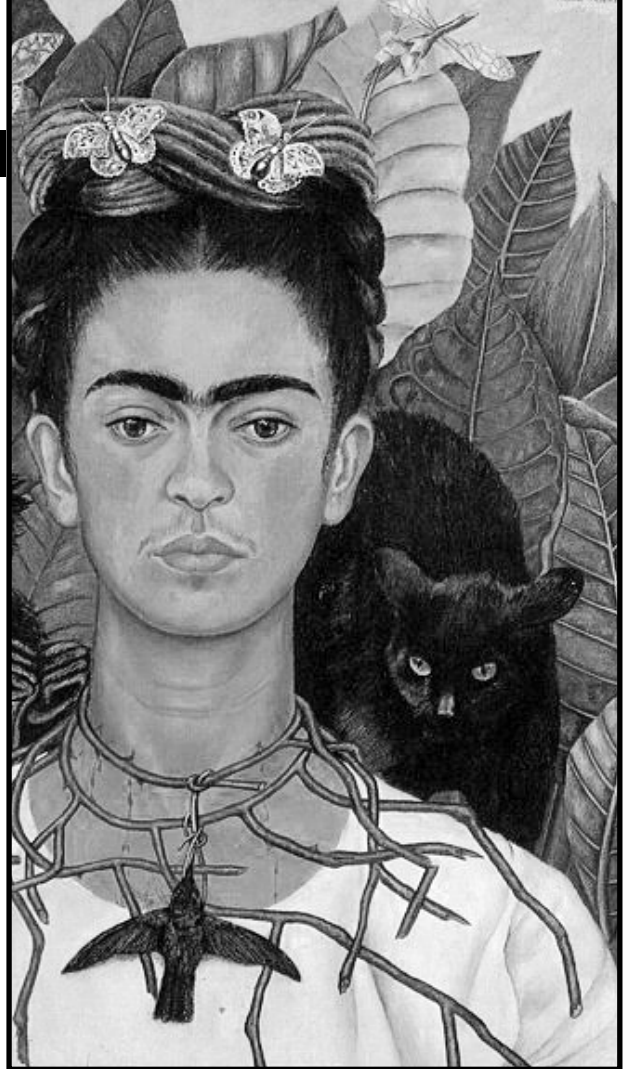
Gualala Arts Global Harmony Series:
Encouraging global harmony by sharing cultures through the arts

DÍA DE LOS MUERTOS
DAY OF THE DEAD

SUNDAY, OCTOBER 31, 2010
4:00 TO 7:00 P.M.
GUALALA ARTS CENTER

Complementing the celebration will be an exhibit of shrines and the exciting return of the Los Caporales de Santa Rosa Mariachi troupe performing with the Coast Folkloric Dancers. Authentic Mexican food and drinks will be available for purchase.

As part of Day of the Dead, there will be a **Frida Kahlo and Diego Rivera costume contest** for adults. The judges expect a lot of eyebrows for Frida and vibrant colors for Diego. First place winner will receive a decorated sugar skull and a proof photo donated by Lucienne and David Allen. Second place winner will receive a decorated sugar skull.



This activity is funded in part by the California Arts Council, the Department of Justice, state agencies, as well as the National Endowment for the Arts, a federal agency.



Call for Auditions

HONK!

Music by George Stiles
Book and Lyrics by Anthony Drewe
Based on "The Ugly Duckling" by Hans Christian Andersen



Auditions

November 6 & 7, 2010, 1:00 p.m.
Speaking / singing roles for men, women & children (age 7 and older).
Contact Lynne Atkins 884-3838 for information.

Rehearsals

Private Coaching for leads - November & December
Choral rehearsals: December & January
Full production rehearsals: January & February
The performances will be in February at the Gualala Arts Center.

Based on Hans Christian Andersen's "The Ugly Duckling," "Honk!" tells the story of an odd looking baby duck, Ugly, and his quest to find his mother.

FIVE POINT ARENA OIL PAINTERS:

DAVID LEWIS, LESTER DA GRADI, MINDY EISMAN,
BILL ELMORE AND JON HANDEL



Gualala Arts presents an exhibit in the Front Gallery at The Sea Ranch Lodge featuring the work of five oil painters inspired by the Peter Dobbins' new book, *Point Arena Oil, Six Local Painters*. Five of the six painters in the book will be exhibiting: **David Lewis, Lester Da Gradi, Mindy Eisman, Bill Elmore and Jon Handel.**



The exhibit at the Lodge is a rich variety of local

themes. *Iris* by Bill Elmore, *Point Arena Pier Moments* by David Lewis, Manchester Beach scenes by Lester Da Gradi, a whimsical touch from Jon Handel includes a painting titled *Floating Between Point Arena and Gualala*. Mindy Eisman has done two portraits of Franny (above) of Franny's Cup and Saucer Bakery in Point Arena, as well as two coastal themes including one called *Nine to Five* which tracks the sun over the ocean, a view from



her studio high up on the ridge above Schooner Gulch.



The book, *Point Arena Oil, Six Local Painters*, is the first in a series of self-published books Peter Dobbins plans to do of local artists. The next one, already in the works, will be on pastel and pencil artists from The Sea Ranch to Point Arena.

Stimulated by his interest in history and local history, Peter, an award-winning Point Arena photographer, has an eye for capturing the artists at work in their studios or outdoors painting. The book is available for \$40 from Peter directly or can be purchased through **Four-Eyed Frog Books** in Gualala. Contact Peter at pdobbins@mcn.org or (707) 882-2159.

Gualala Arts Lecture Series

A Graceful Farewell with Maggie Watson

Although the thought of dying is not a pleasant one, Maggie Watson's talk, on November 1 at 7:00 p.m. can ease the trauma associated with this difficult topic. Knowing one's intentions for possessions are organized and planned can provide peace of mind and comfort.

Drawing on her book and accompanying CD, "A Graceful Farewell," Maggie can help you prepare for the eventuality of someone passing. She will cover the information an executor will need, such as insurance, medical, financial, and household details.

She will discuss writing wills, trusts, advanced directives, and power of attorney documents. On a more personal level she has helpful ways to convey specific instructions and tools to encourage communication among family members and even ideas on how one can plan his or her own funeral. Facing the eventuality of death when one can think clearly eases the process for the individual as well as



Monday, November 1, 7:00 p.m.
Admission is \$5

for the family and friends, provided there has been proper planning. Maggie will outline the necessary steps in a format easy to understand and follow. Ten years ago she learned first hand what could happen when someone dies without leaving clear and organized instructions.

The author lives in Little River. In 2005, Cypress House in Fort Bragg first published her book and accompanying CD. She has worked as a professional organizer since 1985 and currently specializes with the elderly and infirm. More information can be found at her web site - www.agracefulfarewell.com.

The Mendonoma coast is home to many retirees for whom this information is invaluable and this talk is an opportunity to deal with the difficult subject without the stresses that inevitably accompany a terminal illness. It is especially important if one's family is not in the area.

The Festival of Trees 2010

A sampling of the vendor booths showcasing local artists.



Sketches 8





The Festival of Trees 2010

A fundraising event for Gualala Arts

Friday, November 26, 10:00 a.m. - 4:00 p.m.

Saturday, November 27, 10:00 a.m. - 4:00 p.m.

Gualala Arts' Seventh Annual Festival of Trees will be held Thanksgiving weekend, Friday, November 26 and Saturday, November 27, kicking off the Holiday Season on the Mendonoma Coast.

The entire Arts Center will be transformed into mid-19th Century Gualala. Highlights include festively decorated booths displaying handcrafted wares and demonstrations in both the Coleman Auditorium and the Burnett Gallery.

The Gualala Arts Interest Groups will again fill the Burnett Gallery with a wonderful display of crafts handmade by our own Pacific Piecemakers Quilt Guild, Fiber Arts Group, Woodcarvers and Woodworkers groups, Basket Makers and Beads n' Beyond.

In the Coleman Auditorium, visitors will discover several artists offering their beautiful crafts, including Joan Rhine Designs jewelry, Jennie Henderson's Fancy Fibers, Jan Maria Chiappa's Which Craft Workshop pottery, Shirley Egerlund of Caz Gal Soaps, Bill and Sue Halderman's Birdhouses, Patrick Alessandri's Regimental Colours toys, Walt Rush Studio's jewelry. Artists new to the Festival of Trees this is year are Cinnabar Ceramics by Geoff Graham; De Tie Dye Lady, De Williams, Scarves by Jeanne Gadol, Country Store Kirby Leary's note cards, botanical prints & earrings, Red Dog Ranch Rubs & Dog Bones.

New to the Festival this year is the Gualala Arts Company Store located on stage in the Coleman Auditorium. A variety of goods to tempt you, to perhaps create your own gift basket, will be on sale from Lisa's Luscious Jams, or The Mustard Mistress special mustards, Candles and More by Barbara Tocher, Barbara Dunsmoor's hand crafter paper boxes and the California Coastal Monument's C.D. All of

these products are locally made for your delight. And of course what would a gift basket be without that special something from Gualala Arts such as a hand dyed tee shirt?

Upstairs, the Magical Gingerbread House offers activities and crafts for children. The Magical Gingerbread House will be open from 11:00 a.m. - 3:00 p.m. on Friday and Saturday.

Throughout the Festival, visitors will enjoy live musical entertainment. Schedules for the entertainment will be posted at Gualala Arts before the Thanksgiving Holiday. For the delight of children of all ages there will be daily visits from Santa Claus, between 1:00 - 3:00 p.m.

Holiday cookies, breads, puddings, fruitcake and an assortment of confections will be available for sale at Mrs. Claus' Bake Shoppe & Confectionery. Local bakers and candy makers donate goods from their favorite holiday recipes (many handed down through the generations) to this appetizing shop.

Festival-goers will be greeted in the foyer by the Old Gualala Mill Cookhouse serving fresh coffee cake in the morning, and hearty homemade vegetarian chili with hot cornbread, George Marshall's award-winning clam chowder with real sourdough bread for lunch, as well as fresh coffee, hot chocolate, chilled apple juice, and hot-spiced apple cider. For the adults, there will be the yummy winter beverage available, called "Scrumpy."

Refreshed, you may continue shopping for that perfect gift and take a closer look at the beautifully decorated Fantasy Forest. Again this year, Vickie Hodge and Tom Mc Eneany will work their magic creating beautiful table top Christmas trees decorated with exquisite ornaments and available for sale by silent auction. Trees will be set-up in the Gualala Arts Center foyer by November 24th for preview.

Come, relax and enjoy the Festival of Trees!

NEWS FROM THE INTEREST GROUPS

Groups meet at Gualala Arts Center unless indicated. Details are on the website GualalaArts.org/Groups

Gualala Arts Book Club

► Wednesday, November 10, 10 a.m.
rsvp Mary Suhr 785-2959
► Thursday, November 18, 1:30 p.m.
rsvp Nancy Strain Traylor 884-3305
The selection for November: *"The Guernsey Literary Potato Peel Pie Society"* by M.A. Shaffer & A. Barrows

Readers Theater

Tuesday, November 2, 7:00 p.m.
"Glimpses of Heaven and Hell on the North Coast" - plays by Dennis Carter
Listeners are always welcome.
Dennis Carter 785-1966

Open Clay Studio

The clay studio offers a drop-in Open Studio facility for local artists and visitors, where they can learn how to make and decorate hand-built pottery items.

The Studio is open
Monday - Friday,
10:00 a.m. - 4:00 p.m.

There is an instructor on site during all open studio hours

"Talking About Art" Discussion Series

Thursday, October 28 at 7:00 p.m.
Gualala Arts conference room.

Topic: *What is Art?*

If you were to ask ten artists to give you a precise definitive explanation of exactly what constitutes art, you would likely get back ten at least somewhat incompatible definitions. Webster's says art is an acquired skill, a branch of learning, one of the humanities, the conscious use of skill and creative imagination, and so on.

The important question is what do artists mean when we speak of art? Are we just referring to painting, drawing, sculpture, music and dance? Or are the boundaries of "true art" just too fuzzy and too dependant upon our individual life experiences to be precise?

The topic is merely a point of departure and the conversation can, and frequently does, veer off in strange and wonderful

directions. We encourage everyone to attend who wants to talk about art and also those who just want to listen. There is no fee for this series, but donations to Gualala Arts are always welcome.

Having Guests? Check out **Visitor Info**

If you have out of town guests, our website, GualalaArts.org, has several online lists that could make planning their visit a little easier. On the left menu you will see an item, *Visitor Info*. This webpage lists

- Lodging
- Food near Gualala
- Art Galleries
- Info on the Arts

The *Info on the Arts* section will take you to information not only about our local area, but will cover arts and more areas of interest in Mendocino and Sonoma County.



Articles for December's Sketches are due Monday, Nov 1, 2010.

BOARD OF DIRECTORS

Michele Marshall, President
Helen Klembeck, Vice President
Martha Wohlken, Secretary
Don Krieger, Treasurer

David 'Sus' Susalla, Executive Director

Board Members: Phil Atkins, David Bower, Betsi Carey, Steve Carnes, Barbara Duns Moor, Russell Hardy, Nancy Kyle, Mike Mee, Gerda Randolph, Bill Retzer, Susan Sandoval, Rich Schimbor

Promoting public interest and participation in the arts since 1961.

SKETCHES

Editor: Gualala Arts Staff
Art Director: P.T. Nunn
Workshop Catalog: Barbara Pratt
Copy Editor: Dave Jordan
Mailing Staff: Bev Sloane, Suzanne Hansen, Joyce Omer, Don Omer, Sharon Jones, Ginger Alexander, Bobbie Penney, Diane Cunningham, Marilyn Balch, Trudy Armer, Linda Frye, Helen Klembeck, Sharon Nickodem, Sonja Thiene, and Colleen Jackman



Sketches is printed on 100% recycled paper out of concern for the planet. Taking care of trees is a part of our job.

Copyright © 2010 Gualala Arts, Inc.





GUALALA ARTS
GLOBAL HARMONY
SERIES:

ENCOURAGING
GLOBAL HARMONY BY
SHARING CULTURES
THROUGH THE ARTS

Rupa & the April Fishes

Saturday, October 23, 2010 at the Gualala Arts Center
6:30 p.m. Doors open, 7:30 p.m. Performance



UNTIL NOVEMBER 14

BURNETT GALLERY
The Beauty of the Beast

FOYER
Eileen Borgeson

COMING SOON

50 YEARS OLD!

Gualala Arts will be 50 years old in 2011. Planning our celebration, we are gathering history and photos. We would love your photos related to Gualala Arts and your help identifying the photos we have.

Having a CD (or DVD) of your digital images would be wonderful. It would be even more wonderful with the identifying information in a Word file on the same disk. Be sure to mark the CD with your name and phone number.

If that is not possible, please bring copies of your treasures in an envelope labeled with your name and phone number to the Gualala Arts Office.



CALENDAR OF EVENTS IN NOVEMBER

Monday	1	Lecture	A Graceful Farewell with Maggie Watson
Friday	5	Festival	Global Harmony Series: Diwali - Festival of Lights
Sat-Sun	6-7	Auditions	Auditions for "Honk!"
Fri-Sat	12-13	Performance	Dance in the Redwoods - San Francisco Ballet School Trainee Program
Sunday	14	Concert	Chamber Music Series: Frank Wiens, piano
Tuesday	23-	Boutique	Dolphin Gallery Holiday Boutique
Fri-Sat	26-27	Festival	Festival of Trees 2010

UPCOMING EVENTS IN DECEMBER

Through	-26	Boutique	Dolphin Gallery Holiday Boutique
Saturday	4	Concert	A Holiday Concert for the Coast
Saturday	4	Exhibit	Artisans' Co-op at Bodega
Friday	17	Performance	Christmas Show
Friday	24	Performance	Festival of Nine Lessons and Carols
Friday	31	Celebration	New York New Year's Eve

Gualala Arts Center is open 9:00 a.m. - 4:00 p.m. weekdays, 12:00 noon - 4:00 p.m. weekends



46501 Gualala Road
P.O. Box 244
Gualala, Ca 95445

707.884.1138
info@GualalaArts.org
www.GualalaArts.org

U.S. Post Paid
Nonprofit Org.
Permit #1
Gualala, CA
95445