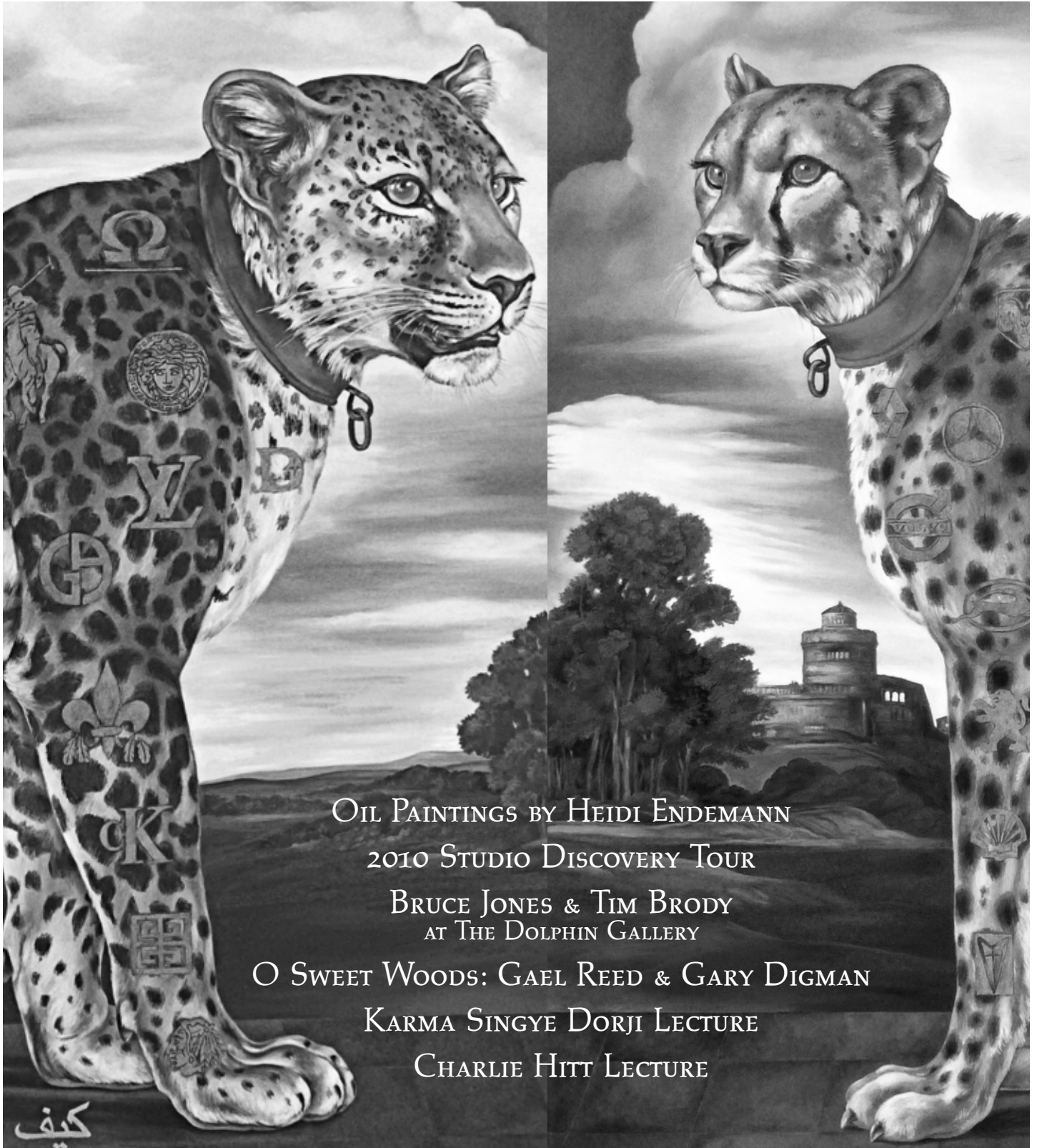




SEPTEMBER 2010 SKETCHES



OIL PAINTINGS BY HEIDI ENDEMANN

2010 STUDIO DISCOVERY TOUR

BRUCE JONES & TIM BRODY
AT THE DOLPHIN GALLERY

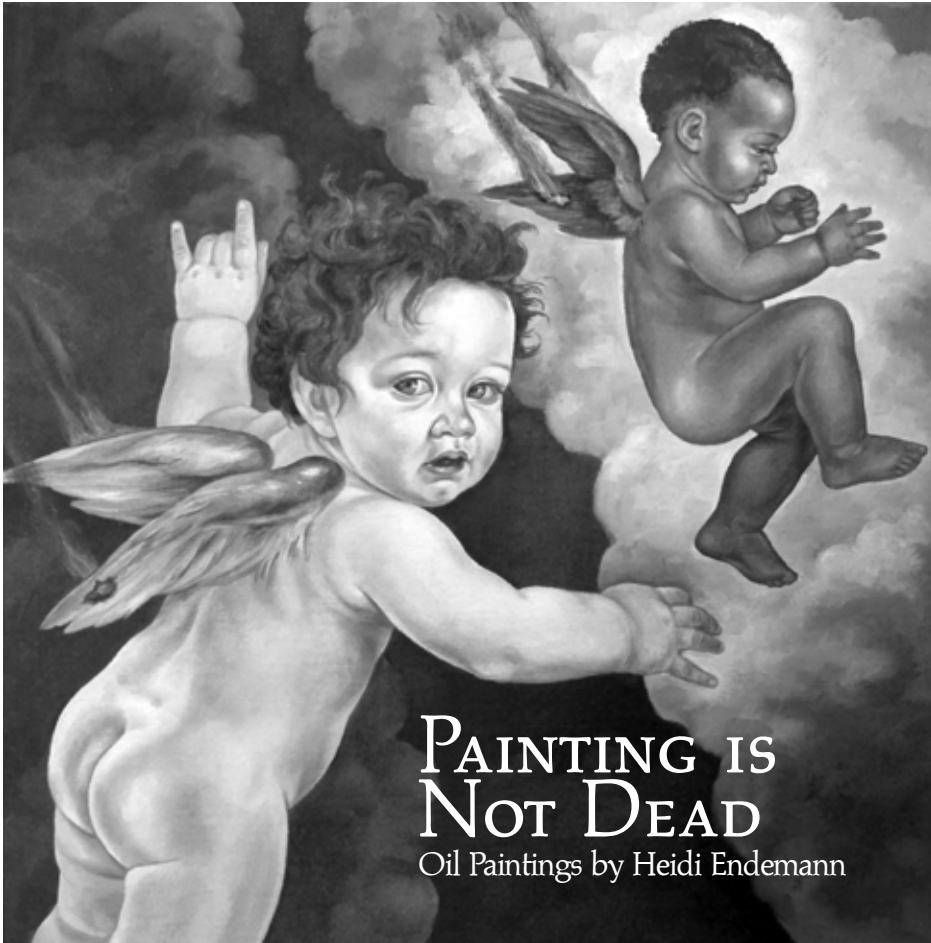
O SWEET WOODS: GAEL REED & GARY DIGMAN

KARMA SINGYE DORJI LECTURE

CHARLIE HITT LECTURE

PROUDLY SPONSORED BY ALAN & JANET COLEMAN

Burnett Gallery in the
Gualala Arts Center



Opening Reception:
Saturday
September 11, 2010
5:00 p.m. - 8:00 p.m.

Exhibit remains through
October 3, 2010

Gualala Arts is thrilled to have a solo exhibit of Heidi Endemann's oil paintings in the Burnett Gallery and Jacob Foyer. This local painter is a treasure to our Mendocino Coast.

Heidi will be featuring a new series, called the "Icarus Project." It will consist of 70 individual panels, each measuring 16"x16". The "Icarus Project" is an ongoing series with no end in sight. In Greek mythology, Icarus, the son of Daedalus, who was escaping from Crete on artificial wings made for him by his father, flew so close to the sun that the wax with which his wings were fastened melted and he fell into the Aegean Sea. This project involves portraying children with Icarus' wings. "Blessed are the Children, for they light the way into the future in spite of our many assaults on them and the planet."

The 25 panel "Butterfly Project" will be on view. The "Butterfly Project" is part of the "Animals at Risk Series." It could just as well belong with the "Warming Trend Series." Butterflies are so delicate and sensitive to climate change. They are our warning, our canary in the coalmine. "Warming Trend" was begun in 1997 and Endemann is still evolving with the topic. Additional paintings from the "Animals at Risk" series and the "Warming Trend" series will be on display.

"Figurative paintings can acquire the responsibility of addressing social, environmental and political issues through visual parables. This combination has the potential to interact with, and make an impression on, a wider audience."

All these works are oil on linen.

ABOUT HEIDI ENDEMANN

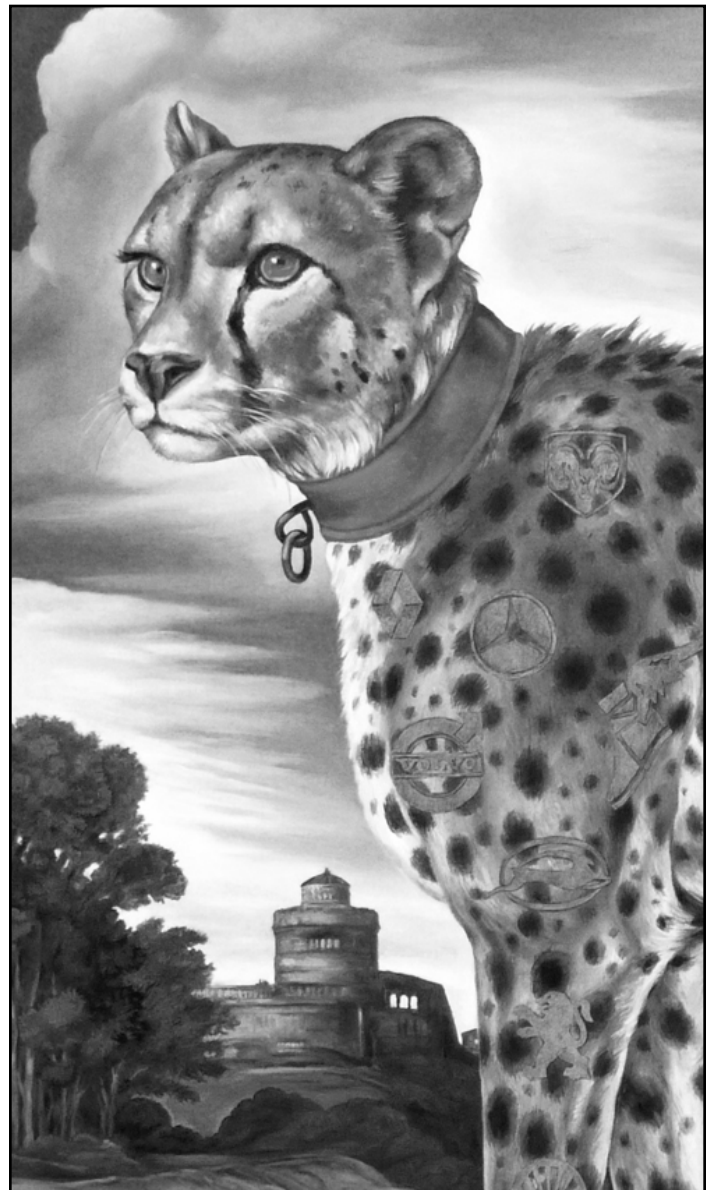
Heidi Endemann was born in Mannheim, Germany. Upon graduating from the Institute for Art and Design in Cologne, Heidi immigrated to the United States. Since 1972, Heidi and her husband, Don, have lived in Gualala, CA. Heidi has always painted, while also being consumed by a career in commercial art. The move to Gualala helped Heidi give up the lucrative business side of her life and to finally paint full time. Heidi used watercolor as her painting medium for almost 20 years (partly because of the toxic nature of other media), but returned to her first love, oil painting, when her studio in Gualala was



completed in 1991.

Years ago, Heidi believed that art should be serene and peaceful as a contrast to our turbulent times. This philosophy slowly changed beginning in the mid-eighties. Because of her concern about the future of all living things on earth and man's involvement in causing the fragility, Heidi felt obligated and challenged as a thinking human being and as a painter (just as a writer might) to produce works with social, political and/or environmental relevance. Her intent is to create work that is beautifully and academically executed in order to seduce the viewer into a longer gaze, making room for a dialog as to its meaning.

Heidi has exhibited in Germany, and at many galleries in New York and California. She was the recipient of an Individual Fellowship from the National Endowment for Arts in 1989 and has taught at the Academy of Art College in San Francisco.



For more information about Heidi Endemann and her work, please visit her web site at **HeidiEndemann.com**

Proudly sponsored by Gualala Arts and a generous grant from Alan & Janet Coleman

Studio Discovery Tour

Labor Day weekend & the weekend after:
Saturday-Monday, September 4 - 6, 10:00 a.m. - 5:00 p.m.
Saturday-Sunday, September 11-12, 10:00 a.m. - 5:00 p.m.

Local artists invite you to visit them in their studios.

For the eighteenth year, the North Coast Artists' Guild has organized the Annual Studio Discovery Tour for Labor Day weekend and the following weekend.

Coastal artists once again open their private studios providing visitors with the chance to meet the artist in person, to see demonstrations, to ask questions and to purchase original and unique works of art. Artwork includes



paintings, sculptures, jewelry, ceramics, glass art, textiles, photography, iron work, murals and much, much more.

This free self-guided tour takes you at your own leisurely pace along the beautiful serene coastline

from Sea Ranch to Irish Beach. Along the roadside directional signs in bright yellow will help guide you in this adventure. The Discovery Tour catalog and map will coordinate with the numbered signs and is especially important when visiting the Sea Ranch artists because there is little directional signage along Highway 1 through Sea Ranch.

You can begin your adventure now by stopping at the Sea Ranch Lodge (southern border of the Tour) or the Artist's Collective in Elk (northern border of

Get your free color catalog



the Tour) to preview the work of Studio Tour artists and to pick up extra catalogs with maps. Catalogs will also be available at the Gualala Arts Center, the Mendocino Art Center, and various local galleries and businesses along the way. Also, check the websites **NorthCoastArtistsGuild.com** and **Studio-Tours.com** for updated information.

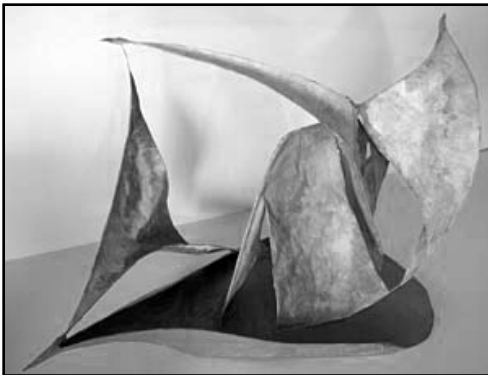


DOLPHIN GALLERY

CONSTRUCTIONS BY BRUCE JONES PASTELS BY TIM BRODY

OPENING RECEPTION: SATURDAY, SEPTEMBER 4, 2010, 5:00 P.M.
EXHIBIT REMAINS THROUGH SEPTEMBER 29

The Dolphin Gallery is pleased to show constructions by Bruce Jones and pastels by Tim Brody from the opening Saturday, September 4 from 5:00 to 7:00 p.m. through September 29, 2010.



ABOUT BRUCE JONES

I have been making paper mache constructions of all kinds for decades and carving

stone since 2004. I love the way working in three dimensions completely involves my mind. I can't think about anything else when I'm doing it and it takes a while think and act like human after I'm done.

Questions like "How do you decide what to do?" and "How do you know when you're done?" are easy to answer: I'm trying to find shapes that satisfy me. I love it when you can't keep your eyes and hands off a piece of sculpture - when you have never seen a shape like it before.

ABOUT TIM BRODY

I paint both in the studio and on location. Photorealism is not my goal; the particulars of a scene convey its unique qualities and essence. An abstract shape, an energy or tonality suggests an "idea." I hold

that "idea" in my mind's eye, allowing the painting to take on a life of its own.

For me, the natural world conveys immensity, power, impermanence and reconnection with our true spiritual nature, which is primordial wakefulness, clarity and spaciousness. The fine art of being present to this nature is the guiding principle in my art. I paint to express appreciation for the precious opportunity to be present in a human body on this wonderful life-sustaining planet. I hope these paintings convey this state of mind or presence and offer a sense of peace, stillness and equanimity.



to a



Pastel is pure dry pigment with binder to form sticks that range from hard to soft. It is the same pigment used in fine art paints (oil and watercolor), and is the most permanent of all media. I love pastel for the amazing and unique qualities of luminosity that can be achieved by applying multiple layers of pigment (consisting of very fine crystals) onto lightly sanded paper, which gives it the ability to blend optically in the viewer's eye in beautiful and surprising ways. It allows me to express my vision in a primal and direct manner like the ancient cave painters of Lascaux, transmitting the human spirit through touch using charcoal and pure pigments from the earth in an unbroken lineage from their time to ours.



O Sweet Woods

SUNDAY, SEPTEMBER 12, 2010 AT 4:00 P.M.

Gualala Arts will present a concert entitled "O Sweet Woods" on Sunday, September 12 at 4:00 p.m.

The concert will include music from the sixteenth to the twentieth century performed by Gael Reed, soprano and Gary Digman, lute, viola da gamba and guitar. Songs and instrumental works by Josquin Des Prez, Henry Purcell, John Dowland, Tobias Hume, Marin Marais and Matyas Seiber will be featured.

Gael Reed performs throughout Sonoma County in solo concerts as well as with the Coffee Concert Series, the Jarvis Conservatory Opera Nights and The National Association of Teachers of Singing (NATS) High Tea and High C concerts. Gael remembers as a child lying on her bed singing Anglican hymns at the top of her lungs. Her father would often suggest that she go sing them for the local minister who lived down the block (probably to get her out of the house!) Gael is a long time vocal student of Beth Freeman in Guerneville and is enormously grateful to her talented, gifted teacher, singer and friend. Beth can be heard singing with Gael on two

tracks of the CD, "Parlez-Moi d'Amour", a CD of French songs and Arias with Sonia Turbridy accompanying.

Gary Digman performed for many years as a jazz and classical guitarist and double bassist, Gary purchased a bass viola da gamba from the luthier Lyn Elder in 2000 after hearing Jordi Savall's playing in the French film, "Tous les Matins du Monde (All the Mornings of the World)." This, together with the acquisition of a ten-course lute, also made by Lyn Elder, has allowed Gary to continue a life-long interest in early music. He has studied guitar with John Mavreas in Chicago, Illinois, Fred Draper and Bill Pasquale in Davenport, Iowa and Joseph Bacon in San Francisco, California. He studied viola da gamba with John Dornenburg, and lute with Ed Martin. Gary is a member of the music faculty at Santa Rosa Junior College.

Tickets are \$15 in advance, \$5 more on the day of the performance. Youth 7 to 17 are admitted free. For advance purchase, go to **BrownPaperTickets.com** or call them at 800-838-3006. To purchase in person, visit the Gualala Arts Center or Dolphin Gallery in Gualala.

Local
eyes

Call to Artists: Beauty of the Beast

Registration forms are available at Art in the Redwoods. This exhibit celebrates the animals with whom we share our lives. It will also be an opportunity for the Redwood Coast Humane Society (RCHS) to raise awareness about its programs and educate the community about animal care.

All media - both two and three dimensional - and all interpretations of the exhibit theme are welcome.

For more info, visit **GualalaArts.org**.

Gualala Arts Lecture Series



BHUTAN: KINGDOM ON THE CUSP OF CHANGE WITH KARMA SINGYE DORJI

Monday, September 13, 2010, 7:00 p.m.

Admission is \$5

Bhutanese writer, speaker and tour leader Karma Singye Dorji presents the Himalayan kingdom

of Bhutan through the eyes of his Bhutanese family. Going beyond the headlines about Gross National Happiness, he will discuss what makes Bhutan truly special and how it is making its way into the modern world.

Long removed by choice and geography, Bhutan was a land apart. Not anymore. The recent experiments with modernity present a unique set of challenges for the last Himalayan kingdom and its people. Guiding this change, and providing the moral compass for the nation, is Bhutan's revered monarchy.

National policy discussions in Bhutan are dominated by three words: Gross National Happiness or GNH.

It is through GNH that the government seeks to meet the challenges of a rapidly modernizing state. The basic tenets of GNH include Buddhist respect for all sentient beings, promotion of social harmony through cultural appreciation, and the integrated practice of working together for the common good. But will the homogenizing forces of change and the burgeoning aspirations of a population increasingly exposed to the outside world bring unforeseen problems for a hitherto sensible way of life?

Learn how the situation is evolving, what forces of global change could make or break the fragile peace of this lovely, seemingly mythic country. Understand the battle for hearts and minds that has undeniably arrived at Shangri-La's door.

The presentation will include the images of local artist and photographer Jeanne Gadol, who traveled with Karma Singye Dorji through his homeland in 2009.



THE RIGHT TO VOTE WITH CHARLIE HITT

Monday, September 27, 2010,
7:00 p.m. Admission is \$5

Most Americans think little about voting and many do not bother even registering. If they were to learn the history of voting in America, many would

be shocked and none would take that right for granted again. This presentation on Monday, September 27 at 7:00 p.m. by Charlie Hitt entitled "The Right to Vote" comes as the midterm election heats up and will offer an interesting perspective on the franchise in America.

When Charlie Hitt was asked to talk to the Point Arena High School civics class about his experiences in the 2008 election as a representative of the Democratic Congressional Campaign Committee in North Carolina, he did some research on who had the right to vote and various restrictions that were placed on the process throughout our history. What he

uncovered will surprise all but the most ardent history buffs and will confirm that truth is stranger than fiction.

In an entertaining and informative manner, Hitt will explore the evolution of the vote from its origins based on property ownership to the role of slavery, and the franchise history for Blacks and women. For instance, although the right of women to vote in federal elections did not occur in this country until after a hundred year struggle and a world war led to the Nineteenth Amendment in 1920, each State and locality had widely different laws about women voting.

The talk will include historical cartoons and photos related to voting rights and Hitt will relate personal anecdotes from his work in North Carolina in November 2008 that offer a glimpse of how modern technology was used to curb voting abuses during that historic election.

A \$5 admission fee (not a poll tax) will be collected at the door.



2010 Art in the Redwoods Sponsors

Platinum Sponsor

Mary Sue Ittner & Bob Rutemoeller

Gold Sponsor

Alexander's at Timber Cove Inn
Annapolis Winery
Gualala Redwoods
Rams Head Realty & Rentals

Silver Sponsors

Anchor Bay Store
Gualala Supermarket
Lagunitas Brewing Company
Surf Supermarket

Bronze Sponsors

Alinder Gallery
Bill & CE Brown
Breakers Inn
www.BillsThrill.com
Dreyer's Charitable Foundation
Edward Tunheim & Merry Marsh
Harmony Art Organic Design
Independent Coast Observer
Solid Waste of Willits
Thanksgiving Coffee
Westamerica Bank



Friends

Art & Penny Dreyer
Axel & Inge Karlshoej
Barry & Kathryn Weiss
Bob & Edith Holmes
Brennie & Larry Brackett
Bruce & Marjie Johnson
Bryant & Diane Hichwa
David & Jeanne Black
Dean Schuler & Rich Keuhn
Delores Bertram
Dorothy Bell
Elaine Jacob & Jean Brown
George & Kathi Anderson

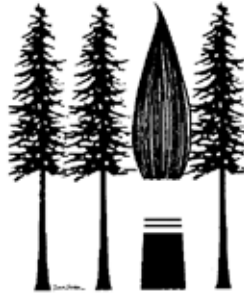
Harriet Wright
Jackson Reed
James & CeCe Werson
John & Jana Jerman
Joyce & Don Omer
Karel Metcalf & Jim Littlejohn
Kay Martin
Linda & Morgan Lambert
Linda Frye & Doug Patterson
Martha & Norman Wohlken
Michele & George Marshall
Mike & Peggy Mee
Molly Buckley & Don Kurtz

Peter & Mary Kay Sidell
Polly Dakin
Richard & Judy Pfeifer
Richard & Kathleen Gary
Robin Ashford
Russ & Judy Hardy
Ruth Short
Sandy Scott
Sharon Nickodem
Sus & Harmony Susalla
William & Mary Retzer

So many wonderful people volunteered their time and effort to make Art in the Redwoods happen, that it is impossible to list them all in Sketches. We thank each and every one of you and publicly thank you by name on the Gualala Arts website: GualalaArts.org

Art Angels

During difficult economic times "Art Angels" are particularly appreciated, and Gualala Arts has several who have generously come forth to sponsor projects close to their hearts. Being a sponsor means easing the constant burden of finding monies to offset deficits and helping to reduce the number of fundraisers that tax volunteers and the community. Sponsors ensure that our ticket prices (which do not offset even 50% of their expenses) are affordable,



allowing more people to enjoy the wide range of programming Gualala Arts offers our coastal community. There are hundreds of publicized events and close to 2,000 calendared items. Thus, there are ample opportunities for additional angels to come forth and assist by sponsoring a favorite activity and/or event. By targeting a particular cause or remembering a special person, sponsors can promote a special interest they may cherish. Recent sponsorships have included:

- Alan and Janet Coleman, after whom the Coleman Auditorium is named, have committed to sponsoring artist Heidi Endemann's upcoming exhibit "Painting is Not Dead" that runs from September 11 to October 3.
- Russ and Judy Hardy have made a three-year commitment to assist with the costs of The May Show, an annual juried fine arts exhibit.
- The Lions Club continues to administer memorial scholarships in the name of Christine Owings to defray some costs for deserving children at the July summer camp.
- RC and Tina Vasavada made a very generous unrestricted gift in return for the naming right to one classical concert per year for the next ten years. The first annual sponsored concert is scheduled on October 10, 2010 featuring Rebecca Rust and Friedrich Edelman, the opening concert of the Gualala Arts Chamber Music Series.
- Bob Rutemoeller and Mary Sue Ittner made a substantial contribution to the operations fund in the name of Gualala Arts' hard working volunteers and dedicated staff and are also sponsoring Art in the Redwoods.

Without these very kind patrons it would have been a very difficult spring to keep our doors open.

Those underwriting expenses can have their name attached as sponsor or may use the naming rights as a memorial. For example, the Coleman's children honored their grandparents donating the funds to create the Frances and Bill Saville Memorial Kitchen. Of course, art angels can always choose to remain anonymous.

For further information about what is entailed in becoming a sponsor, please contact the Fund Development Committee through the Gualala Arts office at 707-884-1138. The committee chairperson Richard Schimbor or Executive Director David "Sus" Susalla will be happy to discuss the wide variety of events available for sponsorship at costs to fit all budgets.

NEWS FROM THE INTEREST GROUPS

Groups meet at Gualala Arts Center unless indicated. Details are on the website GualalaArts.org/Groups

Dinner at Six

The Dinner at Six crew invites you to a Beach Party on Wednesday, August 25. We will serve hors d'oeuvres and a glass of wine or beer for starters, barbecued Marmalade Salmon Vasavada, a stir-fry of fresh veggies, homemade olive bread with dipping oil, spinach salad and a special seaside sand cookie with sorbet for dessert. For a vegetarian alternative, we'll be serving Penne with Mushrooms. Remember to bring your favorite wine or other beverage to enjoy with dinner and dress casually in your cool weather beach attire. Aloha shirts are encouraged.

For reservations, call Barbara Smith 884-1943 or cher1053@yahoo.com with your choice of fish or vegetarian. To have an accurate count for food, the reservation deadline is Tuesday, August 17th. Dinner is \$25.00 per person with all proceeds supporting the Gualala Arts kitchen. Plan to join us for Dinner at Six on Wednesday, August 25, 6:00 p.m. at the Gualala Arts.



Articles for October's Sketches are due Friday, August 30, 2010.

Gualala Arts Book Club

Wednesday, September 8, 10 a.m. rsvp
Carol McQuarrie 785-2198
Thursday, September 16, 1:30 p.m.
rsvp Patty Friedman 785-2838
The selection for September: *"Elegance of the Hedgehog"* by Muriel Barbery & Alison Anderson

Readers Theater

Tuesday September 7, 7:00 p.m.
"Banana Skies"
by local author Jane Reichhold
Listeners are always welcome.
Morgan Lambert 785-1733

Open Clay Studio

The clay studio offers a drop-in Open Studio facility for local artists and visitors, where they can learn how to make and decorate hand-built pottery items.

The Studio is open
Monday - Friday,
10:00 a.m. - 4:00 p.m.

There is an instructor on site during all open studio hours

Help Wanted!

A fresh crew of people are needed to help tidy the grounds and put tents away at the end of Art in the Redwoods on Sunday, August 22, 3:30 - 6 p.m. Many helping hands will mean no one will have to come back Monday morning!

You won't be alone! Several people will have been there all day (all weekend probably!) as well the fresh crew. Please contact the office at 884-1138 if you are willing to lend a hand.

We hope to have food and drink booths open until 4:00 p.m., then we can start the mass break down/clean. By 6:00 p.m.....it will look as if Art in the Redwoods never happened!

BOARD OF DIRECTORS

Michele Marshall, President
Helen Klembeck, Vice President
Martha Wohlken, Secretary
Don Krieger, Treasurer

David 'Sus' Susalla, Executive Director

Board Members: Phil Atkins, David Bower, Betsi Carey, Steve Carnes, Barbara Duns Moor, Russell Hardy, Nancy Kyle, Mike Mee, Gerda Randolph, Bill Retzer, Susan Sandoval, Rich Schimbor

Promoting public interest and participation in the arts since 1961.

SKETCHES

Editor: Gualala Arts Staff
Art Director: P.T. Nunn
Workshop Catalog: Barbara Pratt
Copy Editor: Dave Jordan
Mailing Staff: Bev Sloane, Suzanne Hansen, Joyce Omer, Don Omer, Sharon Jones, Ginger Alexander, Bobbie Penney, Diane Cunningham, Marilyn Balch, Trudy Armer, Linda Frye, Helen Klembeck, Sharon Nickodem, Sonja Thiene, and Colleen Jackman



Sketches is printed on 100% recycled paper out of concern for the planet. Taking care of trees is a part of our job.

Copyright © 2010 Gualala Arts, Inc.



RUPA & THE APRIL FISHES

Saturday, October 23, 2010

6:30 p.m. Doors open, 7:30 p.m. Performance

With their enchanting mix of chic French chanson, Argentinean tango, Gypsy swing, American folk, Latin cumbias, and even dreamy Indian ragas, this trendsetting band is spearheading a multicultural movement that is redefining the sound of contemporary music.

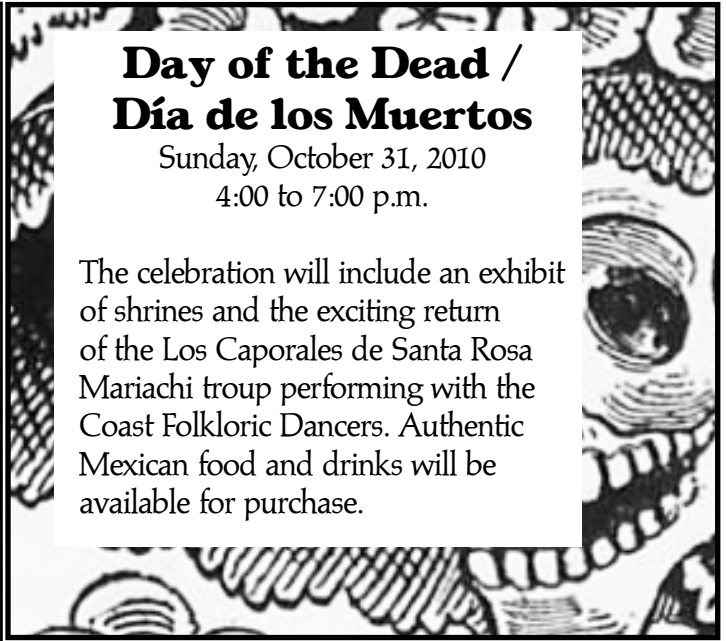


Day of the Dead / Día de los Muertos

Sunday, October 31, 2010

4:00 to 7:00 p.m.

The celebration will include an exhibit of shrines and the exciting return of the Los Caporales de Santa Rosa Mariachi troupe performing with the Coast Folkloric Dancers. Authentic Mexican food and drinks will be available for purchase.



Diwali: Festival of Lights

Friday, November 5, 2010

5:30 p.m. Doors open

6:30 p.m. Dinner

Diwali is an important festival in Hinduism, celebrated with great enthusiasm and happiness in India. The festival is celebrated for five continuous days, where the third day is celebrated as the main Diwali festival or 'Festival of Lights.'

On this auspicious day, people light up diyas and candles all around their house. Diya can be defined as a small earthen lamp that is specially lit on Diwali for puja and decoration purposes. A cotton wick is used in diyas, and oil or ghee serves as the burning fuel. It is basically a symbol of the victory of good over evil, brightness over darkness, and truth over falsity.



CHAMBER MUSIC SERIES

Rebecca Rust, violoncello
Friedrich Edelmann, bassoon
Sunday, October 10, 2010, 4:00 p.m.

Frank Wiens, piano
Sunday, November 14, 2010, 4:00 p.m.

Friday, November 12, 7:30 p.m.
Saturday, November 13, 2:30 p.m.

Dance in the Redwoods



San Francisco
Ballet School
Trainee
Program

CALENDAR OF EVENTS IN SEPTEMBER

Sat-Mon	4-6	Festival	Studio Discovery Tour
Saturday	4-	Exhibit	Opening Reception - Dolphin: Tim Brody & Bruce Jones
Sat-Sun	11-12	Festival	Studio Discovery Tour
Saturday	11-	Exhibit	Opening Reception - Arts Center: Oil Paintings by Heidi Endemann
Sunday	12	Concert	'O Sweet Woods' - Gael Reed and Gary Digman
Monday	13	Lecture	"Bhutan: Kingdom on the Cusp of Change" with Karma Singye Dorji
Monday	27	Lecture	"The Right to Vote" with Charlie Hitt

UPCOMING EVENTS IN OCTOBER

Saturday	2-	Exhibit	Opening Reception - Dolphin: Elizabeth Shepherd & Meris Emory
Monday	4	Lecture	History of the Northern Sonoma Coast
Saturday	9	Fund Raiser	Recycle Sale
Saturday	9-	Exhibit	Opening Reception - Arts Center: The Beauty of the Beast
Sunday	10	Concert	Rebecca Rust & Friedrich Edelmann
Monday	18	Lecture	Harvey Cushing's Holiday Revisited
Saturday	23	Concert	Rupa & the April Fishes
Sunday	31	Festival	Day of the Dead

Gualala Arts Center is open 9:00 a.m. - 4:00 p.m. weekdays, 12:00 noon - 4:00 p.m. weekends



46501 Gualala Road
P.O. Box 244
Gualala, Ca 95445

707.884.1138
info@GualalaArts.org
www.GualalaArts.org

U.S. Post Paid
Nonprofit Org.
Permit #1
Gualala, CA
95445