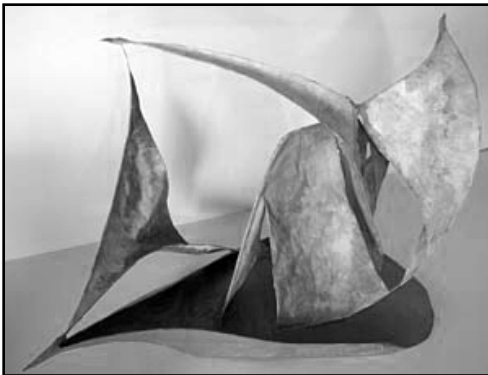


# DOLPHIN GALLERY

## CONSTRUCTIONS BY BRUCE JONES PASTELS BY TIM BRODY

OPENING RECEPTION: SATURDAY, SEPTEMBER 4, 2010, 5:00 P.M.  
EXHIBIT REMAINS THROUGH SEPTEMBER 29

The Dolphin Gallery is pleased to show constructions by Bruce Jones and pastels by Tim Brody from the opening Saturday, September 4 from 5:00 to 7:00 p.m. through September 29, 2010.



### ABOUT BRUCE JONES

I have been making paper mache constructions of all kinds for decades and carving

stone since 2004. I love the way working in three dimensions completely involves my mind. I can't think about anything else when I'm doing it and it takes a while think and act like human after I'm done.

Questions like "How do you decide what to do?" and "How do you know when you're done?" are easy to answer: I'm trying to find shapes that satisfy me. I love it when you can't keep your eyes and hands off a piece of sculpture - when you have never seen a shape like it before.

### ABOUT TIM BRODY

I paint both in the studio and on location. Photorealism is not my goal; the particulars of a scene convey its unique qualities and essence. An abstract shape, an energy or tonality suggests an "idea." I hold

that "idea" in my mind's eye, allowing the painting to take on a life of its own.

For me, the natural world conveys immensity, power, impermanence and reconnection with our true spiritual

nature, which is primordial wakefulness, clarity and spaciousness. The fine art of being present to this nature is the guiding principle in my art. I paint to express appreciation for the precious opportunity to be present

in a human body on this wonderful life-sustaining planet. I hope these paintings convey this state of mind or presence

and offer a sense of peace, stillness and equanimity.

Pastel is pure dry pigment with binder to form sticks that range from hard to soft. It is the same pigment used in fine art paints (oil and watercolor), and is the most permanent of all media. I love pastel for the amazing and unique qualities of luminosity that can be achieved by applying multiple layers of pigment (consisting of very fine crystals) onto lightly sanded paper, which gives it the ability to blend optically in the viewer's eye in beautiful and surprising ways. It allows me to express my vision in a primal and direct manner like the ancient cave painters of Lascaux, transmitting the human spirit through touch using charcoal and pure pigments from the earth in an unbroken lineage from their time to ours.



to  
a

