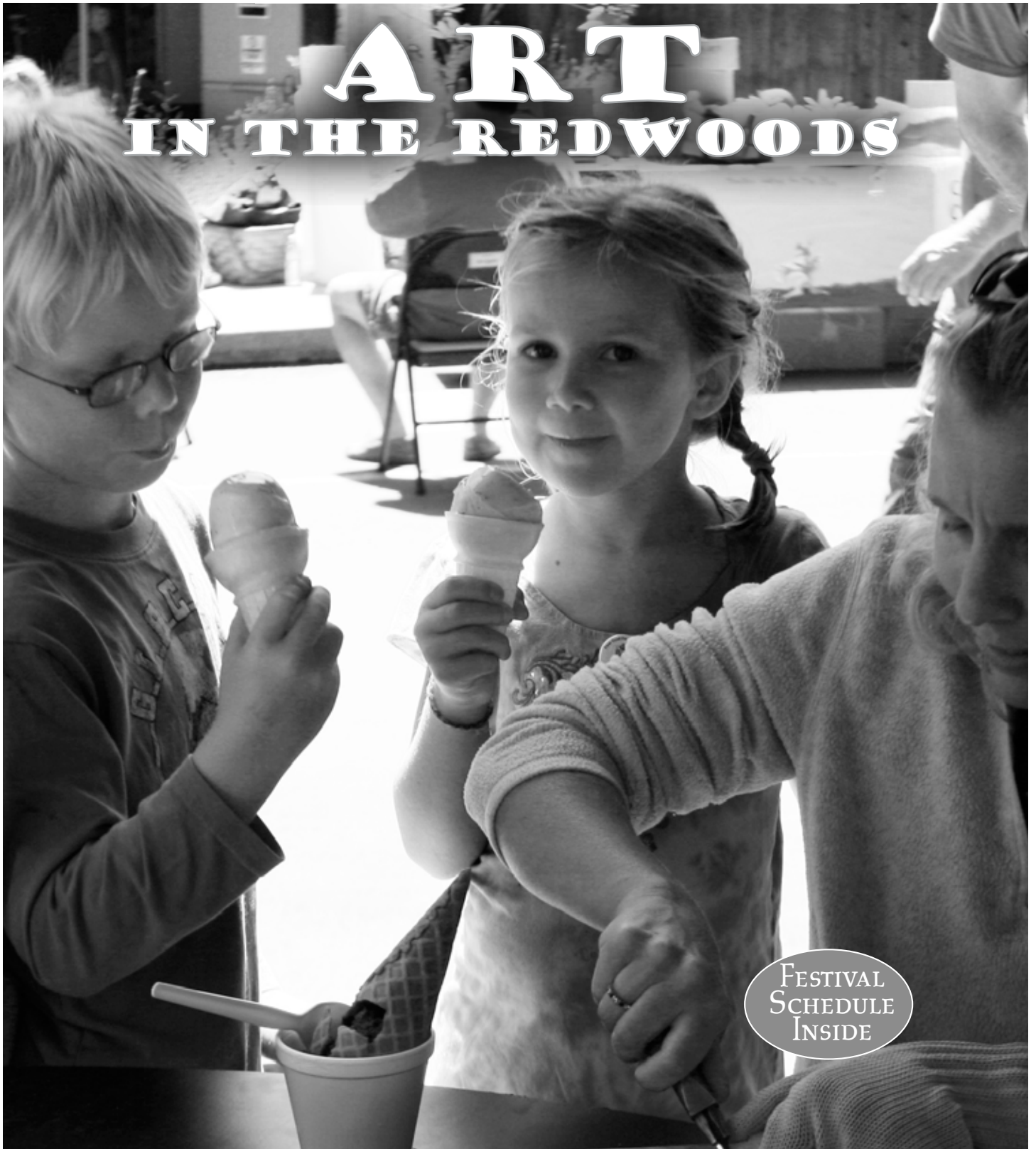


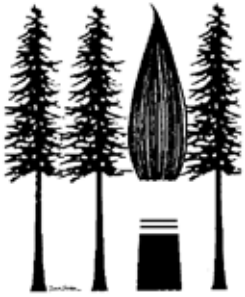


AUGUST 2010  
**SKETCHES**

**ART**  
**IN THE REDWOODS**



FESTIVAL  
SCHEDULE  
INSIDE



# ART IN THE REDWOODS 2010

## Fine Arts Exhibit

The heart of the festival is the magnificent exhibit of fine art throughout the building, including oil paintings, acrylics, watercolors, pastels, drawings, photographs, sculpture, woodworking, stained and fused glass, jewelry and fiber arts - most of them for sale.

Admission \$6; children 17 and under are free.

For those unable to attend the festival, these works will remain on display through Sunday, September 5. The Gualala Arts Center is open weekdays from 9:00 a.m. to 4:00 p.m. and on weekends from 12:00 noon to 4:00 p.m. Admission is free



Live music will be presented on the auditorium stage, in the outdoor amphitheater and by strolling musicians throughout the festival weekend - most of it performed by local musicians.

The grounds will be filled to the brim with vendor booths offering a host of items including jewelry, ceramics, wood, tiles, weavings, specialized apparel, leather goods, photographs, textiles and artwork.

Food and drink will be available. Gualala Arts Culinary Group offers a great grill, salads and soups. Beer and Wine are available for purchase. Your sweet tooth will have lots of choices between home-made cakes and cookies and a great ice cream bar.

## PREVIEWS BEFORE THE FESTIVAL:

### "Top Hat" Dinner

The "Top Hat" opening dinner & wine celebration at the Gualala Arts Center starts at 6:00 p.m. on Thursday evening. Diners will get a sneak peek preview of the Fine Arts Exhibit even before it is judged.

Only 100 tickets, which include a VIP Festival pass, are available for this evening of evenings. Reservations for dinner (\$150, includes \$100 donation) are recommended as it usually sells out by August 1.

### Champagne Preview

The Champagne Preview is on Friday evening from 4:00 p.m. to 7:00 p.m. (admission \$10).

Outdoor artist booths will be open for a sneak preview from 4:00 - 6:00 p.m. The Fine Arts Exhibit sneak preview is from 4:30 - 7:00 p.m. Award presentations and judges critique will take place Friday at 6:00 p.m. in the outdoor amphitheater. Artists need not be present to accept awards, but will miss the applause and kudos if they are absent.

THE FESTIVAL IS OPEN TO THE PUBLIC ON  
SATURDAY, AUGUST 21 FROM 10:00 A.M. TO 5:00 P.M. AND  
SUNDAY, AUGUST 22 10:00 A.M. TO 4:00 P.M.

ADMISSION IS \$6.00 FOR ADULTS.

CHILDREN 17 AND UNDER ARE FREE.

## FESTIVAL SCHEDULE

### Thursday, August 19

6:00 p.m. Top Hat Dinner

### Friday, August 20

4:00 p.m. Champagne Preview of  
the Fine Arts Exhibit

6:00 p.m. Judges Critique & Awards

### Saturday, August 21

10:00 a.m. Festival gates open

11:00 a.m. White Hackle Pipe Band

11:00 a.m. Tonewoods

12:00 p.m. Storytelling for Children

1:00 p.m. Ernest Bloch Bell Ringers

3:00 p.m. White Hackle Pipe Band

5:00 p.m. Festival gates close

### Sunday, August 22

10:00 a.m. Festival gates open

11:30 a.m. Tonewoods

11:45 a.m. Howard & Jones Dance

12:00 p.m. Howard & Jones Dance

12:00 p.m. John Micka

12:00 p.m. Storytelling for Children

1:00 p.m. Ernest Bloch Bell Ringers

2:00 p.m. Ba Da Boom

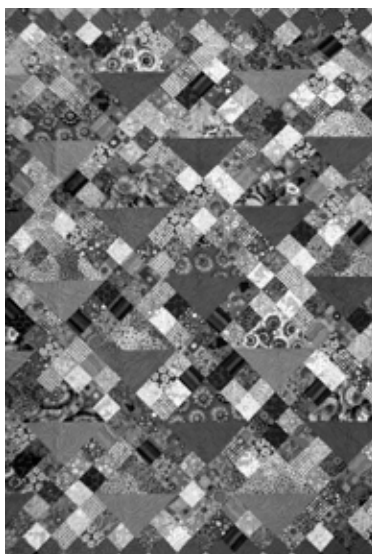
3:00 p.m. People's Choice Award

3:00 p.m. Quilt Raffle Drawing

4:00 p.m. Festival gates close

### through Sunday, September 5

- Fine Arts Exhibit - free after August 22



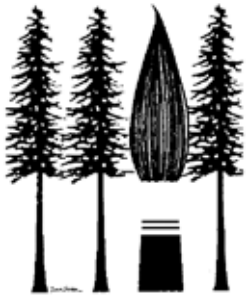
Win  
the 2010  
Art In The Redwoods  
Quilt

"POCKET  
FULL  
OF  
POSIES"

The Art in the Redwoods Quilt Raffle will be held on Sunday at 3:00 p.m. Winner need not be present to win. Proceeds will go Gualala Arts for art scholarships.

Raffle tickets can be purchased at Gualala Arts Center and the Dolphin Gallery. Tickets are \$2 each, three for \$5, seven for \$10 or fifteen for \$20.

For more details, see [GualalaArts.org](http://GualalaArts.org)



# ART IN THE REDWOODS

## PERFORMERS

### **White Hackle Pipe Band**

Saturday, August 21, 2010 at 11:00 a.m.  
Saturday, August 21, 2010 at 3:00 p.m.

White Hackle Pipe Band are bagpipers and drummers in authentic Scottish attire. This Sacramento group is famed for their enthusiastic performance of folk music and marches.

<http://whitehackle.home.comcast.net/~whitehackle/>



### **Tonewoods**

Saturday, August 21, 2010 from 11:00 a.m. - 3:00 p.m.  
Sunday, August 22, 2010 from 11:30 a.m. - 2:30 p.m.

A delightful Sonoma County-based trio with Steve Gomes - vocal, guitar and mandolin, Jenny Norse - vocal, mandolin, accordion, percussion (including the infamous "Woody") and Patrick Mullin - vocal, guitar and Irish bouzouki.

The Tonewoods perform contemporary acoustic Americana music. Their unique arrangements feature strong vocal harmonies rendering tunes from some of the best songwriters of our time. They appeared at the Fine Arts Fair last May and we are thrilled to have them back.

### **Ling-Yen Jones and Tessa Howard**

Sunday, August 22, 2010 at 11:45 a.m. & 12:00 noon

Presenting the incredible duo Ling-Yen Jones and Tessa Howard - the two that won't stop dancing while music is playing.

Ling-Yen and Tessa will be performing in the Coleman Auditorium during the Arts in the Redwoods Festival. Come and enjoy the energy of the dance.



### **Four-Eyed Frog Books**

Storytelling for Children

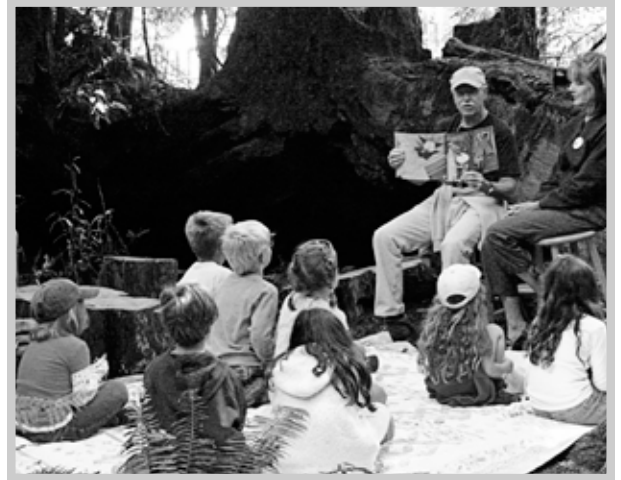
Saturday, August 21, 2010 at 12:00 noon

Sunday, August 22, 2010 at 12:00 noon

Once again, Joel & Linda Crockett from Four-Eyed Frog Books will share stories with youngsters of all ages in the enchanting Fairy Circle at the Gualala Arts Center. Don't miss this opportunity to create a great memory with the young ones in your life.

For more information, visit

<http://www.foureyedfrog.com>.



### **Ernest Bloch Bell Ringers**

Saturday, August 21, 2010 at 1:00 p.m.

Sunday, August 22, 2010 at 1:00 p.m.

The Ernest Bloch Bell Ringers are a local group that always delights in playing a wide range of music. Ernest Bloch Bell Ringers: Davina Allen, Elise Allen, Lucienne Allen, Tina Ballagh, Linda Bostwick, Liz Elstun, Sue Hansen, Jeanne Jackson, Irene Leidner, Sita Milchev, Claire Skilton, Joanne Solberg, Gail Thompson



### **Ba Da Boom**

Sunday, August 22, 2010 from 2:00 - 3:00 p.m.

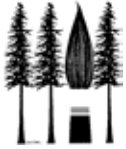
Local drum band 'Ba Da Boom' are shown performing at last summer's Art in the Redwoods Festival. Ba Da Boom is: Andrew Purcell, Brian Thurmand, Jeremy Ruley, Mark Pearce, Leon Schneiderman, Ian Stinson, Matt Calahan and James Hayes.

### **John Micka**

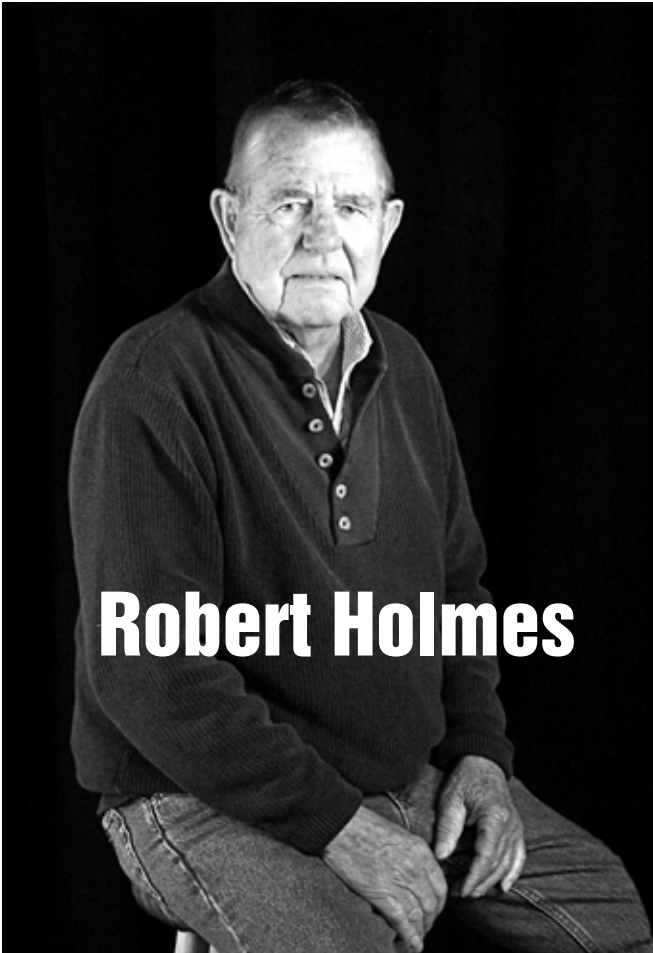
Sunday, August 22, 2010 at 12:00 noon

John Micka, a 30-year resident of our area, is self taught on the classical guitar. It has been a personal teaching journey of 20 years, and he has even started making guitars. He says that if he had known how difficult the journey was, he might not have taken it on. It has been rewarding.





## Art in the Redwoods Top Hat Dinner 2010



# Robert Holmes

### HONORING ROBERT HOLMES

In partnership with his wife, Edith, Robert Holmes has built a career as a sculptor with an international reputation and has visions of helping build an equally well-known sculpture garden at the Gualala Arts Center. His recognized talent and longtime association with Gualala Arts makes him a fitting honoree at the year's Art in the Redwoods Top Hat dinner on Thursday, August 19.

After graduating from college he worked in the San Francisco area and then returned to his hometown of Phoenix becoming involved as the general contractor in numerous construction projects for over twenty years, but he always kept sculpting in concrete,



fabricated metals, and wood.

In 1978 the Feingarten Gallery, the gallery that brought Rodin to the United States, accepted him provided he would work in bronze, the medium for which he is now best known. His life changed dramatically in 1980 when he decided to devote his life fulltime to his art. In 1981 he

and Edith moved to The Sea Ranch where they found the perfect studio-home to rent for \$ 500.00 a month.

Holmes quickly points out that Edith, born on Long Island, has played an important role in promoting his work. She handles the marketing and business matters freeing him to explore his ideas.

The neighbor next door to the Holmes rental was a Gualala Arts Board member who talked Holmes into entering his first Art in the Redwoods show. His photograph won first prize, but he did not feel comfortable winning because he thought the show should nurture local talent over professionals.

His current passion is to create a sculpture garden at Gualala Arts similar to those he has seen elsewhere. The concept is to integrate the juried pieces of sculpture with the landscape. The garden becomes an outdoor gallery where the pieces



## Make a Difference!

Contribute to Gualala Arts' financial well being and secure long term recognition for your donations. Contact the Fund Development Committee for further information.  
Phone (707) 884-1138.



Robert and Edith Holmes

are displayed. Any artist who sells one may replace it with another. Gualala Arts gains a 25% commission and the community has an attraction that could draw visitors. Holmes's "Mr. Geom," the garden's first piece, stands overlooking the DePrima terrace.

Cazadero sculptor Bruce Johnson, who is slated to

introduce the Holmes at Top Hat, has many connections to well-known sculptors and is enthusiastic about the project. There are currently 10 or 11 suitable spaces to accompany the four Holmes sculptures already at the Gualala Arts Center - "Mr. Geom," "Strolling Man," "Kneeling Woman," and "I Am: Standing Pair."

Now in their eighties Robert and Edith Holmes continue to create and to be actively involved in Gualala Arts. In 2003 he received a lifetime achievement award, the Premio del Città di Firenze in Florence and the Lorenzo il Magnifico medal. This year he will also be honored in Gualala, his home since 1981.



## WIN A ROBERT HOLMES ORIGINAL!

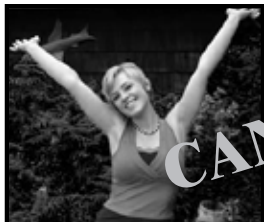
### ■ ■ ■ Top Hat Dinner ■ ■ ■

THURSDAY, AUGUST 19  
6:00 P.M.

### HONORING ROBERT HOLMES

Fine food and wine.  
Get a sneak peek at the Fine Art Exhibit before it's judged!

\$150 (incl. \$100 donation) comes with  
VIP Festival pass and a chance to own "Arabesque," a table  
top Robert Holmes, original sculpture retailed \$3400.



## Keelyn and Friends

The concert "Keelyn and Friends" on Saturday, August 7, 2010  
has been CANCELLED. Contact the Gualala Arts Office for more details.



Art Center Theater is proud to present their July production of Thornton Wilder's famous play, *Our Town*. With roles for twenty performers, this mainstay of American Theater almost requires a small town to stage it!

Prepare yourself for a magical evening as this talented troupe of players touch your heart!. Performances are on July 24, 25, 30, 31 and August 1. Friday and Saturday performance time is 7:30 p.m. and Sunday is at 2:30 p.m. Tickets are \$15 for adults and \$10 for youth (17 and under); \$5 additional if purchased the day of the performance.

Coleman Auditorium

Gualala Arts Center

**Fri, July 23, 7:30 p.m. Gala Opening**

Sat, July 24, 7:30 p.m.

Sun, July 25, 2:30 p.m. matinée

Fri, July 30, 7:30 p.m.

Sat, July 31, 7:30 p.m.

Sun, Aug. 1, 2:30 p.m. matinée

For advance ticket purchase, go to **GualalaArts.org/tickets** or phone Brown Paper Tickets at 800-838-3006.

To purchase tickets in person, visit the Gualala Arts Center or Dolphin Gallery in Gualala.



# Studio Discovery Tour

Enjoy your tour to the fullest.

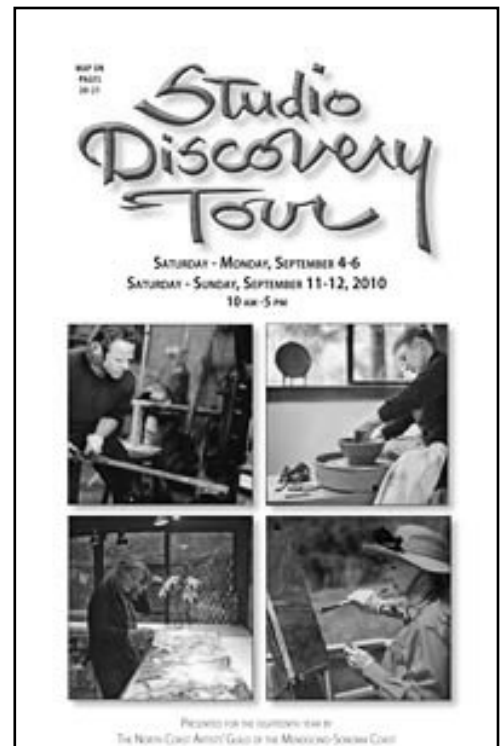
Get your free full-color catalog today!

Preview at the Artist's Collective in Elk and Sea Ranch Lodge Front Gallery August and September

Studio Discovery Tour September 4-6 and 11-12

Get a preview of the North Coast Artists' Guild Studio Discovery Tour by stopping at the Artist's Collective in Elk and Sea Ranch Lodge Front Gallery. The exhibit will be on display during the months of August and September. Catalogs are available at The Gualala Arts Center, The Dolphin Gallery and many local businesses.

More info at **GualalaArts.org**





# SYNERGY: WALL AND WEARABLE ART JEANNE AND STEVE GADOL

OPENING RECEPTION: SATURDAY, AUGUST 7, 2010, 5:00 P.M.  
EXHIBIT REMAINS THROUGH SEPTEMBER 1



Synergy occurs when the working together of two or more things produces an effect greater than the sum of their individual effects. This show is about synergy on multiple levels in Jeanne and Steve Gadol's new works.

The pieces in the show make use of photographic imagery with papers, metals, backings, coatings, fabrics and acrylic paints. The result is a synergistic effect of techniques

and mediums resulting in unique and creative works in which the photographic element can range from being easily visible to quite obscured.

This show also illustrates synergy between two artists. Although their styles and techniques are quite different, Jeanne and Steve learn from and are inspired by each other such that their work evolves and changes from each other's visions and feedback.



Jeanne is combining her photographs with her acrylic paintings in a variety of ways on both paper (wall art) and silk (wearable art).

Steve has developed processes for using metallic plates and foils behind the photograph to add depth and life to the image. He has transformed photos captured with his color infrared camera into dramatic and colorful surrealistic prints.

GUALALA ARTS GARDEN GUILD PRESENTS  
SATURDAY, JULY 31, 2010  
10 A.M.-3 P.M.

# A Ladies & Gents Garden Luncheon

Luncheon will be served at noon in Sandy Scott's Frog Song Gardens summer pavilion overlooking the lake. Flower arranging demonstrations by Marcia Heckman to follow. Best of Show Chapeau award. Raffle. Self guided tour of gardens follows lunch.

**\$33 per ticket** Check with Gualala Arts for a special ticket for tables of 8 for \$200.

**Raffle Prizes:** *Must be present at luncheon to participate.*

Frog Song private retreat for one night: living room and bedroom plus private tour of the gardens  
Gardener's Beauty Basket  
Succulent Topiary Tree  
Garden Basket of Herbs and Tool Tote Bag from Sea Ranch Bldg. Supply  
Garden Maiden Sculpture in Basket with succulents  
Marsha Heckman Arrangement #1  
Marsha Heckman Arrangement #2  
Flower Gift Certificate by Natasha  
Sunset Garden Book  
Gift Certificate from Gualala Hotel

## WATERING CREW

We need a hand irrigation crew this summer. It will involve one day a month – if we get 10+ volunteers. Call Art Dreyer at 707-785-3580 for more info.



Articles for September's Sketches are due Friday, July 30, 2010.

## BOARD OF DIRECTORS

**Michele Marshall**, President  
**Helen Klembeck**, Vice President  
**Martha Wohlken**, Secretary  
**Don Krieger**, Treasurer

**David 'Sus' Susalla**, Executive Director

**Board Members:** Phil Atkins, David Bower, Betsi Carey, Steve Carnes, Barbara Duns Moor, Russell Hardy, Nancy Kyle, Mike Mee, Gerda Randolph, Bill Retzer, Susan Sandoval, Rich Schimbor

Promoting public interest and participation in the arts since 1961.



## SKETCHES

**Editor:** Gualala Arts Staff

**Art Director:** P.T. Nunn

**Workshop Catalog:** Barbara Pratt

**Copy Editor:** Dave Jordan

**Mailing Staff:** Bev Sloane, Suzanne

Hansen, Joyce Omer, Don Omer, Sharon

Jones, Ginger Alexander, Bobbie Penney,

Diane Cunningham, Marilyn Balch, Trudy

Armer, Linda Frye, Helen Klembeck, Sharon

Nickodem, Sonja Thiene, and Colleen

Jackman



Sketches is printed on 100% recycled paper out of concern for the planet. Taking care of trees is a part of our job.

Copyright © 2010 Gualala Arts, Inc.

# Interest Groups

Groups meet at Gualala Arts Center unless indicated.  
Details are on the website [GualalaArts.org/Groups](http://GualalaArts.org/Groups) or contact the people listed.

## **Basket Makers**

2nd Thursdays, 10:00 a.m. - 1:00 p.m.  
Gerda Randolph, 785-2206

## **Beads n' Beyond**

3rd Saturday, 1:00 p.m. - 3:00 p.m.  
Suzanne Hansen, 785-9302

## **Chamber Music Series Committee**

1st Wednesday at 1:00 p.m.  
Steve Chell, 785-2549

## **Coastal Singers**

Days and Times to be announced.  
Steve McLaughlin, 884-3722

## **Collage**

2nd and 3rd Monday of the month  
1:00 p.m. - 4:00 p.m. upstairs  
Contact: Sharon Nickodem  
sharonnickodem@aol.com

## **Culinary Arts Guild**

Ben Klagenberg, 785-3530

## **Dinner At Six Fundraiser for Gualala Arts Kitchen**

Wednesday, August 25  
Ben Klagenberg, 785-3530

## **Fiber Arts Group**

1st Thursdays, 10:00 a.m. - noon  
Jennie Henderson, 882-2270

## **Gualala Arts Book Club**

Wednesday, August 11, 10 a.m.  
rsvp Alice Combs 884-3741

Thursday, August 19, 1:30 pm  
rsvp Alice Combs 884-3741

The selection for August:  
"Green Mansions" by  
William Henry Hudson.

## **Gualala Arts Library** in the

Mohr Mezzanine  
Sharon Nickodem, 884-9611

## **Kitchen Cabinet**

Manages the Gualala Arts Center  
kitchen; group needs volunteers.  
Wilma Klagenberg, 785-3530

## **Landscape Group**

Tuesdays, 9:00 p.m. - noon  
Art Dreyer, 785-3580

## **Life Drawing**

Wednesdays, 2:30 pm - 5:30 p.m.  
Upstairs. Model's fee shared by attendees  
(usually \$8 to \$10). Models needed, \$20  
per Hour. Mike Mee at 785-3999

## **North Coast Artists' Guild**

(NCAG) Walt Rush, 882-2441  
info@northcoastartistsguild.com

## **North Coast Photographers**

**Group** (NCPG) Wildlife photography:  
1st Sundays, 1:00 p.m.  
Craig Tooley, theruffians1@mac.com

## **Pacific Piecemakers Quilt Guild**

3rd Friday monthly at 12:30 p.m.  
Joyce Gaudet 884-1544

## **Piano Group**

2nd Monday of every month at 1:00 p.m.  
Adelle Platt at 785-9506.

## **Poetry and Short Prose**

Meets monthly  
Frank Healy, 884-3728

## **Readers Theater**

Tuesday August 3, 7:00 p.m.  
"Crumbs from the Table of Joy"  
by Lynn Nottage  
Listeners are always welcome.  
Saundra Brewer 785-9333

## **Talking About Art**

7:00 p.m. Thursday, August 26  
Contact Larry Riddle 882-2774 or  
lriddle@ucsd.edu

## **The Woodcarving Group**

2nd Thursday of the month  
Thursdays, 2:00 p.m. - 4:00 p.m.  
Woodworkers contact  
Jim Tackett, 785-1024

## **Talking About Art**

### **WHO ARE THE "REAL" ARTISTS?**

**7:00 p.m. Thursday, August 26  
Gualala Arts Conference Room**

The topic for the August discussion at Talking About Art will be "Who are the real artists?" Specifically, just what does a real artist look like? Who makes the decision? Is there a certification process? What media qualifies as real art? Certainly painting, drawing and sculpture, but what about furniture design, quilt making, and dance (and many, many others)?

"Talking About Art" is for both academically trained and self-trained artists who enjoy discussing art. And it is also for non-artists who want to learn more about art in all its forms. We encourage everyone to attend who wants to talk about art and also those who just want to listen. There is no fee for this series, but donations to Gualala Arts are always welcome.

-- Larry Riddle

## **Open Clay Studio**

The clay studio offers a drop-in Open Studio facility for local artists and visitors, where they can learn how to make and decorate hand-built pottery items.

The Studio is open  
Monday - Friday,  
10:00 a.m. - 4:00 p.m.

There is an instructor on site during all open studio hours.



indicates updated info

## CALENDAR OF EVENTS IN AUGUST

Sunday	1-31	Exhibit	Sea Ranch Lodge Front Gallery: Studio Discovery Tour Preview
Saturday	7-	Exhibit	Opening Reception - Dolphin: Jeanne and Steve Gadol
Saturday	7	Concert	Local Eyes: Keelyn and Friends: CANCELLED
Monday	9-20	Closed	Gualala Arts Center closed for Art In The Redwoods preparations
Thursday	19	Dinner	Art in the Redwoods: Top Hat Dinner
Friday	20	Preview	Art in the Redwoods: Champagne Preview and Awards Ceremony
Sat-Sun	21-22	Festival	Art in the Redwoods: 49th Annual Festival
Monday	23-	Exhibit	Art in the Redwoods Fine Art Exhibit, through September 5

## UPCOMING EVENTS IN SEPTEMBER

Sat-Mon	4-6	Festival	Studio Discovery Tour
Saturday	4-	Exhibit	Opening Reception - Dolphin: Tim Brody & Bruce Jones
Sat-Sun	11-12	Festival	Studio Discovery Tour
Saturday	11-	Exhibit	Opening Reception - Arts Center: Recent work by Heidi Endemann
Monday	27	Lecture	"The Right to Vote" with Charlie Hitt

Gualala Arts Center is open 9:00 a.m. - 4:00 p.m. weekdays, 12:00 noon - 4:00 p.m. weekends



46501 Gualala Road  
P.O. Box 244  
Gualala, Ca 95445

707.884.1138  
info@GualalaArts.org  
www.GualalaArts.org

U.S. Post Paid  
Nonprofit Org.  
Permit #1  
Gualala, CA  
95445