



JUNE 2010

# SKETCHES

COMPOSER  
**TERRY  
RILEY**

**One of the "1000 Makers of the  
20th Century."** - *London Sunday Times*



# TERRY RILEY

# GYAN RILEY

SATURDAY, JUNE 26, 2010  
7:30 P.M.

World famous composer and pianist Terry Riley celebrates his 75th birthday with a concert at Gualala Arts Center accompanied by Gyan Riley on acoustic guitar.

Terry visited the Gualala Arts Center in August, 2009, for the world premiere of his composition, "The Welcoming Baptism of Sweet Daisy Grace," performed by Kronos Quartet as part of the Art in the Redwoods Festival.

**One of the "1000 Makers of the 20th Century."** - *London Sunday Times*

Terry was struck by the beauty of the Sonoma / Mendocino coast, and we were struck by the beauty of his music. We are honored that he agreed to perform at the Gualala Arts Center, together with his son, composer and guitarist Gyan Riley, to celebrate his 75th birthday.

Composer Terry Riley launched what is now known as the Minimalist movement with his revolutionary classic "IN C" in 1964. This seminal work provided a new concept in musical form based on interlocking repetitive patterns. It's impact was to change the course of 20th century music and it's influence has been heard in the works of prominent composers such as Steve Reich, Philip Glass and John Adams and in the music of rock groups such as The Who, The Soft Machine, Tangerine Dream, Curved Air and many others.

Terry's hypnotic, multi-layered, polymetric, brightly orchestrated eastern flavored improvisations and compositions set the stage from 1964 on for the prevailing interest in a new tonality.

For more information, visit their websites:

[www.TerryRiley.net](http://www.TerryRiley.net)  
[www.GyanRiley.com](http://www.GyanRiley.com)

For more details on the concert, see [GualalaArts.org](http://GualalaArts.org).



Gyan Riley is an equally strong presence in the worlds of classical guitar and of contemporary music. While studying as the first full-scholarship guitar student at the San Francisco Conservatory of Music, he received a recording contract for his debut CD of original works, *Food for the Bearded*, released in 2002 on New Albion Records.

He has since expanded his career as a composer and instrumentalist, receiving commissions from

**"Gyan Riley is a first rate concert guitarist."**

- *Steve Reich, composer*

the Carnegie Hall Corporation, the New York Guitar Festival, the Paul Dresher Ensemble, and the Elaine Kaufman Cultural Center. He has performed throughout 10 European countries and across the U.S., both as a soloist and in ensemble with various artists such as Zakir Hussain, Michael Manring, Dawn Upshaw, the San Francisco Symphony, the Falla Guitar Trio, the World Guitar Ensemble, and his father, the composer / pianist / vocalist Terry Riley.

Tickets are \$25 advance, \$5 more day of the concert, if available. You can purchase tickets online or by calling 800-838-3006. To purchase in person, visit the Gualala Arts Center, Dolphin Gallery or Four-Eyed Frog Books.

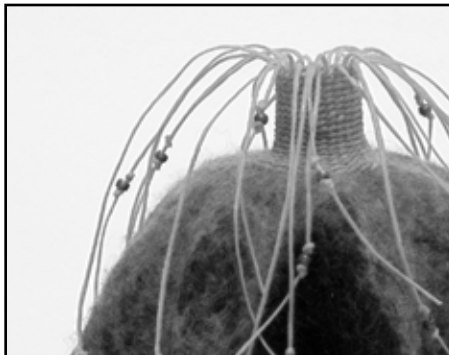
75th  
Birthday  
Bash!

# Bay Area Basket Makers

Opening Reception:  
Saturday, June 12, 2010 at 5:00 p.m.  
Exhibit remains through July 4, 2010  
Gualala Arts Center

Handmade baskets made by the Bay Area Basket Makers (BABM) guild will be on display Saturday, June 12 through Sunday, July 4, 2010 in the Burnett Gallery and Jacob Foyer. These baskets were constructed from a variety of materials, using many different techniques.

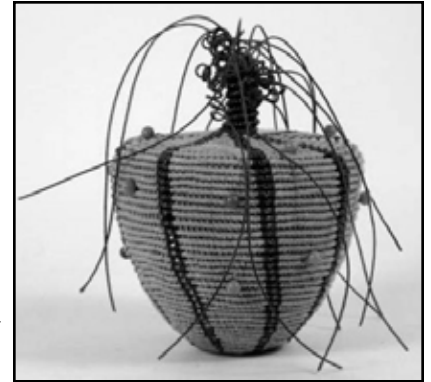
Any material can be woven into a vessel and be experimented with. Many BABM members enjoy specializing in specific techniques using specific materials while some members use traditional techniques such as plaiting and coiling with traditional, natural materials. A number of members use traditional techniques with recycled materials including telephone wire, aluminum can pull tabs, mylar video tape, old road maps, plastic bags, fabric, cable ties. Unusual natural materials include handmade paper, kelp and horsehair. Non-traditional techniques are also showcased.



BABM is a non-profit organization that was founded in 1984 by two basket makers who saw the need for supporting and developing a growing interest in basketry as both a craft and art form. The guild serves as a source of information and inspiration, as well as a means of communication among basket makers.

Currently BABM has over 70 members, more than half of whom are active in guild activities. Most are from the greater Bay Area, but some now live as far away as Colorado and Utah. The members' skills range from beginner to professional, and the group welcomes new members at all levels of expertise. Many baskets are made for fun and as a hobby. Others are made by working artists who exhibit their creations locally, nationally and internationally. Numerous members have won awards for their work. One member even

has a place in the Guinness Book of World Records for the smallest lidded pine needle basket - a creation smaller than a dime! In addition, several members are well-known and well-loved instructors.



In addition to wonderful potluck lunches at their monthly meetings, the BABM highlight a specific technique and/or material, and spend several hours learning it together. Often one of the members will provide the demonstration and instruction, but they also invite experts in the field to instruct in a technique that interests most of the group.

Although BABM does not participate in many group shows, they have enjoyed success at the Danville Art Center, the Castro Valley library, and the Davisville Travel Agency Window Gallery in Davis. BABM is a member of the Conference of Northern California Handweavers (CNCH), having the distinction of being the only basketry guild in the organization. BABM participate and exhibit as a group at the yearly CNCH conferences. The guild has shown their work many times at the Gualala Art Center.



For more information about Bay Area Basket Makers please visit **[babmbaskets.tripod.com](http://babmbaskets.tripod.com)**.

Further details may be obtained by visiting the Gualala Arts Center or online at **[GualalaArts.org](http://GualalaArts.org)**.



# Vasavada Sponsorship

Gualala Arts President Michele Marshall announces a unique sponsorship agreement that once again reminds local residents how life on the Mendonoma Coast is an experience enriched by the community spirit and generosity of some very special people.

R.C. and Tina Vasavada recently concluded an agreement with Gualala Arts under which they have made a significant "unrestricted, tax deductible, cash donation" to help insure Gualala Arts' short and long term survival even in these difficult economic times. In exchange R.C. and Tina will be permitted to "name" annually one classical music concert of their choice for the next ten years.

The Vasavadas are already quite active in our community. R.C. spearheaded the efforts of the local Rotary to promote creative writing by donating the prize money in a very successful annual writing

contest begun in 2003. Among other activities he also served on Gualala Arts and Sea Ranch Finance boards and was GA treasurer. Both he and his son have given talks as part of the Gualala Arts lecture series.



A longtime member of the Redwood Coast Education Foundation, Tina has sung with the Coastal Singers chorus for many years and has performed and sung in Art Center Theater productions.

This donation is the first to be received under a new effort by Gualala Arts to raise funds by allowing donors to create recognition for themselves or others by giving a name to specific events on the annual Gualala Arts calendar or to special one time events which they themselves propose.

The prototype agreement allows the Vasavadas to

**GUALALA ARTS  
FINE ARTS FAIR**



**Memorial Day weekend**

Saturday, May 29, 10:00 a.m. to 5:00 p.m.

Sunday, May 30, 10:00 a.m. to 5:00 p.m.

Gualala Arts Center

support the overall financial condition of Gualala Arts while showing their special interest in classical music performances that help fulfill Gualala Arts' mission. Their hope is that some concerts not only will include music from the standard classical composers but also any classical music that may draw on the music of India.



Both R.C. and Tina have been active at Gualala Arts for many years and have volunteered their time and talents on countless occasions. Now they want to provide financial support that fosters their love of music and perhaps provides an opportunity to share the ancient and rich musical history of R.C.'s homeland. Also, they would like this gesture to be another example of community spirit that might encourage others.

Even the beautiful building that houses the concerts is a testimony to the dedicated volunteers, including the Vasavadas, who made it possible. Similar efforts have created the Coast Community Library, supported RCMS, opened access to coast beaches, built scenic trails, and tackled the task of building a rec center. In this tradition the Gualala Arts board has confidence that R.C. and Tina's example can motivate others.

## Make a Difference!

Others wishing to similarly contribute to Gualala Arts' financial well being and secure long term recognition for their donations are encouraged to contact the Fund Development Committee for further information. Phone (707) 884-1138.

## VOLUNTEER IMPORTANT PERSONS



**AL FORSTER**  
Art & Time  
Elevator Project



**VINCE KREGER**  
of "Set in Stone" (884-1757)  
repaired stone tiles in the Foyer



**SANDY SCOTT**  
Garden Tour for  
"A Ladies Garden Luncheon"

# THANK YOU!



**Helen Klembeck**

On April 13, the volunteers of The Dolphin Gallery held a luncheon at St. Orres to thank Helen Klembeck for her many contributions as manager of The Dolphin. During the lunch, David ("Sus") Susalla awarded Helen a plaque and a carved dolphin sculpture as tokens of our gratitude for her Dolphin services. Helen has created a wonderful environment at the gallery, where artists are welcomed, and the volunteers have been given the opportunity to participate in the growth and evolution of what is now a very successful consignment shop and gallery in mid-town Gualala. Helen has been the driving force behind The Dolphin since 2005, but she was also part of the team, and we will miss her leadership, support and friendship in this role. However, the time has come for Helen to stretch her wings, travel and work on her own art...but we suspect we'll see her now and then around The Dolphin.

As of April, the management of The Dolphin is shared among several volunteers, with Carol Chell providing overall continuity as volunteer Manager.

---

## A Word from Our New Dolphin Manager, Carol Chell

My husband Steve and I moved to Gualala in 2006. We immediately joined Gualala Arts and both signed on as volunteers at the Dolphin Gallery. It has been a great way to meet people while contributing our efforts to support Gualala Arts at the same time. We are both artists as well and our work is on display at the Dolphin. I was an Art / Interior Design major at San Jose State. Initially an interior designer, I spent the last 11 years before moving to Gualala in sales and marketing for the Terraces of Los Gatos, a luxury continuing care retirement community.

While raising our two daughters and working, I found little time to paint but knew that I would eventually get back to it. My Dad had a bluff top vacation home in Anchor Bay during the years the girls were growing up. We loved spending time on the coast, so when we were renting for a few days

at Sea Ranch we saw a home we couldn't resist and seized the opportunity. I took up watercolor again and love the time spent painting.

When asked to replace Helen Klembeck as the manager of the Dolphin, I was a little overwhelmed as she has done a wonderful job creating a truly special gallery featuring our local artists. I now am enjoying arranging the art, meeting artists, and getting to know the other volunteers who work there. They have been invaluable, always offering to help in any way they can. Harriet Wright has taken on the most difficult part of all in keeping an accurate inventory of all that we have. We are already receiving many compliments and hope everyone will visit often to check out our collection of beautiful pieces of art. We offer a wide range and hope to add new artists and their work. The Dolphin is unique in that it focuses on the incredible creative talents of artists in this area.

-- Carol Chell

---

**ART (AND MORE!) OFF THE WALL**

**Saturday, May 29 at 5:30 p.m.**

The preview starts May 22! An on-line catalog of featured items is on **GualalaArts.org**

## KAZUKO MATTHEWS, CERAMICS SCOTT CHIEFFO, PHOTOGRAPHY

Opening Reception: Saturday, June 5, 2010, 5:00 p.m.

Exhibit remains through June 30

The Dolphin Gallery presents the landscape photography of Scott Chieffo and the innovative ceramics of Kazuko Matthews from June 5 through June 30. Come and meet the artists at the opening reception on Saturday, June 5 from 5:00 to 7:00 p.m.

### About Kazuko Matthews

My work as a clay artist has evolved over 30+ years. Starting out as a functional potter, my desire for ever-widening range drew me into exploration of diverse forms and searches for innovative expression. Today I work mostly with slabform construction to create my ceramic sculptures.



I attended Mount San Antonio College and Chouinard Art Institute, studying with Otto and Vivika Heino and continued my education at Santa Monica College and Scripps College studying with Paul Soldner. I have exhibited extensively throughout the

United States and in Japan, including the Los Angeles County Museum, the Renwick Gallery of Smithsonian in Washington, D.C. and Striped House Museum, Tokyo.

My Japanese heritage and sensitivity provide important foundation for my work. Today, having lived in the United States for more than half my life, there is a broader fusion of the two cultures within my personal life. And as an artist, America, with her vast space and carefree atmosphere, has given me the sense of unbound freedom to explore and create.

### About Scott Chieffo

In the six years that he has been living on the Mendocino Coast, Scott Chieffo has developed an intimate photographic relationship with its unique landscape. His images capture the subtle beauty of the coast with a highly unique, "painterly" style.



Scott explains, "Photography is the ultimate means of getting in touch with myself, and the world around me. Through the camera's viewfinder, I am able to see the beauty of the natural world with a unique intimacy."

"I believe that a fine art photographic image is most powerful if it can be viewed with increasing pleasure over and over again for many years, rather than simply have a strong initial impact. When things are going well, I literally enter a meditative state of mind, which allows me to create images that communicate the subtle emotions aroused by the scene surrounding me."

Scott was born and raised in Southern California, and has lived most of his adult life in various Northern California locations. His degree in Environmental Biology sparked a strong interest in the natural world that has continually grown throughout his life.

## DIETARY FATS AND THE BRAIN

WITH DAVID KYLE

Monday, June 7, 2010

7:00 p.m.

Admission is \$5

The story that David Kyle will relate in his June 7 talk at 7:00 p.m., entitled "Dietary Fats and the Brain," may sound like a tale from Star Trek science-fiction, but it is actually an even more fantastic story that began in a NASA laboratory, spawned a successful biotech company and now offers a healthier life for more than 33 million babies worldwide.

In the early 1980s NASA was experimenting with the use of micro-algae as a renewable source of food and oxygen on long duration interplanetary missions. After the completion of that program, a group of scientists formed what later became Martek Biosciences, a leader in micro-algae research and development.

Dr. Kyle discovered an algae which produces high levels of the omega-3 fatty acid DHA. DHA is a building block of the brain and is naturally delivered from a mother to her baby through her breast milk. However, none of the available infant formulae in the 1990s contained this important ingredient.

Martek developed a DHA-oil supplement that is now universally added to infant formulae worldwide. Dr. Kyle's story relates not only the development of this process, but also the battles with the infant formula companies to provide a better product that is critically important for optimal brain development, particularly in low birth weight and premature infants.



Many know omega-3 fatty acid is beneficial to the heart, but it is also critical for infant development, for healthy brains, for both eye development and function, and for proper development of the nervous system. It even has potential to lower risk of diseases including Alzheimer's.

David Kyle, who was inducted in early 2009 into The Space Technology Hall of Fame for his

work in this area, is well suited to explain how this story unfolded, the science behind DHA, and what future potential it holds for everyone from infants to mothers to seniors.



---

## WHEN MAGICIANS GAVE AWAY THEIR SECRETS

WITH MARTY COVINGTON

Monday, June 14, 2010

7:00 p.m.

Admission is \$5

disclose the trick behind an alleged deception. But, twice in the history of magic, once in 1660-1668 and once again during the 1920s and '30s, magicians broke their vows, some quite willingly and others out of desperation.

Marty will delve into the story behind these two experiences and will explain when and why magicians break their vows of silence. He will also explain several of the famous tricks that magicians have given away. For an encore he will teach the audience how to perform these tricks.

The speaker has a distinguished academic career. He holds the Berkeley Presidential Chair in

Like one of his tricks, Marty Covington magically reappears for the charmed third time on June 14, 7:00 p.m. to discuss the topic of magic, a fitting avocation for this UC Berkeley Psychology professor. This time Marty will draw back the curtain and reveal the secrets behind the tricks in his talk "When Magicians Gave Away Their Secrets."

Supposedly magicians take a sacred oath not to reveal how their amazing feats are performed and not to



# FALKLAND ISLANDS, SOUTH GEORGIA ISLAND AND ANTARCTICA

WITH SIEGFRIED MATULL

Monday, June 28, 2010  
7:00 p.m.  
Admission is \$5

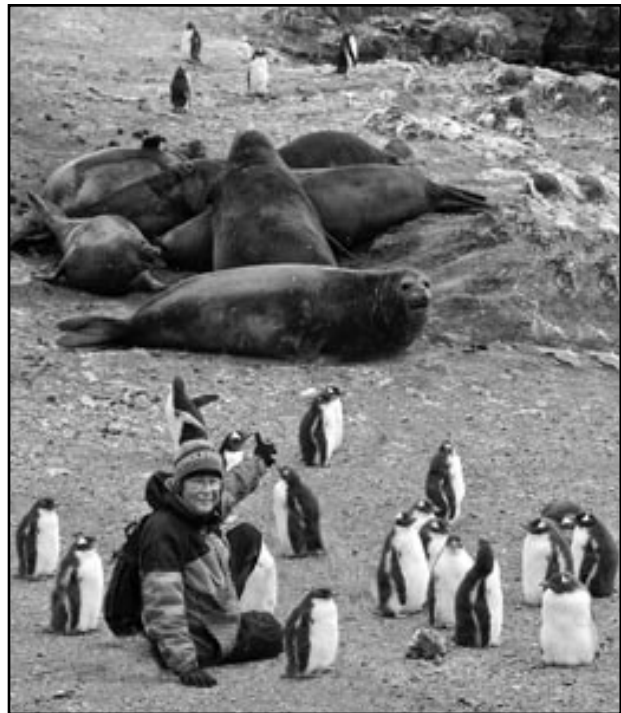
Returning for his third talk in four years on June 28, 2010, Siegfried Matull will present photos that reveal the mystery of the Antarctic Peninsula, the Falkland Islands, and South Georgia Island with images that capture the unusual polar light that magically paints scenes in unbelievably diverse hues.

His outstanding photographs capture the world's greatest concentration of diverse wildlife, as well as a variety of giant glaciers and spectacular icebergs.

Siegfried and his wife Gretel were able to study and photograph seven species of penguins - Rockhopper, Macaroni, Magellanic, Adelie, Chinstrap, Gentoo and the beautiful King Penguins. It was an incredible experience when their Zodiac boat landed on a beach, where a giant rookery of about half a million King Penguins live and breed. On another beach landing, they observed and photographed about 200,000 Black-browed Albatrosses.

With this trip, the couple has now visited all seven continents during their worldwide photo travel adventures. For Siegfried and Gretel, Antarctica is unbelievably stunning with wildlife still totally unafraid of the people who visit here! From the small Polar Star ship, they made twenty-six landings and photographed a great variety of birds, whales, dolphins, and seals, including close-up shots of the giant and vicious Leopard Seals.

An extremely skilled photographer with an eye for the unusual, Matull has been a frequent lecturer at photography conferences and has judged many



national and international photo salons including the prestigious Austrian Supercircuit in Linz, Austria. He has received 102 gold medals and has achieved first place awards in the Photographic Society of America's annual contests in both Nature and Photojournalism categories.

The couple is anxious to share in their phototalk what Siegfried calls by far the most exciting, surprising, and fascinating journey of their entire lives!

Undergraduate Education and is also Senior Research Psychologist at the Institute for Personality and Social Psychology. He is past president of the International Society for Test Anxiety Research. Covington has authored eight books and numerous research articles and papers. He has also been a recipient of the Berkeley Distinguished Teaching Award and the Phi Beta Kappa Award for Outstanding University

Instructor of the Year. Living on Sea Ranch since 1976 with his wife Bette, Covington has taught continuously for the past 49 years at Cal.

Be sure to come and bring the family. Don't be caught off guard and watch carefully because you can be sure that Marty has a couple of surprises up his sleeve he is not revealing beforehand.

# Summer Art Program for Youth

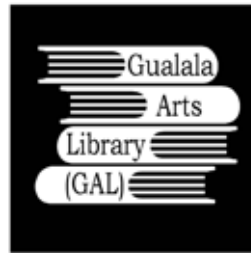


**Ages 5 through 13**

Tuesday through Friday, July 6 - 9, 2010  
 Tuesday through Friday, July 13 - 16, 2010  
 9:30 a.m. - 12:30 p.m.

Arts & Crafts, Ceramics, Environmental Art,  
 Performance Art, and Culinary Art!

**For more details, see [GualalaArts.org](http://GualalaArts.org)  
 or call 707-884-1138**



## LETTERS FROM THE LIBRARY

We received another generous donation to the library. Our thanks go to Holly Agliolo of Gualala Sea Spa, for donating over 200 watercolor and other art books from the extensive collection of her mother and artist, Marjorie Hollingworth.

We also want to welcome Monica Zarlowski to the library team. She will be taking over from Anna Hines, as the representative for the Pacific Piecemakers Quilt Guild (PPQG). PPQG is an active supporter and user of our library, and we appreciate all the work they do to make our quilting section first rate!

And thanks to all the members who stopped by in May and selected one or more books from our free books "sale"! Your donations will help cover the costs of keeping the library open and up-to-date.



## WATERING CREW

While this year's rains have been more than ample, we do anticipate a need for a hand irrigation crew this summer.

It will involve one day a month — if we get 10+ volunteers. Call Art Dreyer at 707-785-3580 for more information and to sign up.



✿ Articles for July's Sketches are due Friday, May 28, 2010.

## BOARD OF DIRECTORS

**Michele Marshall**, President  
**Helen Klembeck**, 1st Vice President  
**Don Krieger**, 2nd Vice President  
**Martha Wohlken**, Secretary  
**Bruce Jones**, Treasurer  
  
**David 'Sus' Susalla**, Executive Director


**Board Members:** Phil Atkins, David Bower, Betsi Carey, Steve Carnes, Barbara Duns Moor, Russell Hardy, Nancy Kyle, Mike Mee, Gerda Randolph, Bill Retzer, Susan Sandoval, Rich Schimbor

Promoting public interest and participation in the arts since 1961.



## SKETCHES

**Editor:** Gualala Arts Staff  
**Art Director:** P.T. Nunn  
**Workshop Catalog:** Barbara Pratt  
**Copy Editor:** Dave Jordan  
**Mailing Staff:** Bev Sloane, Suzanne Hansen, Joyce Omer, Don Omer, Sharon Jones, Ginger Alexander, Bobbie Penney, Diane Cunningham, Marilyn Balch, Trudy Armer, Linda Frye, Helen Kembeck, Sharon Nickodem, Sonja Thiene, and Colleen Jackman

 Sketches is printed on 100% recycled paper out of concern for the planet. Taking care of trees is a part of our job.

Copyright © 2010 Gualala Arts, Inc.

# Interest Groups

Groups meet at Gualala Arts Center unless indicated.  
Details are on the website [GualalaArts.org/Groups](http://GualalaArts.org/Groups) or contact the people listed.

## **Basket Makers**

2nd Thursdays, 10:00 a.m. - 1:00 p.m.  
Gerda Randolph, 785-2206

## **Beads n' Beyond**

3rd Saturday, 1:00 p.m. - 3:00 p.m.  
Suzanne Hansen, 785-9302

## **Chamber Music Series Committee**

1st Wednesday at 1:00 p.m.  
Joan Jordan, 785-2549

## **Coastal Singers**

Days and Times to be announced.  
Steve McLaughlin, 884-3722

## **Collage**

2nd Monday of the month, 1:30 p.m. - 3:30 p.m. upstairs.  
Contact: Sharon Nickodem  
sharonnickodem@aol.com

## **Culinary Arts Guild**

Ben Klagenberg, 785-3530

## **Dinner At Six Fundraiser for Gualala Arts Kitchen**

Ben Klagenberg, 785-3530

## **Fiber Arts Group**

1st Thursdays, 10:00 a.m. - noon  
Jennie Henderson, 882-2270

## **Gualala Arts Book Club**

Info Alice Combs 884-3741 

The selection for June:  
"The Book Thief" by Markus Zusak.

**Gualala Arts Library** in the  
Mohr Mezzanine  
Sharon Nickodem, 884-9611

## **Kitchen Cabinet**

Manages the Gualala Arts Center kitchen; group needs volunteers.  
Wilma Klagenberg, 785-3530

## **Landscape Group**

Tuesdays, 9:00 p.m. - noon  
Art Dreyer, 785-3580

## **Life Drawing**

Wednesdays, 2:30 pm -5:30 p.m.  
Upstairs. Model's fee shared by attendees (usually \$8 to \$10). Models needed, \$20 Hour. Mike Mee at 785-3999

## **North Coast Artists' Guild**

(NCAG) Walt Rush, 882-2441  
info@northcoastartistsguild.com

## **North Coast Photographers**

**Group** (NCPG) Wildlife photography:  
1st Sundays, 1:00 p.m.  
Craig Tooley, theruffians1@mac.com

## **Pacific Piecemakers Quilt Guild**

3rd Friday monthly at 12:30 p.m.  
Jan Carter 785-1966


## **Piano Group**

2nd Monday of every month at 1:00 p.m.  
Adelle Platt at 785-9506. 

## **Poetry and Short Prose**

Meets monthly  
Frank Healy, 884-3728

## **Readers Theater**

1st Tuesdays; June 1, 7:00 p.m.   
*The Young Man From Atlanta* by Horton Foote  
Listeners are always welcome.  
Jane Simmonds 886-5148

## **Talking About Art**

New Group forming!  
Contact Larry Riddle 882-2774 or  
lriddle@ucsd.edu

## **The Woodcarving Group**

2nd Thursday of the month  
Thursdays, 2:00 p.m. - 4:00 p.m.  
Woodworkers contact  
Jim Tackett, 785-1024

## **GUALALA ARTS IS ON FACEBOOK!**

See photos of recent events and friends, family and maybe yourself.

Saturday, July 31, 2010, 10-3pm  
**Gualala Arts Garden Guild**

presents,

## *A Ladies Garden Luncheon*

Luncheon will be served at noon in Sandy Scott's Frog Song Gardens summer pavilion overlooking the lake. Flower arranging demonstrations by Marcia Heckman to follow. Best of Show Chapeau award. Self guided tour of gardens follows lunch.

Before July 17 - \$28 per ticket:  
After July 17 - \$5 more per ticket  
(if available)

Check with Gualala Arts for a special ticket for tables of 8 for \$200.

## **Open Clay Studio**

The clay studio offers a drop-in Open Studio facility for local artists and visitors, where they can learn how to make and decorate hand-built pottery items.

The Studio is open  
Monday - Friday,  
10:00 a.m. - 4:00 p.m.

There is an instructor on site during all open studio hours.



indicates updated info

## CALENDAR OF EVENTS IN JUNE

Saturday	5-	Exhibit	Opening Reception - Dolphin: Scott Chieffo & Kazuko Matthews
Monday	7	Lecture	Dietary Fats and the Brain
Saturday	12-	Exhibit	Opening Reception - Bay Area Basket Makers
Monday	14	Lecture	When Magicians Gave Away Their Secrets
Saturday	26	Concert	Terry Riley's 75th Birthday Bash
Monday	28	Lecture	Falklands, South Georgia Island & Antarctica

---

## UPCOMING EVENTS IN JULY

Saturday	3-	Exhibit	Opening Reception - Dolphin: Madeline Kibbe & Ling-Yen Jones
Tuesday	6-16	Youth	Summer Art Program for Youth
Saturday	10-	Exhibit	Sid Waterman Classic Auto and Art Show
Saturday	10-11	Concert	Summer Chamber Music Weekend: Roy Bogas & Friends
Saturday	17	Exhibit	Gualala Arts Auto Show
Fri-Sun	23-25	Theater	Our Town
Fri-Sun	30-8/1	Theater	Our Town
Saturday	31	Luncheon	Garden Guild: "A Ladies Garden Luncheon"

Gualala Arts Center is open 9:00 a.m. - 4:00 p.m. weekdays, 12:00 noon - 4:00 p.m. weekends



46501 Gualala Road  
P.O. Box 244  
Gualala, Ca 95445

707.884.1138  
info@GualalaArts.org  
www.GualalaArts.org

U.S. Post Paid  
Nonprofit Org.  
Permit #1  
Gualala, CA  
95445