



SONOMA 8

Opening Reception: Saturday
April 10, 2010 at 5:00 p.m.
Exhibit remains through May 2, 2010

The Sonoma 8 will present an exhibit at Gualala Arts Center from the opening Saturday, April 10, 5:00 to 7:00 p.m. through May 2, 2010 in the Burnett Gallery.

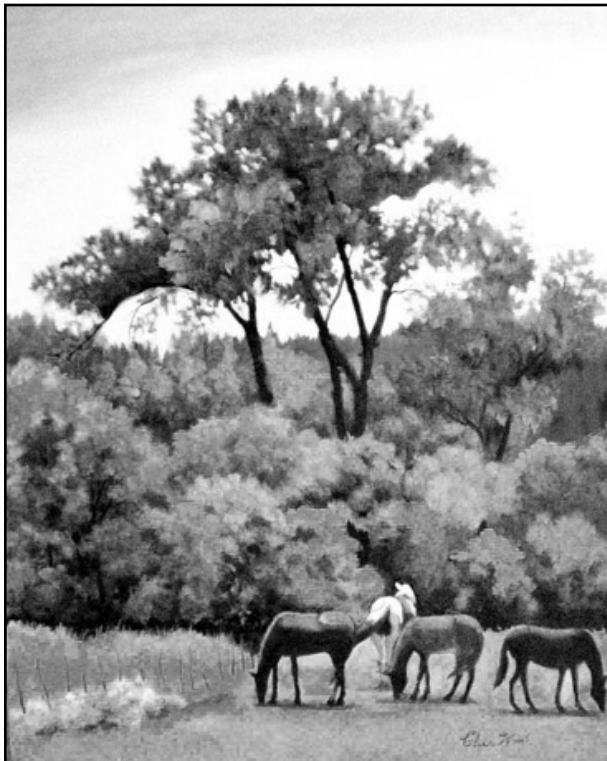


In 2007, eight Sonoma County artists found that they all had a similar goal: to rediscover their emotional connection with the Sonoma landscape and to vividly capture this landscape through form, light and color. Plein air painting is one of the key elements used by the members to capture the stunning landscape and seacoast of Northern California. Exploration of styles and pushing the boundaries of

representational art is also encouraged to produce creative and emotionally moving works. The group urges each artist to follow their own muse and not conform to a group style of painting.

The members are Joyce Delario, Pat Spiz and Andrea Way of Petaluma, Mariel Green and Char Wood of Santa Rosa, and Kath Root, Chris Stover and Henry Violin of Sebastopol. The artists work in various media including oils, watercolor, pastel and acrylics. The group occasionally exhibits together in Sonoma County venues.

For more about the Sonoma 8 group, visit sonoma8.com.



SHOWING AT THE SEA RANCH LODGE FRONT GALLERY

ANITA KAPLAN ART QUILTS

MATT PRESLEY WOOD